

HOTĂRÂREA NR. _____

privind modificarea Hotărârii Consiliului Local al Municipiului Craiova nr.253/2022 referitoare la aprobarea organigramei și statului de funcții ale Spitalului Clinic de Boli Infecțioase și Pneumoftiziologie „Victor Babeș” Craiova

Consiliul Local al Municipiului Craiova întrunit în ședința ordinară din data de 25.08.2022;

Având în vedere referatul de aprobare nr.147754/2022, raportul nr.147755/2022 întocmit de Serviciul Resurse Umane și raportul de avizare nr.147888/2022 întocmit de Direcția Juridică, Asistență de Specialitate și Contencios Administrativ prin care se propune modificarea Hotărârii Consiliului Local al Municipiului Craiova nr.253/2022 referitoare la aprobarea organigramei și statului de funcții ale Spitalului Clinic de Boli Infecțioase și Pneumoftiziologie „Victor Babeș” Craiova;

În conformitate cu prevederile Ordonanței de Urgență nr.57/2019 privind Codul Administrativ, cu modificările și completările ulterioare, Legii nr.95/2006, republicată, privind reforma în domeniul sănătății, cu modificările și completările ulterioare, Legii nr.53/2003, republicată – Codul Muncii, cu modificările și completările ulterioare, Ordinului nr.1312/250/2020 privind organizarea și funcționarea structurii de management al calității serviciilor de sănătate în cadrul unităților sanitare cu paturi și serviciilor de ambulanță, în procesul de implementare a sistemului de management al calității serviciilor de sănătate și siguranței pacientului, Ordinului nr.75/2019 pentru aprobarea Criteriilor de performanță privind constituirea, încadrarea și dotarea serviciilor voluntare și a serviciilor private pentru situații de urgență, cu modificările și completările ulterioare și Ordinului nr.1224/2010 privind aprobarea normativelor de personal pentru asistența medicală spitalicească, precum și pentru modificarea și completarea Ordinului ministrului sănătății publice nr.1778/2006 privind aprobarea normativelor de personal, cu modificările și completările ulterioare;

În temeiul art.129 alin.2 lit.a, coroborat cu alin.3 lit.c, art.139 alin.3 lit.h, art.154 alin.1 și art.196 alin.1 lit.a din Ordonanța de Urgență a Guvernului nr.57/2019 privind Codul administrativ, cu modificările și completările ulterioare;

HOTĂRĂȘTE:

- Art.1.** Se aprobă modificarea Hotărârii Consiliului Local al Municipiului Craiova nr.253/2022 referitoare la aprobarea organigramei și statului de funcții ale Spitalului Clinic de Boli Infecțioase și Pneumoftiziologie „Victor Babeș” Craiova, conform anexelor nr.1 și 2 care fac parte integrantă din prezenta hotărâre.
- Art.2.** Pe data prezentei hotărâri, își încetează efectele Hotărârea Consiliului Local al Municipiului Craiova nr.326/2022.

Art.3. Primarul Municipiului Craiova, prin aparatul de specialitate: Serviciul Administrație Publică Locală, Serviciul Resurse Umane și Spitalul Clinic de Boli Infecțioase și Pneumoftiziologie „Victor Babeș” Craiova vor aduce la îndeplinire prevederile prezentei hotărâri.

**INIȚIATOR,
PRIMAR,
Lia-Olguța VASILESCU**

**AVIZAT,
SECRETAR GENERAL,
Nicoleta MIULESCU**

REFERAT DE APROBARE
A PROIECTULUI DE HOTARÂRE PRIVIND MODIFICAREA H.C.L. NR. 253/2022,
REFERITOARE LA APROBAREA ORGANIGramei ȘI STATULUI DE FUNCȚII ALE
SPITALULUI CLINIC DE BOLI INFECȚIOASE ȘI PNEUMOFIZIOLOGIE „VICTOR
BABEȘ” CRAIOVA

Având în vedere:

- adresa Spitalului Clinic de Boli Infecțioase și Pneumoftiziologie „Victor Babeș” Craiova nr. 11899/19.08.2022, înregistrată la autoritatea locală sub nr. 138/22.08.2022;
- avizul Ministerul Sănătății privind modificarea structurii organizatorice a Spitalului Clinic de Boli Infecțioase și Pneumoftiziologie „Victor Babeș” Craiova;
- prevederile Legii nr. 95/2006, republicată, privind reforma în domeniul sănătății, cu modificările și completările ulterioare;
- prevederile Ordonanței de Urgență nr. 162/2008, privind transferul ansamblului de atribuții și competențe exercitate de Ministerul Sănătății Publice către autoritățile administrației publice locale, cu modificările și completările ulterioare;
- prevederile Ordinului nr. 1224/2010 privind aprobarea normativelor de personal pentru asistența medicală spitalicească, precum și pentru modificarea și completarea Ordinului ministrului sănătății publice nr. 1.778/2006 privind aprobarea normativelor de personal, cu modificările și completările ulterioare;
- prevederile Ordinului nr. 1312/250/2020 privind organizarea și funcționarea structurii de management al calității serviciilor de sănătate în cadrul unităților sanitare cu paturi și serviciilor de ambulanță, în procesul de implementare a sistemului de management al calității serviciilor de sănătate și siguranței pacientului;
- prevederile Ordinului nr. 75/2019 pentru aprobarea Criteriilor de performanță privind constituirea, încadrarea și dotarea serviciilor voluntare și a serviciilor private pentru situații de urgență, cu modificările și completările ulterioare;
- prevederile Ordonanței de Urgență nr. 57/2019, privind Codul administrativ, cu modificările și completările ulterioare;

propunem promovarea proiectului de hotarâre privind:

- modificarea H.C.L. nr. 253/2022, referitoare la aprobarea organigramei și statului de funcții ale Spitalului Clinic de Boli Infecțioase și Pneumoftiziologie „Victor Babeș” Craiova și, pe cale de consecință, încetarea efectelor Hotărârii Consiliului Local al municipiului Craiova nr.326/2022.

PRIMAR,
LIA –OLGUȚA VASILESCU

ÎNTOCMIT:
CAMELIA-NICOLETA FLOREA
Îmi asum responsabilitatea privind
fundamentarea, realitatea și legalitatea
întocmirii acestui act oficial
Data:22.08.2022
Semnătura: _____

RAPORT

privind modificarea Hotărârii Consiliului Local al municipiului Craiova nr. 253/2022, referitoare la aprobarea organigramei și statului de funcții ale Spitalului Clinic de Boli Infecțioase și Pneumoftiziologie „Victor Babeș” Craiova

În conformitate cu prevederile Ordonanței de Urgență a Guvernului României nr. 162/2008 pentru modificarea unor acte normative din domeniul sănătății în vederea descentralizării, a fost transferat ansamblul de atribuții și competențe ale Ministerului Sănătății Publice către autoritățile administrației publice locale, concomitent cu asigurarea resurselor umane, materiale și financiare necesare exercitării acestora.

Prin Hotărârea Guvernului României nr. 529/2010 pentru modificarea și completarea unor acte normative din domeniul sănătății a fost aprobată lista unităților sanitare publice cu paturi pentru care s-a transferat managementul asistenței medicale către autoritățile administrației publice locale, la pozițiile 148-150 din această listă regăsindu-se Spitalul Clinic Municipal „Filantropia” Craiova, Spitalul Clinic de Boli Infecțioase și Pneumoftiziologie „Victor Babeș” Craiova și Spitalul Clinic de Neuropsihiatrie Craiova.

În Monitorul Oficial nr. 658/2010 a fost publicat Ordinul nr. 1224/2010 privind aprobarea normativelor de personal pentru asistența medicală spitalicească, precum și pentru modificarea și completarea Ordinului ministrului sănătății publice nr. 1.778/2006 privind aprobarea normativelor de personal.

Potrivit art. 6 din actul normativ menționat, numărul de posturi, pe categorii de personal, între limita minimă și maximă, se stabilește de managerul fiecărei unități sanitare cu personalitate juridică, potrivit structurilor medicale aprobate, cu încadrarea în cheltuielile de personal aprobate ca limită maximă prin bugetul anual de venituri și cheltuieli.

Prin Hotărârea Consiliului Local al municipiului Craiova nr. 253/2022, modificată prin Hotărârea Consiliului Local al municipiului Craiova nr. 326/2022, au fost aprobate organigrama și statul de funcții ale Spitalului Clinic de Boli Infecțioase și Pneumoftiziologie „Victor Babeș” Craiova, pentru un număr de 541 posturi.

Prin adresa nr.11899/19.08.2022, înregistrată la autoritatea locală sub nr.138/22.08..2022, Spitalul Clinic de Boli Infecțioase și Pneumoftiziologie „Victor Babeș” Craiova a solicitat modificarea organigramei și statului de funcții aprobate, după cum urmează:

-se înființează un post vacant de medic primar, specialitatea pneumologie, prin transformarea postului vacant de asistent medical principal, poziția nr. 251 din statul de funcții aprobat;

-postul vacant de infirmieră, poziția nr. 119 din statul de funcții aprobat, Clinica Boli Infecțioase Adulți II, se transformă în portar și se mută în cadrul Compartimentului Deservire;

-postul vacant de asistent medical, Clinica Pneumologie II, poziția nr. 253 din statul de funcții aprobat, se transformă în medic specialist și se mută în cadrul Laboratorului de analize medicale – Compartiment BK;

-postul vacant de farmacist primar, poziția nr. 419 din statul de funcții aprobat, se transformă

în farmacist.

De asemenea, statul de funcții cuprinde posturile vacante prin pensionare, cele care au fost ocupate prin concursuri, transferuri, mutări între compartimentele funcționale, precum și modificările de funcții urmare promovărilor în grade și trepte profesionale.

În conformitate cu prevederile art. 129 alin. 2 lit. "a" și alin. 3 lit. "c" din Ordonanța de Urgență nr. 57/2019 privind Codul administrativ, cu modificările și completările ulterioare, Consiliul Local exercită atribuții privind unitatea administrativ-teritorială, organizarea proprie, precum și organizarea și funcționarea aparatului de specialitate al primarului, ale instituțiilor publice de interes local și ale societăților și regiilor autonome de interes local. În exercitarea acestor atribuții, Consiliul Local aprobă, în condițiile legii, la propunerea primarului, înființarea, organizarea și statul de funcții ale aparatului de specialitate al primarului, ale instituțiilor publice de interes local, reorganizarea și statul de funcții ale regiilor autonome de interes local, precum și înființarea, reorganizarea sau desființarea de societăți de interes local și statul de funcții al acestora.

Având în vedere cele prezentate, propunem Consiliului Local al municipiului Craiova, în conformitate cu prevederile Ordonanței de Urgență nr. 57/2019 privind Codul Administrativ, cu modificările și completările ulterioare, Legii nr. 95/2006, republicată, privind reforma în domeniul sănătății, cu modificările și completările ulterioare, Legii nr. 53/2003, republicată – Codul Muncii, cu modificările și completările ulterioare, Ordinului nr. 1312/250/2020 privind organizarea și funcționarea structurii de management al calității serviciilor de sănătate în cadrul unităților sanitare cu paturi și serviciilor de ambulanță, în procesul de implementare a sistemului de management al calității serviciilor de sănătate și siguranței pacientului, Ordinului nr. 75/2019 pentru aprobarea Criteriilor de performanță privind constituirea, încadrarea și dotarea serviciilor voluntare și a serviciilor private pentru situații de urgență, cu modificările și completările ulterioare și Ordinului nr. 1224/2010 privind aprobarea normativelor de personal pentru asistența medicală spitalicească, precum și pentru modificarea și completarea Ordinului ministrului sănătății publice nr. 1.778/2006 privind aprobarea normativelor de personal, cu modificările și completările ulterioare, modificarea Hotărârii Consiliului Local al municipiului Craiova nr. 253/2022, referitoare la aprobarea organigramei și statului de funcții ale Spitalului Clinic de Boli Infecțioase și Pneumoftiziologie „Victor Babeș” Craiova, conform anexelor 1 și 2 la prezentul raport și, pe cale de consecință, încetarea efectelor Hotărârii Consiliului Local al municipiului Craiova nr.326/2022.

ȘEF SERVICIU,

CAMELIA NICOLETA FLOREA

Îmi asum responsabilitatea privind realitatea și legalitatea în solidar cu întocmitorul înscrisului

Data:22.08.2022

Semnătura:

Întocmit,

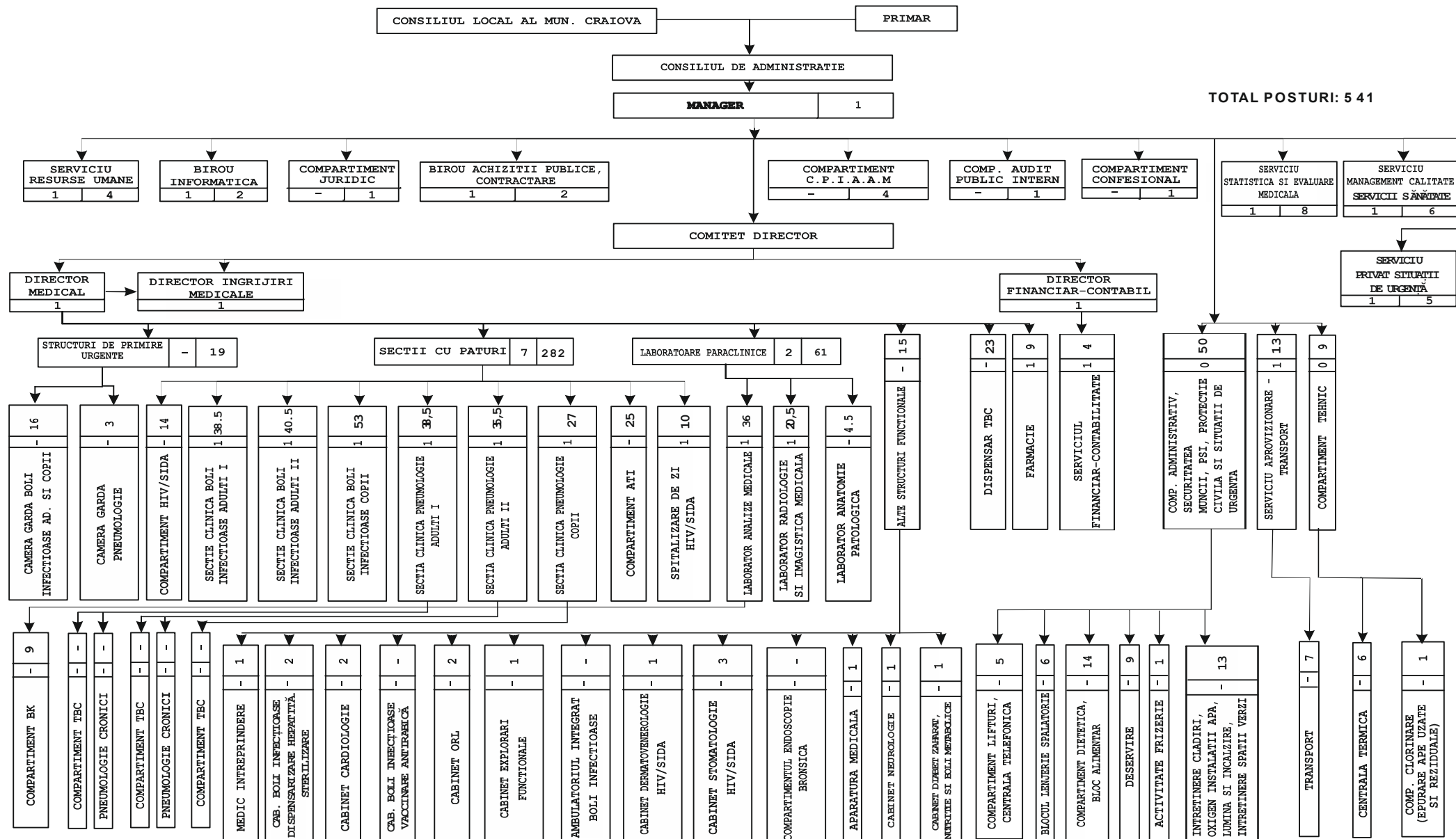
Cons. GEORGETA-VIORICA GLIGORIJEVIĆ

Îmi asum responsabilitatea pentru fundamentarea, realitatea și legalitatea întocmirii acestui act oficial

Data:22.08.2022

Semnătura:

ORGANIGRAMA SPITALULUI CLINIC DE BOLI INFECȚIOASE ȘI PNEUMFTIZIOLOGIE „VICTOR BABEȘ“ CRAIOVA PENTRU ANUL 2022



STATUL DE FUNCTII
VALABIL CU DATA DE 01.09.2022

Nr. Crt.	FUNCTIA,GRAD SAU TREAPTA	Nivel studii	Cuquantum post	Grad sau Treapta	Numar posturi aprobate	Numar posturi ocupate	Numar posturi vacante
CONDUCEREA SPITALULUI							
1,0	MANAGER	S	1,0	II	1,0	1,0	0,0
2,0	DIRECTOR MEDICAL	S	1,0	II	1,0	0,0	1,0
3,0	DIRECTOR FIN.CONTABIL	S	1,0	II	1,0	0,0	1,0
4,0	DIRECTOR INGRIJIRI MEDICALE	S	1,0	II	1,0	1,0	0,0
TOTAL CONDUCERE			4,0		4,0	2,0	2,0
COMPARTIMENT PREVENIRE INFECTII ASOCIATE ASISTENTEI MEDICALE							
5,0	MEDIC	S	1,0	PRIMAR	1,0	1,0	0,0
TOTAL PERSONAL SANITAR			1,0		1,0	1,0	0,0
6,0	ASISTENT MEDICAL	PL	1,0	PRINCIPAL	1,0	1,0	0,0
7,0	ASISTENT MEDICAL	PL	1,0	PRINCIPAL	1,0	1,0	0,0
TOTAL PERSONAL MEDIU			2,0		2,0	2,0	0,0
8,0	AGEN DDD	M	1,0		1,0	1,0	0,0
TOTAL PERSONAL AUXILIAR			1,0		1,0	1,0	0,0
CAMERA DE GARDA BOLI INFECTIOASE							
9,0	ASISTENT MEDICAL	PL	1,0	PRINCIPAL	1,0	1,0	0,0
10,0	ASISTENT MEDICAL	S	1,0	PRINCIPAL	1,0	1,0	0,0
11,0	ASISTENT MEDICAL	S	1,0	PRINCIPAL	1,0	1,0	0,0
12,0	ASISTENT MEDICAL	PL	1,0	PRINCIPAL	1,0	1,0	0,0
13,0	ASISTENT MEDICAL	S	1,0	PRINCIPAL	1,0	1,0	0,0
14,0	ASISTENT MEDICAL	S	1,0	PRINCIPAL	1,0	1,0	0,0
15,0	ASISTENT MEDICAL	PL	1,0	PRINCIPAL	1,0	1,0	0,0
16,0	ASISTENT MEDICAL	S	1,0	PRINCIPAL	1,0	1,0	0,0
17,0	ASISTENT MEDICAL	PL	1,0	PRINCIPAL	1,0	0,0	1,0
TOTAL ASISTENTE 3 TURE CAMERA DE GARDA			9,0		9,0	8,0	1,0
18,0	INFIRMIERA	M	1,0		1,0	1,0	0,0
19,0	INFIRMIERA	M	1,0		1,0	1,0	0,0
20,0	INFIRMIERA	M	1,0		1,0	1,0	0,0
21,0	INFIRMIERA	M	1,0		1,0	1,0	0,0
22,0	INFIRMIERA	G	1,0		1,0	0,0	1,0
TOTAL INFIRMIERE CAMERA DE GARDA			5,0		5,0	4,0	1,0
23,0	INGRIJITOARE	G	1,0		1,0	1,0	0,0
24,0	INGRIJITOARE	G	1,0		1,0	1,0	0,0
TOTAL INGRIJITOARE CAMERA DE GARDA			2,0		2,0	2,0	0,0
CAMERA GARDA PNEUMOLOGIE							
25,0	ASISTENT MEDICAL	PL	1,0	PRINCIPAL	1,0	1,0	0,0
26,0	ASISTENT MEDICAL	PL	1,0	PRINCIPAL	1,0	1,0	0,0
27,0	ASISTENT MEDICAL	PL	1,0	GENERALIST	1,0	0,0	1,0
TOTAL PERS.SANITAR MEDIU			3,0		3,0	2,0	1,0
SECTIA CLINICA DE BOLI INFECTIOASE ADULTI I - 65PATURI							
28,0	MEDIC SEF SECTIE	S	1,0	II	1,0	0,0	1,0
29,0	MEDIC	S	1,0	PRIMAR	1,0	1,0	0,0
30,0	MEDIC	S	1,0	SPECIALIST	1,0	1,0	0,0
30,5	MEDIC - As. Univ.	S	0,5	PRIMAR	0,5	0,5	0,0
31,5	MEDIC	S	1,0	PRIMAR	1,0	1,0	0,0
32,5	MEDIC	S	1,0	PRIMAR	1,0	1,0	0,0
TOTAL MEDICI			5,5		5,5	4,5	1,0
33,5	ASISTENT MEDICAL SEF	S	1,0	PRINCIPAL	1,0	1,0	0,0
34,5	ASISTENT MEDICAL	PL	1,0	PRINCIPAL	1,0	1,0	0,0
35,5	ASISTENT MEDICAL	PL	1,0	PRINCIPAL	1,0	1,0	0,0
36,5	ASISTENT MEDICAL	S	1,0	PRINCIPAL	1,0	1,0	0,0
37,5	ASISTENT MEDICAL	PL	1,0	PRINCIPAL	1,0	1,0	0,0
38,5	ASISTENT MEDICAL	S	1,0	PRINCIPAL	1,0	0,0	1,0
39,5	ASISTENT MEDICAL	S	1,0	PRINCIPAL	1,0	1,0	0,0
40,5	ASISTENT MEDICAL	PL	1,0	PRINCIPAL	1,0	1,0	0,0
41,5	ASISTENT MEDICAL	PL	1,0	PRINCIPAL	1,0	1,0	0,0
42,5	ASISTENT MEDICAL	PL	1,0	PRINCIPAL	1,0	1,0	0,0
43,5	ASISTENT MEDICAL	S	1,0	PRINCIPAL	1,0	1,0	0,0
44,5	ASISTENT MEDICAL	PL	1,0	PRINCIPAL	1,0	1,0	0,0
45,5	ASISTENT MEDICAL	S	1,0	GENERALIST	1,0	0,0	1,0
46,5	ASISTENT MEDICAL	S	1,0	PRINCIPAL	1,0	1,0	0,0
47,5	ASISTENT MEDICAL	PL	1,0	PRINCIPAL	1,0	1,0	0,0
48,5	ASISTENT MEDICAL	PL	1,0	PRINCIPAL	1,0	1,0	0,0
49,5	ASISTENT MEDICAL	PL	1,0	PRINCIPAL	1,0	1,0	0,0
50,5	ASISTENT MEDICAL	PL	1,0	PRINCIPAL	1,0	1,0	0,0

Nr. Crt.	FUNCTIA,GRAD SAU TREAPTA	Nivel studii	Cuquantum post	Grad sau Treapta	Numar posturi aprobate	Numar posturi ocupate	Numar posturi vacante
51,5	ASISTENT MEDICAL	PL	1,0	PRINCIPAL	1,0	1,0	0,0
TOTAL PERS.MEDIU TREI TURE			19,0		19,0	17,0	2,0
52,5	REGISTRATOR MEDICAL	M	1,0	DEBUTANT	1,0	0,0	1,0
TOTAL PERS.MEDIU POST FIX			1,0		1,0	0,0	1,0
53,5	INFIRMIERA	G	1,0		1,0	1,0	0,0
54,5	INFIRMIERA	G	1,0		1,0	1,0	0,0
55,5	INFIRMIERA	M	1,0		1,0	1,0	0,0
56,5	INFIRMIERA	G	1,0		1,0	0,0	1,0
57,5	INFIRMIERA	G	1,0		1,0	1,0	0,0
58,5	INFIRMIERA	G	1,0		1,0	1,0	0,0
59,5	INFIRMIERA	G	1,0		1,0	1,0	0,0
60,5	INFIRMIERA	M	1,0		1,0	1,0	0,0
61,5	INFIRMIERA	G	1,0		1,0	1,0	0,0
62,5	INFIRMIERA	G	1,0		1,0	1,0	0,0
63,5	INFIRMIERA	M	1,0		1,0	1,0	0,0
64,5	INFIRMIERA	M	1,0		1,0	1,0	0,0
65,5	INFIRMIERA	M	1,0		1,0	1,0	0,0
TOTAL INFIRMIERE			13,0		13,0	12,0	1,0
66,5	INGRIJITOARE	G	1,0		1,0	1,0	0,0
TOTAL INGRIJITOARE			1,0		1,0	1,0	0,0
COMPARTIMENT HIV/SIDA 15 PATURI							
67,5	MEDIC	S	1,0	SPECIALIST	1,0	1,0	0,0
TOTAL MEDICI			1,0		1,0	1,0	0,0
68,5	ASISTENT MEDICAL	S	1,0	PRINCIPAL	1,0	1,0	0,0
69,5	ASISTENT MEDICAL	PL	1,0	PRINCIPAL	1,0	1,0	0,0
70,5	ASISTENT MEDICAL	S	1,0	PRINCIPAL	1,0	1,0	0,0
71,5	ASISTENT MEDICAL	S	1,0	PRINCIPAL	1,0	1,0	0,0
72,5	ASISTENT MEDICAL	S	1,0	PRINCIPAL	1,0	1,0	0,0
73,5	ASISTENT MEDICAL	S	1,0	PRINCIPAL	1,0	1,0	0,0
74,5	ASISTENT MEDICAL	S	1,0	PRINCIPAL	1,0	1,0	0,0
TOTAL PERSONAL 3 TURE			7,0		7,0	7,0	0,0
75,5	INFIRMIERA	G	1,0		1,0	1,0	0,0
76,5	INFIRMIERA	G	1,0		1,0	1,0	0,0
77,5	INFIRMIERA	G	1,0		1,0	1,0	0,0
78,5	INFIRMIERA	G	1,0		1,0	1,0	0,0
79,5	INFIRMIERA	G	1,0		1,0	1,0	0,0
80,5	INFIRMIERA	G	1,0		1,0	1,0	0,0
TOTAL INFIRMIERE			6,0		6,0	6,0	0,0
SECTIA CLINICA BOLI INFECTIOASE ADULTI II - 65 PATURI							
81,5	MEDIC SEF SECTIE	S	1,0	II	1,0	1,0	0,0
82,5	MEDIC	S	1,0	SPECIALIST	1,0	1,0	0,0
83,5	MEDIC	S	1,0	PRIMAR	1,0	1,0	0,0
84,5	MEDIC	S	1,0	PRIMAR	1,0	1,0	0,0
85,5	MEDIC	S	1,0	PRIMAR	1,0	1,0	0,0
86,0	MEDIC - Sef lucr.	S	0,5	PRIMAR	0,5	0,5	0,0
TOTAL MEDICI			5,5		5,5	5,5	0,0
87,0	ASISTENT MEDICAL SEF	PL	1,0	PRINCIPAL	1,0	1,0	0,0
88,0	ASISTENT MEDICAL	PL	1,0	PRINCIPAL	1,0	0,0	1,0
89,0	ASISTENT MEDICAL	PL	1,0	PRINCIPAL	1,0	1,0	0,0
90,0	ASISTENT MEDICAL	PL	1,0	PRINCIPAL	1,0	1,0	0,0
91,0	ASISTENT MEDICAL	PL	1,0	PRINCIPAL	1,0	1,0	0,0
92,0	ASISTENT MEDICAL	S	1,0	PRINCIPAL	1,0	1,0	0,0
93,0	ASISTENT MEDICAL	PL	1,0	GENERALIST	1,0	1,0	0,0
94,0	ASISTENT MEDICAL	PL	1,0	PRINCIPAL	1,0	1,0	0,0
95,0	ASISTENT MEDICAL	S	1,0	PRINCIPAL	1,0	1,0	0,0
96,0	ASISTENT MEDICAL	S	1,0	PRINCIPAL	1,0	1,0	0,0
97,0	ASISTENT MEDICAL	S	1,0	GENERALIST	1,0	1,0	0,0
98,0	ASISTENT MEDICAL	S	1,0	PRINCIPAL	1,0	1,0	0,0
99,0	ASISTENT MEDICAL	S	1,0	PRINCIPAL	1,0	1,0	0,0
100,0	ASISTENT MEDICAL	PL	1,0	GENERALIST	1,0	1,0	0,0
101,0	ASISTENT MEDICAL	S	1,0	PRINCIPAL	1,0	1,0	0,0
102,0	ASISTENT MEDICAL	S	1,0	GENERALIST	1,0	1,0	0,0
103,0	ASISTENT MEDICAL	S	1,0	PRINCIPAL	1,0	1,0	0,0
104,0	ASISTENT MEDICAL	PL	1,0	GENERALIST	1,0	1,0	0,0
105,0	ASISTENT MEDICAL	PL	1,0	GENERALIST	1,0	1,0	0,0
106,0	ASISTENT MEDICAL	S	1,0	GENERALIST	1,0	0,0	1,0
107,0	ASISTENT MEDICAL	S	1,0	PRINCIPAL	1,0	0,0	1,0
TOTAL ASISTENTE 3 TURE			21,0		21,0	18,0	3,0
108,0	REGISTRATOR MEDICAL	M	1,0	DEBUTANT	1,0	0,0	1,0
TOTAL PERS.MEDIU POST FIX			1,0		1,0	0,0	1,0

Nr. Crt.	FUNCTIA,GRAD SAU TREAPTA	Nivel studii	Cuquantum post	Grad sau Treapta	Numar posturi aprobate	Numar posturi ocupate	Numar posturi vacante
109,0	INFIRMIERA	G	1,0		1,0	1,0	0,0
110,0	INFIRMIERA	M	1,0		1,0	0,0	1,0
111,0	INFIRMIERA	G	1,0		1,0	1,0	0,0
112,0	INFIRMIERA	G	1,0		1,0	0,0	1,0
113,0	INFIRMIERA	G	1,0		1,0	1,0	0,0
114,0	INFIRMIERA	G	1,0		1,0	1,0	0,0
115,0	INFIRMIERA	M	1,0		1,0	1,0	0,0
116,0	INFIRMIERA	M	1,0		1,0	1,0	0,0
117,0	INFIRMIERA	G	1,0		1,0	1,0	0,0
118,0	INFIRMIERA	G	1,0		1,0	1,0	0,0
119,0	INFIRMIERA	G	1,0		1,0	1,0	0,0
120,0	INFIRMIERA	G	1,0		1,0	1,0	0,0
TOTAL INFIRMIERE			12,0		12,0	10,0	2,0
121,0	INGRIJITOARE	G	1,0		1,0	1,0	0,0
122,0	INGRIJITOARE	G	1,0		1,0	1,0	0,0
TOTAL INGRIJITOARE			2,0		2,0	2,0	0,0
SECTIA CLINICA BOLI INFECTIOASE COPII - 60 PATURI							
123,0	MEDIC SEF SECTIE	S	1,0	II	1,0	0,0	1,0
124,0	MEDIC	S	1,0	SPECIALIST	1,0	1,0	0,0
125,0	MEDIC	S	1,0	SPECIALIST	1,0	1,0	0,0
126,0	MEDIC	S	1,0	PRIMAR	1,0	1,0	0,0
127,0	MEDIC	S	1,0	SPECIALIST	1,0	1,0	0,0
128,0	MEDIC	S	1,0	PRIMAR	1,0	1,0	0,0
TOTAL MEDICI			6,0		6,0	5,0	1,0
129,0	ASISTENT MEDICAL SEF	SSD	1,0	PRINCIPAL	1,0	1,0	0,0
130,0	ASISTENT MEDICAL	PL	1,0	PRINCIPAL	1,0	1,0	0,0
131,0	ASISTENT MEDICAL	PL	1,0	PRINCIPAL	1,0	1,0	0,0
132,0	ASISTENT MEDICAL	S	1,0	PRINCIPAL	1,0	1,0	0,0
133,0	ASISTENT MEDICAL	S	1,0	PRINCIPAL	1,0	1,0	0,0
134,0	ASISTENT MEDICAL	PL	1,0	PRINCIPAL	1,0	1,0	0,0
135,0	ASISTENT MEDICAL	PL	1,0	PRINCIPAL	1,0	1,0	0,0
136,0	ASISTENT MEDICAL	PL	1,0	PRINCIPAL	1,0	1,0	0,0
137,0	ASISTENT MEDICAL	S	1,0	GENERALIST	1,0	0,0	1,0
138,0	ASISTENT MEDICAL	PL	1,0	PRINCIPAL	1,0	1,0	0,0
139,0	ASISTENT MEDICAL	S	1,0	PRINCIPAL	1,0	0,0	1,0
140,0	ASISTENT MEDICAL	S	1,0	PRINCIPAL	1,0	0,0	1,0
141,0	ASISTENT MEDICAL	PL	1,0	PRINCIPAL	1,0	1,0	0,0
142,0	ASISTENT MEDICAL	PL	1,0	PRINCIPAL	1,0	1,0	0,0
143,0	ASISTENT MEDICAL	PL	1,0	PRINCIPAL	1,0	1,0	0,0
144,0	ASISTENT MEDICAL	PL	1,0	PRINCIPAL	1,0	1,0	0,0
145,0	ASISTENT MEDICAL	PL	1,0	PRINCIPAL	1,0	1,0	0,0
146,0	ASISTENT MEDICAL	PL	1,0	PRINCIPAL	1,0	1,0	0,0
147,0	ASISTENT MEDICAL	PL	1,0	PRINCIPAL	1,0	1,0	0,0
148,0	ASISTENT MEDICAL	S	1,0	PRINCIPAL	1,0	1,0	0,0
149,0	ASISTENT MEDICAL	PL	1,0	PRINCIPAL	1,0	1,0	0,0
TOTAL PERS.MED.TREI TURE			21,0		21,0	18,0	3,0
150,0	ASISTENT MEDICAL	S	1,0	PRINCIPAL	1,0	0,0	1,0
151,0	ASISTENT MEDICAL	PL	1,0	PRINCIPAL	1,0	1,0	0,0
152,0	ASISTENT MEDICAL	PL	1,0	PRINCIPAL	1,0	0,0	1,0
TOTAL PERS.MEDIU BIBERONERIE			3,0		3,0	1,0	2,0
153,0	REGISTRATOR MEDICAL	M	1,0		1,0	0,0	1,0
TOTAL PERS.MEDIU POST FIX			1,0		1,0	0,0	1,0
154,0	INFIRMIERA	M	1,0		1,0	1,0	0,0
155,0	INFIRMIERA	G	1,0		1,0	1,0	0,0
156,0	INFIRMIERA	G	1,0		1,0	1,0	0,0
157,0	INFIRMIERA	M	1,0		1,0	1,0	0,0
158,0	INFIRMIERA	G	1,0		1,0	1,0	0,0
159,0	INFIRMIERA	G	1,0		1,0	1,0	0,0
160,0	INFIRMIERA	G	1,0		1,0	1,0	0,0
161,0	INFIRMIERA	G	1,0		1,0	1,0	0,0
162,0	INFIRMIERA	M	1,0		1,0	1,0	0,0
163,0	INFIRMIERA	G	1,0		1,0	1,0	0,0
164,0	INFIRMIERA	G	1,0		1,0	1,0	0,0
165,0	INFIRMIERA	G	1,0		1,0	1,0	0,0
166,0	INFIRMIERA	M	1,0		1,0	1,0	0,0
167,0	INFIRMIERA	M	1,0		1,0	1,0	0,0
168,0	INFIRMIERA	M	1,0		1,0	1,0	0,0
169,0	INFIRMIERA	G	1,0		1,0	1,0	0,0
170,0	INFIRMIERA	G	1,0		1,0	1,0	0,0
TOTAL INFIRMIERE			17,0		17,0	17,0	0,0
171,0	INGRIJITOARE	G	1,0		1,0	1,0	0,0
172,0	INGRIJITOARE	G	1,0		1,0	1,0	0,0

Nr. Crt.	FUNCTIA,GRAD SAU TREAPTA	Nivel studii	Quantum post	Grad sau Treapta	Numar posturi aprobate	Numar posturi ocupate	Numar posturi vacante
173.0	INGRIJITOARE	G	1,0		1,0	1,0	0,0
174.0	INGRIJITOARE	G	1,0		1,0	1,0	0,0
175.0	INGRIJITOARE	G	1,0		1,0	1,0	0,0
176.0	INGRIJITOARE	G	1,0		1,0	1,0	0,0
TOTAL INGRIJITOARE			6,0		6,0	6,0	0,0
AMBULATORIU INTEGRAT BOLI INFECTIOASE							
Activitatea este asigurata de personalul unitatii							
COMPARTIMENT ATI - 10 PATURI							
177.0	MEDIC	S	1,0	SPECIALIST	1,0	1,0	0,0
178.0	MEDIC	S	1,0	SPECIALIST	1,0	1,0	0,0
179.0	MEDIC	S	1,0	SPECIALIST	1,0	1,0	0,0
TOTAL PERS.SUPERIOR			3,0		3,0	3,0	0,0
180.0	ASISTENT MEDICAL	S	1,0	PRINCIPAL	1,0	1,0	0,0
181.0	ASISTENT MEDICAL	S	1,0	PRINCIPAL	1,0	1,0	0,0
182.0	ASISTENT MEDICAL	S	1,0	PRINCIPAL	1,0	0,0	1,0
183.0	ASISTENT MEDICAL	PL	1,0	PRINCIPAL	1,0	1,0	0,0
184.0	ASISTENT MEDICAL	S	1,0	PRINCIPAL	1,0	1,0	0,0
185.0	ASISTENT MEDICAL	PL	1,0	PRINCIPAL	1,0	1,0	0,0
186.0	ASISTENT MEDICAL	PL	1,0	PRINCIPAL	1,0	1,0	0,0
187.0	ASISTENT MEDICAL	S	1,0	PRINCIPAL	1,0	1,0	0,0
188.0	ASISTENT MEDICAL	S	1,0	GENERALIST	1,0	1,0	0,0
189.0	ASISTENT MEDICAL	S	1,0	PRINCIPAL	1,0	1,0	0,0
190.0	ASISTENT MEDICAL	PL	1,0	PRINCIPAL	1,0	1,0	0,0
191.0	ASISTENT MEDICAL	S	1,0	PRINCIPAL	1,0	1,0	0,0
192.0	ASISTENT MEDICAL	PL	1,0	PRINCIPAL	1,0	0,0	1,0
193.0	ASISTENT MEDICAL	PL	1,0	PRINCIPAL	1,0	1,0	0,0
TOTAL PERS.SAN.MEDIU TREI TURE			14,0		14,0	12,0	2,0
194.0	INFIRMIERA	G	1,0		1,0	1,0	0,0
195.0	INFIRMIERA	M	1,0		1,0	1,0	0,0
196.0	INFIRMIERA	G	1,0		1,0	1,0	0,0
197.0	INFIRMIERA	G	1,0		1,0	1,0	0,0
198.0	INFIRMIERA	G	1,0		1,0	1,0	0,0
199.0	INFIRMIERA	M	1,0		1,0	1,0	0,0
200.0	INFIRMIERA	G	1,0		1,0	0,0	1,0
201.0	INFIRMIERA	G	1,0		1,0	1,0	0,0
TOTAL INFIRMIERE			8,0		8,0	7,0	1,0
SECTIA CLINICA DE PNEUMOLOGIE ADULTI I : 75 PATURI din care COMP. TBC 30 paturi SI PNEUMOLOGIE CRONICI 4 PATURI							
202.0	MEDIC SEF SECTIE	S	1,0	II	1,0	0,0	1,0
203.0	MEDIC	S	1,0	PRIMAR	1,0	1,0	0,0
204.0	MEDIC	S	1,0	PRIMAR	1,0	1,0	0,0
205.0	MEDIC	S	1,0	PRIMAR	1,0	1,0	0,0
206.0	MEDIC	S	1,0	PRIMAR	1,0	1,0	0,0
207.0	MEDIC	S	1,0	PRIMAR	1,0	1,0	0,0
207.5	MEDIC	S	0,5	PRIMAR	0,5	0,5	0,0
TOTAL PERS. SANITAR SUPERIOR			6,5		7,0	6,0	1,0
208.5	ASISTENT MEDICAL SEF	PL	1,0	PRINCIPAL	1,0	0,0	1,0
209.5	ASISTENT MEDICAL	S	1,0	PRINCIPAL	1,0	1,0	0,0
210.5	ASISTENT MEDICAL	S	1,0	PRINCIPAL	1,0	1,0	0,0
211.5	ASISTENT MEDICAL	PL	1,0	PRINCIPAL	1,0	1,0	0,0
212.5	ASISTENT MEDICAL	PL	1,0	PRINCIPAL	1,0	1,0	0,0
213.5	ASISTENT MEDICAL	PL	1,0	PRINCIPAL	1,0	0,0	1,0
214.5	KINETOTERAPEUT	S	1,0	PRINCIPAL	1,0	1,0	0,0
215.5	ASISTENT MEDICAL	PL	1,0	PRINCIPAL	1,0	1,0	0,0
216.5	ASISTENT MEDICAL	S	1,0	PRINCIPAL	1,0	1,0	0,0
217.5	ASISTENT MEDICAL	S	1,0	PRINCIPAL	1,0	1,0	0,0
218.5	ASISTENT MEDICAL	S	1,0	PRINCIPAL	1,0	0,0	1,0
219.5	ASISTENT MEDICAL	PL	1,0	PRINCIPAL	1,0	1,0	0,0
220.5	ASISTENT MEDICAL	PL	1,0	PRINCIPAL	1,0	1,0	0,0
221.5	ASISTENT MEDICAL	S	1,0	PRINCIPAL	1,0	1,0	0,0
222.5	ASISTENT MEDICAL	PL	1,0	PRINCIPAL	1,0	1,0	0,0
223.5	ASISTENT MEDICAL	S	1,0	PRINCIPAL	1,0	1,0	0,0
224.5	ASISTENT MEDICAL	S	1,0	PRINCIPAL	1,0	1,0	0,0
225.5	ASISTENT MEDICAL	PL	1,0	PRINCIPAL	1,0	1,0	0,0
226.5	ASISTENT MEDICAL	PL	1,0	GENERALIST	1,0	0,0	1,0
TOTAL PERS.SAN.MEDIU TREI TURE			19,0		19,0	15,0	4,0
227.5	ASISTENT MEDICAL	PL	1,0	PRINCIPAL	1,0	1,0	0,0
228.5	ASISTENT MEDICAL	S	1,0	GENERALIST	1,0	0,0	1,0
229.5	REGISTRATOR MEDICAL	M	1,0	DEBUTANT	1,0	0,0	1,0
TOTAL PERSONAL MED.POST FIX			3,0		3,0	1,0	2,0
230.5	INFIRMIERA	G	1,0		1,0	1,0	0,0
231.5	INFIRMIERA	G	1,0		1,0	1,0	0,0
232.5	INFIRMIERA	G	1,0	DEBUTANT	1,0	1,0	0,0
233.5	INFIRMIERA	G	1,0		1,0	1,0	0,0
234.5	INFIRMIERA	G	1,0		1,0	1,0	0,0
235.5	INFIRMIERA	G	1,0		1,0	1,0	0,0

Nr. Crt.	FUNCTIA,GRAD SAU TREAPTA	Nivel studii	Quantum post	Grad sau Treapta	Numar posturi aprobate	Numar posturi ocupate	Numar posturi vacante
236,5	INFIRMIERA	G	1,0		1,0	1,0	0,0
237,5	INFIRMIERA	G	1,0		1,0	1,0	0,0
238,5	INFIRMIERA	G	1,0		1,0	1,0	0,0
239,5	INFIRMIERA	G	1,0		1,0	0,0	1,0
240,5	INFIRMIERA	G	1,0		1,0	0,0	1,0
TOTAL INFIRMIERE			11,0		11,0	9,0	2,0
COMPARTIMENT ENDOSCOPIE BRONSICA							
Activitatea este asigurata de personalul unitatii							
SECTIA CLINICA DE PNEUMOLOGIE ADULTI II : 75 PATURI din care COMP. TBC 30 paturi SI PNEUMOLOGIE CRONICI 4 PATURI							
241,5	MEDIC SEF SECTIE	S	1,0	II	1,0	1,0	0,0
242,5	MEDIC	S	1,0	PRIMAR	1,0	1,0	0,0
243,5	MEDIC	S	1,0	PRIMAR	1,0	1,0	0,0
244,5	MEDIC	S	1,0	PRIMAR	1,0	1,0	0,0
245,0	MEDIC	S	0,5	PRIMAR	0,5	0,5	0,0
246,0	MEDIC	S	1,0	PRIMAR	1,0	0,0	1,0
TOTAL PERS.SANIT.SUPERIOR			5,5		5,5	4,5	1,0
247,0	ASISTENT MEDICAL SEF	S	1,0	PRINCIPAL	1,0	1,0	0,0
248,0	ASISTENT MEDICAL	PL	1,0	PRINCIPAL	1,0	1,0	0,0
249,0	ASISTENT MEDICAL	S	1,0	PRINCIPAL	1,0	1,0	0,0
250,0	ASISTENT MEDICAL	PL	1,0	GENERALIST	1,0	1,0	0,0
251,0	ASISTENT MEDICAL	S	1,0	PRINCIPAL	1,0	1,0	0,0
252,0	ASISTENT MEDICAL	S	1,0	PRINCIPAL	1,0	1,0	0,0
253,0	ASISTENT MEDICAL	S	1,0	PRINCIPAL	1,0	1,0	0,0
254,0	ASISTENT MEDICAL	S	1,0	PRINCIPAL	1,0	1,0	0,0
255,0	ASISTENT MEDICAL	S	1,0	PRINCIPAL	1,0	1,0	0,0
256,0	ASISTENT MEDICAL	S	1,0	PRINCIPAL	1,0	1,0	0,0
257,0	ASISTENT MEDICAL	S	1,0	PRINCIPAL	1,0	1,0	0,0
258,0	ASISTENT MEDICAL	S	1,0	PRINCIPAL	1,0	1,0	0,0
259,0	ASISTENT MEDICAL	PL	1,0	PRINCIPAL	1,0	1,0	0,0
260,0	ASISTENT MEDICAL	PL	1,0	GENERALIST	1,0	0,0	1,0
261,0	ASISTENT MEDICAL	PL	1,0	GENERALIST	1,0	0,0	1,0
262,0	KINETOTERAPEUT	S	1,0	DEBUTANT	1,0	1,0	0,0
TOTAL PERS.MED.TREI TURE			16,0		16,0	14,0	2,0
263,0	ASISTENT MEDICAL	S	1,0	PRINCIPAL	1,0	1,0	0,0
264,0	ASISTENT MEDICAL	PL	1,0	PRINCIPAL	1,0	1,0	0,0
265,0	REGISTRATOR MEDICAL	M	1,0	PRINCIPAL	1,0	0,0	1,0
TOTAL PERS.MED.POST FIX			3,0		3,0	2,0	1,0
266,0	INFIRMIERA	G	1,0		1,0	1,0	0,0
267,0	INFIRMIERA	M	1,0		1,0	0,0	1,0
268,0	INFIRMIERA	M	1,0		1,0	1,0	0,0
269,0	INFIRMIERA	G	1,0		1,0	1,0	0,0
270,0	INFIRMIERA	G	1,0		1,0	1,0	0,0
271,0	INFIRMIERA	G	1,0		1,0	1,0	0,0
272,0	INFIRMIERA	M	1,0		1,0	1,0	0,0
273,0	INFIRMIERA	G	1,0		1,0	1,0	0,0
274,0	INFIRMIERA	M	1,0		1,0	1,0	0,0
275,0	INFIRMIERA	G	1,0		1,0	0,0	1,0
TOTAL INFIRMIERE			10,0		10,0	8,0	2,0
276,0	INGRIJITOARE	G	1,0		1,0	1,0	0,0
277,0	INGRIJITOARE	G	1,0		1,0	1,0	0,0
TOTAL INGRIJITOARE			2,0		2,0	2,0	0,0
SECTIA CLINICA DE PNEUMOLOGIE COPII : 45 PATURI din care COMP.TBC 26 paturi							
278,0	MEDIC SEF SECTIE	S	1,0	II	1,0	0,0	1,0
279,0	MEDIC	S	1,0	PRIMAR	1,0	1,0	0,0
280,0	MEDIC	S	1,0	PRIMAR	1,0	1,0	0,0
281,0	MEDIC	S	1,0	PRIMAR	1,0	1,0	0,0
282,0	MEDIC	S	1,0	SPECIALIST	1,0	1,0	0,0
TOTAL MEDICI			5,0		5,0	4,0	1,0
283,0	ASISTENT MEDICAL SEF	S	1,0	PRINCIPAL	1,0	1,0	0,0
284,0	ASISTENT MEDICAL	S	1,0	PRINCIPAL	1,0	1,0	0,0
285,0	ASISTENT MEDICAL	PL	1,0	PRINCIPAL	1,0	1,0	0,0
286,0	ASISTENT MEDICAL	PL	1,0	PRINCIPAL	1,0	0,0	1,0
287,0	ASISTENT MEDICAL	S	1,0	PRINCIPAL	1,0	1,0	0,0
288,0	ASISTENT MEDICAL	S	1,0	PRINCIPAL	1,0	0,0	1,0
289,0	ASISTENT MEDICAL	PL	1,0	PRINCIPAL	1,0	1,0	0,0
290,0	ASISTENT MEDICAL	S	1,0	PRINCIPAL	1,0	1,0	0,0
291,0	ASISTENT MEDICAL	S	1,0	PRINCIPAL	1,0	1,0	0,0
292,0	ASISTENT MEDICAL	S	1,0	PRINCIPAL	1,0	1,0	0,0
293,0	ASISTENT MEDICAL	S	1,0	PRINCIPAL	1,0	1,0	0,0
294,0	ASISTENT MEDICAL	S	1,0	PRINCIPAL	1,0	1,0	0,0
295,0	ASISTENT MEDICAL	S	1,0	PRINCIPAL	1,0	1,0	0,0
TOTAL PERS.MED.TREI TURE			13,0		13,0	11,0	2,0

Nr. Crt.	FUNCTIA,GRAD SAU TREAPTA	Nivel studii	Cuquantum post	Grad sau Treapta	Numar posturi aprobate	Numar posturi ocupate	Numar posturi vacante
296,0	INFIRMIERA	G	1,0		1,0	0,0	1,0
297,0	INFIRMIERA	M	1,0		1,0	1,0	0,0
298,0	INFIRMIERA	G	1,0		1,0	1,0	0,0
299,0	INFIRMIERA	G	1,0		1,0	1,0	0,0
300,0	INFIRMIERA	G	1,0		1,0	0,0	1,0
301,0	INFIRMIERA	G	1,0		1,0	1,0	0,0
302,0	INFIRMIERA	G	1,0		1,0	1,0	0,0
303,0	INFIRMIERA	G	1,0		1,0	1,0	0,0
304,0	INFIRMIERA	M	1,0		1,0	1,0	0,0
305,0	INFIRMIERA	G	1,0		1,0	1,0	0,0
TOTAL INFIRMIERE			10,0		10,0	8,0	2,0
CABINET BOLI INFECTIOASE DISPENSARIZARE HEPATITA STERILIZARE							
306,0	ASISTENT MEDICAL	S	1,0	PRINCIPAL	1,0	1,0	0,0
307,0	ASISTENT MEDICAL	PL	1,0	PRINCIPAL	1,0	1,0	0,0
TOTAL PERS.MED.			2,0		2,0	2,0	0,0
CABINET BOLI INFECTIOASE VACCINARE ANTIRABICA							
Activitatea este asigurata de personalul unitatii							
CABINET O.R.L.							
308,0	MEDIC	S	1,0	PRIMAR	1,0	1,0	0,0
TOTAL PERSONAL SANITAR SUPERIOR			1,0		1,0	1,0	0,0
309,0	ASISTENT MEDICAL	S	1,0	PRINCIPAL	1,0	1,0	0,0
TOTAL PERSONAL MEDIU			1,0		1,0	1,0	0,0
CABINET CARDIOLOGIE							
310,0	MEDIC	S	1,0	PRIMAR	1,0	1,0	0,0
TOTAL PERSONAL SANITAR SUPERIOR			1,0		1,0	1,0	0,0
311,0	ASISTENT MEDICAL	PL	1,0	PRINCIPAL	1,0	1,0	0,0
TOTAL PERS. MED			1,0		1,0	1,0	0,0
CABINET NEUROLOGIE							
312,0	MEDIC	S	1,0	SPECIALIST	1,0	0,0	1,0
TOTAL PERSONAL SANITAR SUPERIOR			1,0		1,0	0,0	1,0
CABINET DIABET ZAHARAT, NUTRITIE SI BOLI METABOLICE							
313,0	MEDIC	S	1,0	SPECIALIST	1,0	0,0	1,0
TOTAL PERSONAL SANITAR SUPERIOR			1,0		1,0	0,0	1,0
SPITALIZARE DE ZI HIV/SIDA 25 PATURI							
314,0	MEDIC	S	1,0	PRIMAR	1,0	1,0	0,0
315,0	MEDIC SEF SECTIE	S	1,0	II	1,0	1,0	0,0
TOTAL PERSONAL SANITAR SUPERIOR			2,0		2,0	2,0	0,0
316,0	PSIHOLOG	S	1,0	PRINCIPAL	1,0	1,0	0,0
317,0	ASISTENT MEDICA SOCIAL	S	1,0	PRINCIPAL	1,0	1,0	0,0
TOTAL ALT PERSONAL SANITAR SUPERIOR			2,0		2,0	2,0	0,0
318,0	ASISTENT MEDICAL SEF	S	1,0	PRINCIPAL	1,0	1,0	0,0
319,0	ASISTENT MEDICAL	S	1,0	PRINCIPAL	1,0	1,0	0,0
320,0	ASISTENT MEDICAL	S	1,0	PRINCIPAL	1,0	1,0	0,0
321,0	ASISTENT MEDICAL	S	1,0	PRINCIPAL	1,0	1,0	0,0
322,0	ASISTENT MEDICAL	S	1,0	PRINCIPAL	1,0	1,0	0,0
323,0	REGISTRATOR MEDICAL	M	1,0		1,0	1,0	0,0
324,0	INGRIJITOARE	G	1,0		1,0	1,0	0,0
TOTAL PERS.SAN MEDIU POST FIX			7,0		7,0	7,0	0,0
CABINET DERMATOVENEROLOGIE HIV/SIDA							
325,0	MEDIC	S	1,0	PRIMAR	1,0	1,0	0,0
TOTAL PERSONAL SANITAR SUPERIOR			1,0		1,0	1,0	0,0
CABINET STOMATOLOGIE HIV/SIDA							
326,0	MEDIC	S	1,0	STOMATOLOG	1,0	1,0	0,0
327,0	MEDIC	S	1,0	STOMATOLOG	1,0	1,0	0,0
328,0	ASISTENT MEDICAL	S	1,0	GENERALIST	1,0	0,0	1,0
TOTAL PERSONAL SANITAR SUPERIOR			3,0		3,0	2,0	1,0
DISPENSAR T.B.C.							
329,0	MEDIC	S	1,0	SPECIALIST	1,0	1,0	0,0
330,0	MEDIC	S	1,0	PRIMAR	1,0	1,0	0,0
331,0	MEDIC	S	1,0	PRIMAR	1,0	1,0	0,0
332,0	MEDIC	S	1,0	PRIMAR	1,0	1,0	0,0
333,0	MEDIC	S	1,0	PRIMAR	1,0	1,0	0,0
334,0	MEDIC coordonator	S	1,0	PRIMAR	1,0	1,0	0,0
335,0	MEDIC	S	1,0	PRIMAR	1,0	1,0	0,0
TOTAL PERS.SAN.SUP			7,0		7,0	7,0	0,0

Nr. Crt.	FUNCTIA,GRAD SAU TREAPTA	Nivel studii	Quantum post	Grad sau Treapta	Numar posturi aprobate	Numar posturi ocupate	Numar posturi vacante
336.0	ASISTENT MEDICAL	S	1,0	PRINCIPAL	1,0	1,0	0,0
337.0	ASISTENT MEDICAL	S	1,0	PRINCIPAL	1,0	1,0	0,0
338.0	ASISTENT MEDICAL	S	1,0	PRINCIPAL	1,0	1,0	0,0
339.0	ASISTENT MEDICAL	PL	1,0	PRINCIPAL	1,0	1,0	0,0
340.0	ASISTENT MEDICAL coordonator	S	1,0	PRINCIPAL	1,0	1,0	0,0
341.0	ASISTENT MEDICAL	S	1,0	PRINCIPAL	1,0	1,0	0,0
342.0	ASISTENT MEDICAL	S	1,0	PRINCIPAL	1,0	1,0	0,0
343.0	ASISTENT MEDICAL	S	1,0	PRINCIPAL	1,0	1,0	0,0
344.0	ASISTENT MEDICAL	PL	1,0	PRINCIPAL	1,0	1,0	0,0
345.0	ASISTENT MEDICAL	S	1,0	PRINCIPAL	1,0	1,0	0,0
346.0	REGISTRATOR MEDICAL	M	1,0	PRINCIPAL	1,0	1,0	0,0
347.0	REGISTRATOR MEDICAL	M	1,0	PRINCIPAL	1,0	1,0	0,0
348.0	ASISTENT MEDICAL	PL	1,0	PRINCIPAL	1,0	1,0	0,0
349.0	INFORMATICIAN	S	1,0		1,0	1,0	0,0
TOTAL PERS.SANIT.MEDIU			14,0		14,0	14,0	0,0
350.0	INGRIJITOARE	G	1,0		1,0	1,0	0,0
351.0	INGRIJITOARE	M	1,0		1,0	1,0	0,0
TOTAL INGRIJITOARE			2,0		2,0	2,0	0,0
CABINET EXPLORARI FUNCTIONALE							
352.0	ASISTENT MEDICAL	PL	1,0	PRINCIPAL	1,0	1,0	0,0
TOTAL EXP.FUNCT			1,0		1,0	1,0	0,0
LABORATOR ANALIZE MEDICALE							
353.0	MEDIC SEF LABORATOR	S	1,0	II	1,0	1,0	0,0
354.0	MEDIC	S	1,0	PRIMAR	1,0	1,0	0,0
355.0	MEDIC	S	1,0	PRIMAR	1,0	1,0	0,0
356.0	MEDIC	S	1,0	PRIMAR	1,0	1,0	0,0
357.0	MEDIC	S	1,0	PRIMAR	1,0	1,0	0,0
358.0	MEDIC	S	1,0	PRIMAR	1,0	1,0	0,0
359.0	MEDIC	S	1,0	SPECIALIST	1,0	0,0	1,0
TOTAL PERSONAL SANITAR SUPERIOR			7,0		7,0	6,0	1,0
360.0	BIOLOG	S	1,0	PRINCIPAL	1,0	1,0	0,0
361.0	BIOLOG	S	1,0	PRINCIPAL	1,0	0,0	1,0
TOTAL ALT PERS.SUPERIOR			2,0		2,0	1,0	1,0
362.0	ASISTENT LABORATOR	PL	1,0	PRINCIPAL	1,0	1,0	0,0
363.0	ASISTENT LABORATOR	PL	1,0	PRINCIPAL	1,0	1,0	0,0
364.0	ASISTENT LABORATOR	PL	1,0	PRINCIPAL	1,0	0,0	1,0
365.0	ASISTENT LABORATOR	PL	1,0	PRINCIPAL	1,0	1,0	0,0
366.0	ASISTENT LABORATOR	S	1,0	PRINCIPAL	1,0	1,0	0,0
367.0	ASISTENT LABORATOR	PL	1,0	PRINCIPAL	1,0	1,0	0,0
368.0	ASISTENT LABORATOR	PL	1,0	PRINCIPAL	1,0	1,0	0,0
369.0	ASISTENT LABORATOR	PL	1,0	PRINCIPAL	1,0	1,0	0,0
370.0	ASISTENT LABORATOR	S	1,0	PRINCIPAL	1,0	1,0	0,0
371.0	ASISTENT LABORATOR	S	1,0	PRINCIPAL	1,0	1,0	0,0
372.0	ASISTENT LABORATOR	PL	1,0	PRINCIPAL	1,0	1,0	0,0
373.0	ASISTENT LABORATOR SEF	PL	1,0	PRINCIPAL	1,0	1,0	0,0
374.0	ASISTENT LABORATOR	PL	1,0	PRINCIPAL	1,0	1,0	0,0
375.0	ASISTENT LABORATOR	S	1,0	PRINCIPAL	1,0	1,0	0,0
376.0	ASISTENT LABORATOR	PL	1,0	PRINCIPAL	1,0	1,0	0,0
377.0	ASISTENT MEDICAL	PL	1,0	PRINCIPAL	1,0	1,0	0,0
378.0	REGISTRATOR MEDICAL	M	1,0		1,0	1,0	0,0
TOTAL PERS.SANITAR MEDIU			17,0		17,0	16,0	1,0
379.0	INGRIJITOARE	G	1,0		1,0	1,0	0,0
380.0	INGRIJITOARE	G	1,0		1,0	1,0	0,0
TOTAL INGRIJITOARE CURATENIE			2,0		2,0	2,0	0,0
COMPARTIMENT BK							
381.0	MEDIC	S	1,0	PRIMAR	1,0	1,0	0,0
382.0	MEDIC	S	1,0	SPECIALIST	1,0	1,0	0,0
383.0	MEDIC	S	1,0	SPECIALIST	1,0	0,0	1,0
TOTAL PERS.SAN.SUP			3,0		3,0	2,0	1,0
384.0	BIOLOG	S	1,0	PRINCIPAL	1,0	1,0	0,0
385.0	BIOLOG	S	1,0	SPECIALIST	1,0	1,0	0,0
386.0	BIOLOG	S	1,0		1,0	1,0	0,0
TOTAL ALT PERS.SUPERIOR			3,0		3,0	3,0	0,0
387.0	ASISTENT LABORATOR	PL	1,0	PRINCIPAL	1,0	1,0	0,0
388.0	ASISTENT LABORATOR	S	1,0	PRINCIPAL	1,0	1,0	0,0
TOTAL PERS.SANIT. POST FIX			2,0		2,0	2,0	0,0
389.0	INGRIJITOARE	G	1,0		1,0	1,0	0,0
TOTAL INGRIJITOARE			1,0		1,0	1,0	0,0
LABORATOR RADIOLOGIE SI IMAGISTICA MEDICALA							
390.0	MEDIC SEF LABORATOR	S	1,0	II	1,0	0,0	1,0
391.0	MEDIC	S	1,0	PRIMAR	1,0	1,0	0,0

Nr. Crt.	FUNCTIA,GRAD SAU TREAPTA	Nivel studii	Quantum post	Grad sau Treapta	Numar posturi aprobate	Numar posturi ocupate	Numar posturi vacante
392,0	MEDIC	S	1,0	SPECIALIST	1,0	0,0	1,0
392,5	MEDIC	S	0,5	PRIMAR	0,5	0,0	0,5
393,5	MEDIC (TBC)	S	1,0	PRIMAR	1,0	1,0	0,0
394,5	MEDIC (TBC)	S	1,0	PRIMAR	1,0	1,0	0,0
TOTAL PERS.SANIT.SUPERIOR			5,5		5,5	3,0	2,5
395,5	FIZICIAN	S	1,0	FIZICIAN	1,0	1,0	0,0
TOTAL ALT PERS. SANIT. SUPERIOR			1,0		1,0	1,0	0,0
396,5	ASISTENT RADIOLOGIE	PL	1,0	PRINCIPAL	1,0	1,0	0,0
397,5	ASISTENT RADIOLOGIE	PL	1,0	PRINCIPAL	1,0	1,0	0,0
398,5	ASISTENT RADIOLOGIE(TBC)	PL	1,0	PRINCIPAL	1,0	1,0	0,0
399,5	ASISTENT RADIOLOGIE(TBC)	PL	1,0	PRINCIPAL	1,0	1,0	0,0
400,5	ASISTENT RADIOLOGIE(TBC)	PL	1,0	PRINCIPAL	1,0	1,0	0,0
401,5	ASISTENT RADIOLOGIE(TBC)	PL	1,0	PRINCIPAL	1,0	1,0	0,0
402,5	ASISTENT RADIOLOGIE(TBC)	PL	1,0	PRINCIPAL	1,0	1,0	0,0
403,5	ASISTENT RADIOLOGIE(TBC)	PL	1,0	PRINCIPAL	1,0	1,0	0,0
404,5	ASISTENT RADIOLOGIE	S	1,0	DEBUTANT	1,0	0,0	1,0
405,5	ASISTENT RADIOLOGIE	S	1,0	GENERALIST	1,0	0,0	1,0
406,5	ASISTENT MEDICAL	S	1,0	PRINCIPAL	1,0	0,0	1,0
407,5	ASISTENT MEDICAL	S	1,0	GENERALIST	1,0	0,0	1,0
408,5	ASISTENT MEDICAL	PL	1,0	PRINCIPAL	1,0	0,0	1,0
409,5	ASISTENT MEDICAL	PL	1,0	GENERALIST	1,0	0,0	1,0
TOTAL PERS.SANIT.MEDIU			14,0		14,0	8,0	6,0
410,5	INGRIJITOARE	G	1,0		1,0	1,0	0,0
TOTAL INGRIJITOARE			1,0		1,0	1,0	0,0
LABORATOR ANATOMIE PATOLOGICA							
411,5	MEDIC	S	1,0	PRIMAR	1,0	1,0	0,0
412,0	MEDIC	S	0,5	SPECIALIST	0,5	0,5	0,0
TOTAL PERS.SANIT.SUPERIOR			1,5		1,5	1,5	0,0
413,0	ASISTENT LABORATOR	S	1,0	PRINCIPAL	1,0	1,0	0,0
414,0	ASISTENT LABORATOR autopsier	PL	1,0	PRINCIPAL	1,0	1,0	0,0
TOTAL PERS.MED.			2,0		2,0	2,0	0,0
415,0	INGRIJITOARE	G	1,0		1,0	1,0	0,0
TOTAL INGRIJITOARE			1,0		1,0	1,0	0,0
MEDIC INTREPRINDERE							
416,0	MEDIC	S	1,0	SPECIALIST	1,0	1,0	0,0
TOTAL MED.INTREPRINDERE			1,0		1,0	1,0	0,0
FARMACIE							
417,0	FARMACIST SEF	S	1,0	II	1,0	1,0	0,0
418,0	FARMACIST	S	1,0		1,0	0,0	1,0
419,0	FARMACIST	S	1,0	PRIMAR	1,0	1,0	0,0
420,0	FARMACIST	S	1,0	SPECIALIST	1,0	1,0	0,0
TOTAL FARMACISTI			4,0		4,0	3,0	1,0
421,0	ASISTENT FARMACIE	PL	1,0	PRINCIPAL	1,0	1,0	0,0
422,0	ASISTENT FARMACIE	PL	1,0	PRINCIPAL	1,0	1,0	0,0
423,0	ASISTENT FARMACIE	S	1,0	PRINCIPAL	1,0	1,0	0,0
424,0	ASISTENT FARMACIE	PL	1,0	PRINCIPAL	1,0	1,0	0,0
425,0	ASISTENT FARMACIE	PL	1,0	GENERALIST	1,0	1,0	0,0
TOTAL PERSONAL MEDIU			5,0		5,0	5,0	0,0
426,0	INGRIJITOARE	G	1,0		1,0	0,0	1,0
TOTAL INGRIJITOARE			1,0		1,0	0,0	1,0
APARAT FUNCTIONAL							
SERVICIU RESURSE UMANE							
427,0	ŞEF SERVICIU	S	1,0	II	1,0	1,0	0,0
428,0	ECONOMIST	S	1,0	IA	1,0	1,0	0,0
429,0	ECONOMIST	S	1,0	IA	1,0	1,0	0,0
430,0	ECONOMIST	S	1,0	I	1,0	1,0	0,0
431,0	ECONOMIST	S	1,0	I	1,0	1,0	0,0
TOTAL SERVICIU RESURSE UMANE			5,0		5,0	5,0	0,0
BIROU INFORMATICA							
432,0	ŞEF BIROU	S	1,0	II	1,0	1,0	0,0
433,0	ANALIST PROGRAMATOR	S	1,0	IA	1,0	1,0	0,0
434,0	ANALIST PROGRAMATOR	S	1,0	IA	1,0	1,0	0,0
TOTAL INFORMATICA			3,0		3,0	3,0	0,0
SERVICIU STATISTICA ŞI EVALUARE MEDICALA							
435,0	ŞEF SERVICIU	S	1,0	II	1,0	0,0	1,0
436,0	OPERATOR CONTROLOR DATE	M	1,0	I	1,0	1,0	0,0
437,0	OPERATOR CONTROLOR DATE	M	1,0	I	1,0	1,0	0,0
438,0	ECONOMIST	S	1,0	IA	1,0	1,0	0,0
439,0	REFERENT	M	1,0	IA	1,0	1,0	0,0

Nr. Crt.	FUNCTIA,GRAD SAU TREAPTA	Nivel studii	Cuantiu post	Grad sau Treapta	Numar posturi aprobate	Numar posturi ocupate	Numar posturi vacante
440,0	ECONOMIST	S	1,0	IA	1,0	1,0	0,0
441,0	INFORMATICIAN	S	1,0	I	1,0	1,0	0,0
442,0	ECONOMIST	S	1,0	II	1,0	1,0	0,0
443,0	ECONOMIST	S	1,0	IA	1,0	1,0	0,0
TOTAL SERVICIU STATISTICĂ ȘI EVALUARE MEDICALĂ			9,0		9,0	8,0	1,0
SERVICIU MANAGEMENT AL CALITĂȚII SERVICIILOR DE SANATATE							
444,0	ŞEF SERVICIU	S	1,0	I	1,0	0,0	1,0
445,0	MEDIC	S	1,0	SPECIALIST	1,0	0,0	1,0
446,0	REFERENT DE SPECIALITATE	S	1,0	I	1,0	0,0	1,0
447,0	REFERENT DE SPECIALITATE	S	1,0	IA	1,0	1,0	0,0
448,0	REFERENT DE SPECIALITATE	S	1,0	I	1,0	1,0	0,0
449,0	REFERENT DE SPECIALITATE	S	1,0	IA	1,0	1,0	0,0
450,0	REFERENT DE SPECIALITATE	S	1,0	II	1,0	0,0	1,0
TOTAL SERVICIU MANAGEMENT AL CALITĂȚII SERVICIILOR DE SAN			7,0		7,0	3,0	4,0
COMPARTIMENT JURIDIC							
451,0	CONSILIER JURIDIC	S	1,0	IA	1,0	1,0	0,0
TOTAL COMP JURIDIC			1,0		1,0	1,0	0,0
COMPARTIMENT AUDIT PUBLIC INTERN							
452,0	AUDITOR	S	1,0	IA	1,0	1,0	0,0
TOTAL COMPARTIMENT AUDIT PUBLIC INTERN			1,0		1,0	1,0	0,0
COMPARTIMENT CONFESIONAL							
453,0	PREOT	S	1,0	I	1,0	1,0	0,0
TOTAL COMPARTIMENT CONFESIONAL			1,0		1,0	1,0	0,0
SERVICIUL FINANCIAR-CONTABILITATE							
454,0	ŞEF SERVICIU	S	1,0	II	1,0	0,0	1,0
455,0	ECONOMIST	S	1,0	IA	1,0	1,0	0,0
456,0	ECONOMIST	S	1,0	IA	1,0	1,0	0,0
457,0	ECONOMIST	S	1,0	IA	1,0	1,0	0,0
458,0	ECONOMIST	S	1,0	IA	1,0	1,0	0,0
TOTAL SERVICIU FINANCIAR CONTABILITATE			5,0		5,0	4,0	1,0
SERVICIUL APROVIZIONARE - TRASNPORTURI							
459,0	ŞEF SERVICIU	S	1,0	II	1,0	0,0	1,0
460,0	ŞEF DEPOZIT MAGAZINER	M	1,0	I	1,0	0,0	1,0
461,0	ECONOMIST	S	1,0	IA	1,0	1,0	0,0
462,0	ECONOMIST	S	1,0	IA	1,0	1,0	0,0
463,0	ECONOMIST	S	1,0	IA	1,0	1,0	0,0
464,0	MAGAZINER	M	1,0		1,0	1,0	0,0
465,0	MAGAZINER	M	1,0		1,0	0,0	1,0
TOTAL APROVIZIONARE - TRASNPORTURI			7,0		7,0	4,0	3,0
COMPARTIMENT TRANSPORTURI							
466,0	SOFER (AUTOSANITARA)	M	1,0	II	1,0	1,0	0,0
467,0	SOFER (AUTOSANITARA)	M	1,0	II	1,0	1,0	0,0
468,0	SOFER	M	1,0	II	1,0	1,0	0,0
469,0	SOFER (AUTOSANITARA)	M	1,0	II	1,0	1,0	0,0
470,0	SOFER (AUTOSANITARA)	M	1,0	II	1,0	1,0	0,0
471,0	SOFER (AUTOSANITARA)	M	1,0	II	1,0	1,0	0,0
472,0	SOFER (AUTOSANITARA)	M	1,0	II	1,0	1,0	0,0
TOTAL COMPARTIMENT TRANSPORTURI			7,0		7,0	7,0	0,0
BIROUL ACHIZIȚII PUBLICE, CONTRACTARE							
473,0	ŞEF BIROU	S	1,0	II	1,0	1,0	0,0
474,0	ECONOMIST	S	1,0	IA	1,0	1,0	0,0
475,0	CONSILIER JURIDIC	S	1,0	IA	1,0	1,0	0,0
TOTAL BIROU ACHIZIȚII PUBLICE, CONTRACTARE			3,0		3,0	3,0	0,0
COMPARTIMENT ADMINISTRATIV- SECURITATEA MUNCII, PSI, PROTECTIE CIVILĂ ȘI SITUAȚII DE URGENȚĂ							
476,0	INGINER	S	1,0	IA	1,0	1,0	0,0
477,0	CASIER	M	1,0	I	1,0	1,0	0,0
TOTALCOMPARTIMENT ADMINISTRATIV- SECURITATEA MUNCII, PSI			2,0		2,0	2,0	0,0
SERVICIUL PRIVAT PENTRU SITUAȚII DE URGENTA							
478,0	ŞEF SERVICIU	S	1,0		1,0	0,0	1,0
479,0	POMPIER SERVANT	M	1,0	DEBUTANT	1,0	0,0	1,0
480,0	POMPIER SERVANT	M	1,0	DEBUTANT	1,0	0,0	1,0
481,0	POMPIER SERVANT	M	1,0		1,0	0,0	1,0
482,0	POMPIER SERVANT	M	1,0		1,0	0,0	1,0
483,0	POMPIER SERVANT	M	1,0		1,0	0,0	1,0
TOTAL SERVICIUL PRIVAT PENTRU SITUAȚII DE URGENTA			6,0		6,0	0,0	6,0
BLOC LENJERIE SPALATORIE							
484,0	SPALATOREASA	M	1,0	II	1,0	1,0	0,0
485,0	SPALATOREASA	M	1,0	II	1,0	1,0	0,0
486,0	SPALATOREASA	M	1,0	II	1,0	1,0	0,0
487,0	SPALATOREASA	M	1,0	II	1,0	1,0	0,0
488,0	SPALATOREASA	M	1,0	II	1,0	1,0	0,0

Nr. Crt.	FUNCTIA,GRAD SAU TREAPTA	Nivel studii	Cuantiu post	Grad sau Treapta	Numar posturi aprobate	Numar posturi ocupate	Numar posturi vacante
489,0	MUNCITOR (LENJEREASA)	M	1,0	II	1,0	1,0	0,0
TOTAL BLOC LENJERIE SPALATORIE			6,0		6,0	6,0	0,0
DESERVIRE							
490,0	PORTAR - I	M	1,0	I	1,0	1,0	0,0
491,0	PORTAR - I	M	1,0	I	1,0	1,0	0,0
492,0	PORTAR - I	M	1,0	I	1,0	1,0	0,0
493,0	PORTAR I	M	1,0	I	1,0	1,0	0,0
494,0	PORTAR- I	M	1,0	I	1,0	1,0	0,0
495,0	PORTAR- I	M	1,0		1,0	0,0	1,0
496,0	PORTAR- I	M	1,0	I	1,0	1,0	0,0
497,0	ARHIVAR I	M	1,0		1,0	1,0	0,0
498,0	CURIER I	M	1,0		1,0	1,0	0,0
TOTAL DESERVIRE			9,0		9,0	8,0	1,0
COMPARTIMENT DIETETICA SI BLOC ALIMENTAR							
499,0	ASISTENT MEDICAL	PL	1,0	PRINCIPAL	1,0	1,0	0,0
500,0	ASISTENT MEDICAL	PL	1,0	PRINCIPAL	1,0	1,0	0,0
501,0	MUNCITOR (BUCATAR)	M	1,0	I	1,0	1,0	0,0
502,0	MUNCITOR (BUCATAR)	M	1,0	I	1,0	1,0	0,0
503,0	MUNCITOR (BUCATAR)	M	1,0	I	1,0	1,0	0,0
504,0	MUNCITOR (BUCATAR)	M	1,0	I	1,0	1,0	0,0
505,0	MUNCITOR (BUCATAR)	M	1,0	I	1,0	1,0	0,0
506,0	MUNCITOR (BUCATAR)	M	1,0	I	1,0	1,0	0,0
507,0	MUNCITOR (BUCATAR)	M	1,0	I	1,0	1,0	0,0
508,0	MUNCITOR (BUCATAR)	M	1,0	IV	1,0	1,0	0,0
509,0	MUNCITOR (BUCATAR)	M	1,0	II	1,0	0,0	1,0
510,0	MUNCITOR (BUCATAR)	M	1,0	IV	1,0	1,0	0,0
511,0	MUNCITOR (BUCATAR)	M	1,0	IV	1,0	1,0	0,0
512,0	MUNCITOR (BUCATAR)	M	1,0	IV	1,0	1,0	0,0
TOTAL COMPARTIMENT DIETETICA SI BLOC ALIMENTAR			14,0		14,0	13,0	1,0
COMPARTIMENT LIFTURI - CENTRALA TELEFONICA							
513,0	MUNCITOR (LIFTIER)	M	1,0	I	1,0	1,0	0,0
514,0	MUNCITOR (LIFTIER)	M	1,0	III	1,0	1,0	0,0
515,0	MUNCITOR (LIFTIER)	M	1,0	III	1,0	1,0	0,0
516,0	MUNCITOR (LIFTIER)	M	1,0	I	1,0	1,0	0,0
517,0	MUNCITOR (LIFTIER)	M	1,0	II	1,0	1,0	0,0
TOTAL COMPARTIMENT LIFTURI - CENTRALA TELEFONICA			5,0		5,0	5,0	0,0
ACTIVITATE DE FRIZERIE							
518,0	MUNCITOR (FRIZER)	M	1,0	II	1,0	1,0	0,0
TOTAL FRIZERIE			1,0		1,0	1,0	0,0
APARATURA MEDICALA							
519,0	TEHNICIAN APARATURA MEDICALA	PL	1,0	PRINCIPAL	1,0	1,0	0,0
TOTAL APARATURA MEDICALA			1,0		1,0	1,0	0,0
COMPARTIMENT INTRETINERE CLADIRI, OXIGEN ,INSTALATII APA, LUMINA SI INCALZIRE, INTRETINERE SPATII VERZI							
520,0	MUNCITOR (INSTALATOR)	M	1,0	IV	1,0	1,0	0,0
521,0	MUNCITOR (INSTALATOR)	M	1,0	I	1,0	1,0	0,0
522,0	MUNCITOR (ELECTRICIAN)	M	1,0	I	1,0	1,0	0,0
523,0	MUNCITOR (ELECTRICIAN)	M	1,0	IV	1,0	1,0	0,0
524,0	MUNCITOR (LACATUS MECANIC)	M	1,0	I	1,0	1,0	0,0
525,0	MUNCITOR (LACATUS MECANIC)	M	1,0	IV	1,0	1,0	0,0
526,0	MUNCITOR (LACATUS MECANIC)	M	1,0	I	1,0	1,0	0,0
527,0	MUNCITOR (LACATUS MECANIC)	M	1,0	II	1,0	1,0	0,0
528,0	MUNCITOR (SUDOR)	M	1,0	II	1,0	1,0	0,0
529,0	MUNCITOR (LACATUS MECANIC)	M	1,0	I	1,0	1,0	0,0
530,0	MUNCITOR (LACATUS MECANIC)	M	1,0	III	1,0	1,0	0,0
531,0	MUNCITOR	M	1,0	I	1,0	1,0	0,0
532,0	MUNCITOR	M	1,0	I	1,0	0,0	1,0
TOTAL INTRETINERE CLADIRI, OXIGEN , INSTALATII APA, LUMINA S			13,0		13,0	12,0	1,0
COMPARTIMENT TEHNIC							
533,0	INGINER	S	1,0	I	1,0	1,0	0,0
534,0	INGINER	S	1,0	II	1,0	1,0	0,0
TOTAL COMPARTIMENT TEHNIC			2,0		2,0	2,0	0,0
COMP. CLORINARE (EPURARE APE UZATE SI REZIDUALE)							
535,0	SUBINGINER CHIMIST	SSD	1,0	SUBINGINER	1,0	1,0	0,0
TOTAL COMP. CLORINARE (EPURARE APE UZATE SI REZIDUALE)			1,0		1,0	1,0	0,0
EXPLOATARE CENTRALA TERMICA							
536,0	MUNCITOR (FOCHIST)	M	1,0	I	1,0	1,0	0,0
537,0	MUNCITOR (FOCHIST)	M	1,0	IV	1,0	1,0	0,0
538,0	MUNCITOR (FOCHIST)	M	1,0	I	1,0	1,0	0,0
539,0	MUNCITOR (FOCHIST)	M	1,0	IV	1,0	1,0	0,0
540,0	MUNCITOR (FOCHIST)	M	1,0	II	1,0	1,0	0,0
541,0	MUNCITOR (FOCHIST)	M	1,0	I	1,0	1,0	0,0

Nr. Crt.	FUNCTIA,GRAD SAU TREAPTA	Nivel studii	Cuatum post	Grad sau Treapta	Numar posturi aprobate	Numar posturi ocupate	Numar posturi vacante
	TOTAL EXPLOATARE CENTRALA TERMICA		6,0		6,0	6,0	0,0
	TOTAL GENERAL		541,0		541,0	447,5	92,5
* IN LABORATORUL DE RADIOLOGIE SI IMAGISTICA MEDICALA SUNT INCLUSI SI MEDICII SI ASISTENTII CARE DESERVESC DISPENSARUL TBC (TBC)*							

MANAGER
Sef Lucrari Dr. Turcu Adina Andreea

Sef Serviciu Resurse Umane
C.J. Buliteanu Veronica

NR.11899/19.08.2022

CATRE

CONSILIUL LOCAL AL MUNICIPIULUI CRAIOVA

CONSILIUL LOCAL
AL MUNICIPIULUI CRAIOVA

NR.

138 / 22.08.2022

Va înaintăm atașurat spre aprobare statul de funcții al unitatii noastre, și organigrama, valabile cu 01.09.2022 întocmit cu respectarea numărului mediu de posturi stabilit de managerul unitatii pentru asistenta medicala spitaliceasca și ambulatorie și a numărului mediu de posturi aprobat de Ministerul Sanatatii pentru asistenta medicala finantata de la Bugetul de Stat – Capitolul Transferuri.

Nu numărul mediu de posturi, s-a stabilit de catre Managerul spitalului în conformitate cu prevederile art. 185 din Legea 95/2006 privind reforma în domeniul sanatatii și a normativelor de personal în vigoare (Ordin MS nr. 1224/2010), și a numărului de rezidenți distribuiti de Ministerul Sanatatii (pe locuri, nu pe posturi).

Posturi finanțate din Fondul National Unic de Asigurari de Sanatate in asistenta medicala spitaliceasca:

Nr. Crt.	Nr. Total de posturi pe 2022	Din care	
		Personal sanitar (medici, alt personal superior sanitar și personal mediu sanitar)	Personal conducere, auxiliar sanitar, tehnic, economic, administrativ și muncitori
1	498	269 din care: 62 medici	229 din care: 113 personal auxiliar
2		10 alt personal superior	28 tesa
3		197 personal mediu	45 muncitori
4			7 soferi
5			4 Conducere
6			9 statistica și evaluare medicala
7			7 management calitate servicii
8			1 preot
9			9 deservire
10			6 serviciu privat situatii urgenta

Posturi finanțate de la Bugetul de Stat – Capitolul Transferuri:

Nr. Crt.	Nr. Total de posturi pe 2022	Din care	
		Personal sanitar (medici, alt personal superior sanitar și personal mediu sanitar)	Personal auxiliar sanitar, tehnic, economic, administrativ și muncitori
1	221 (din care 178 rezidenți pe loc)	218 din care: 12 medici	3 din care: 3 personal auxiliar
2		3 alt personal superior	-
3		25 personal mediu	-
4		178 medici rezidenți pe loc	



Dr. Glosariu
22.08.2022



**SPITALUL CLINIC DE BOLI
INFECȚIOASE ȘI
PNEUMOFTIZIOLOGIE
„VICTOR BABEȘ“ CRAIOVA**



Adresa: Bvd. Calea București , nr.126
Tel: +40251-542.333, Fax: +40251-543157
Web: www.vbabes-cv.ro, E-mail: spital@vbabes-cv.ro

Fundamentare Stat Functii 2022

Normativul Spitalului Clinic de Boli Infecțioase și Pneumoftiziologie Victor Babeș Craiova este stabilit , la un număr mediu de posturi, în conformitate cu prevederile art. 185 din Legea 95/2006 privind reforma în domeniul sănătății și a normativelor de personal în vigoare (Ordin MS nr. 1224/2010).

Astfel pe parte medicală , conform Anexei nr.1 din normativul mai sus menționat - asistentă la paturi s-a calculat la medici la un număr de 10 paturi (exemplu 75 paturi : 10 = 7,5 medici), la asistente la 10 paturi (exemplu – 75 paturi : 10 X 3 = 22 asistente la 3 ture), iar la infirmiere la 12.5 paturi (exemplu 75 paturi : 12.5 X 3 = 18 infirmiere la 3 ture .La posturile fixe s-a calculat pentru asistente astfel : 15.5 paturi (exemplu 75 paturi : 15,5 X 3 = 14).

Conform normativului, unitatea are un normat de 697 posturi și propunere spre aprobare, pentru anul 2022 de 541 de posturi.

Fata de aprobatul de 541 posturi, în stat se regăsesc, în plus și cei 178 rezidenți alocați unității noastre de către Ministerul Sănătății pe locuri de rezidențiat, care nu afectează posturile unității fiind plătiți de la Bugetul de stat-Capitolul transferuri –rezidenți.

La Tesa normarea s-a calculat conform Anexei nr.9 punctul 3 unități între 301 și 500 de paturi, lunadu-se în calcul normarea la 410 paturi spitalizare continuă.

Se vor efectua următoarele modificări :

MODIFICARI DE PERSONAL :

- 1 post vacant de medic primar pneumolog, în cadrul Clinicii Pneumologie Adulți II (poz.246 stat funcții) prin transformarea postului de asistent medical principal (S) de la poz.251 stat vechi, post pe care va funcționa medic primar pneumolog care a ocupat funcția de Medic Șef Secție ;
- Salariatul de la poz.245 stat vechi, se mută cu tot cu post de la Clinica Pneumologie Adulți II la Clinica Pneumologie Adulți I (poz.207.5 Stat funcții)
- Salariatul de la poz.208.5 stat vechi, se mută cu tot cu post de la Clinica Pneumologie Adulți I la Clinica Pneumologie Adulți II (poz.245 Stat)
- Se transformă postul de Infirmieră (vacant) de la Clinica BI Ad.II (poz.119 stat vechi), în post de Portar și se creează un nou post în cadrul Comp.Deservire (poz.495 stat funcții) ;
- Se transformă postul de As.Med.(vacant) de la Clinica PNF II (poz.253 stat vechi), în post de Medic Specialist și se creează un nou post în cadrul Laboratorului de Analize Medicale – Compartiment BK (poz.383 stat funcții) post absolut necesar pentru buna desfășurare a actului medical la nivelul laboratorului unității(conform solicitării nr.10647/28.07.2022 Medicului Coordonator al Programului de Prevenire, Supraveghere și Control Al Tuberculozei al Județului Dolj- atasată la prezenta) ;

- Se transforma postul vacant prin pensionare de Farmacist primar de la Farmacie (poz.419 stat vechi), in post de Farmacist (poz.418 stat functii) ;
- Salariatul de la poz.494 stat functii vechi , din cadrul Comp.Deservire se muta cu tot cu post la Comp.Intret.cladiri, oxigen, instalatii apa, lumina si incalizre, intretinere spatii verzi (poz.529 stat functii) ;
- Salariatul de la poz.513 stat functii vechi , din cadrul Comp.Lifturi se muta cu tot cu post la Comp.Intret.cladiri, oxigen, instalatii apa, lumina si incalizre, intretinere spatii verzi (poz.530 stat nou) ;
- Salariatul de la poz.517 stat functii vechi , din cadrul Comp.Lifturi se muta cu tot cu post la Comp.Intret.cladiri, oxigen, instalatii apa, lumina si incalizre, intretinere spatii verzi (poz.525 stat nou) ;
- Salariatul de la poz.532 stat functii vechi , din cadrul Comp.Intret.cladiri, oxigen, instalatii apa, lumina si incalizre, intretinere spatii verzi se muta cu tot cu post la Comp.Lifturi (poz.516 stat nou) ;
- Salariatul de la poz.529 stat functii vechi , din cadrul Comp.Intret.cladiri, oxigen, instalatii apa, lumina si incalizre, intretinere spatii verzi se muta cu tot cu post la Comp.Deservire (poz.496 stat nou) ;

Diverse :

- S-au incris in stat promovarile din debutant, cat si promovarile de grad profesional a personalului medical, care au avut loc pana la data depunerii statului ;
- S-au modificat in stat si pozitiile in care pana la data depunerii statului de functii, salariatii s-au pensionat, au decedat sau au plecat din unitate cat si personalul transferat in cadrul unitatii ;
- S-a dat o noua numerotare statului de functii ;

Manager

Sef Lucrari Dr.Turcu Andreea Adina

Director Medical

Dr.Nicolosu Dragos

Director Financiar-Contabil

Ec.Vasiluta Cosmin

Director de Ingrijiri Medicale

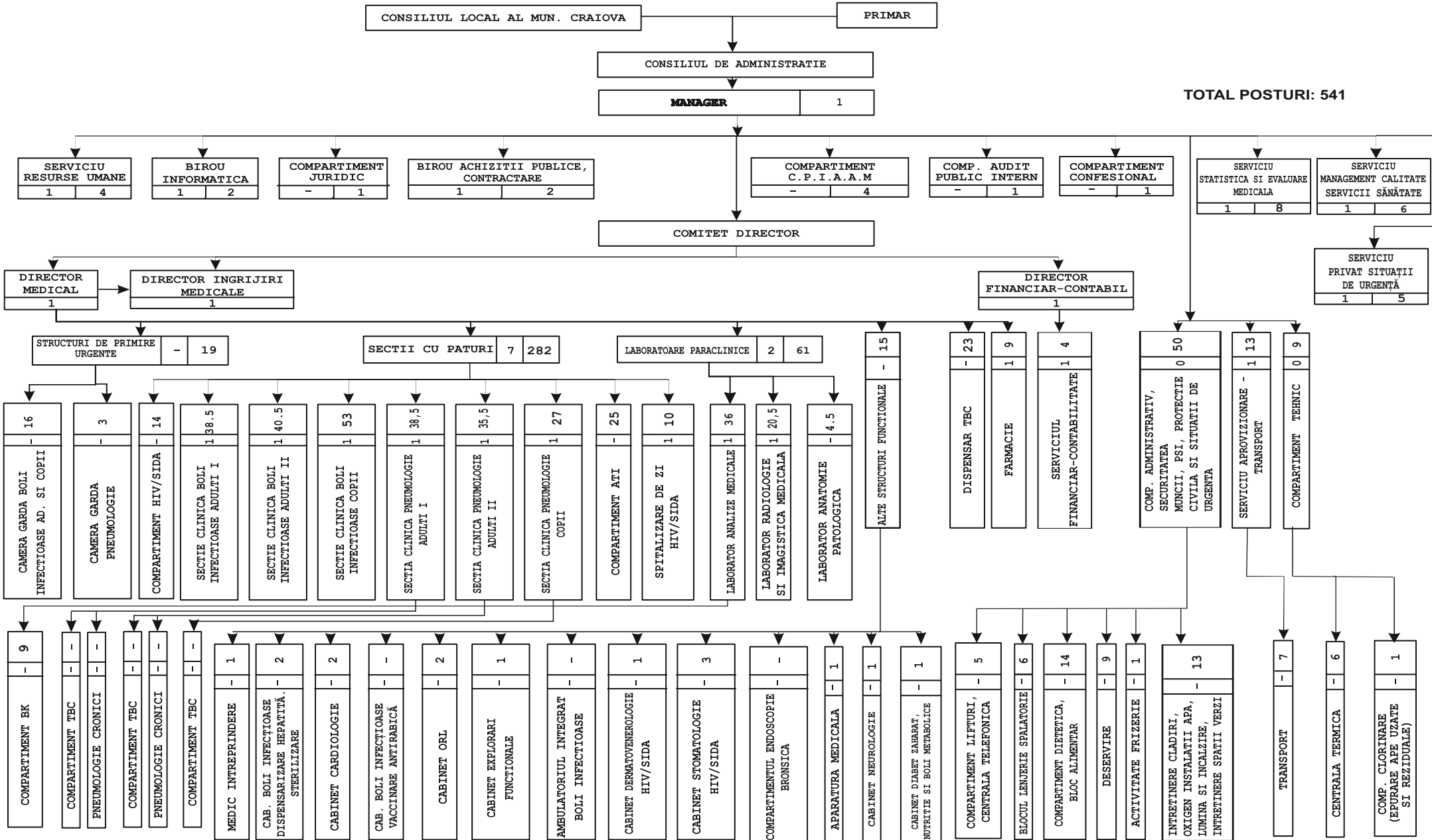
As.Med.Pr.Poenaru Luminita

Sef Serviciu Resurse Umane

Cj Buliteanu Veronica

**ORGANIGRAMA SPITALULUI CLINIC DE BOLI INFECȚIOASE
 ȘI PNEUMOTIZIOLOGIE „VICTOR BABEȘ“ CRAIOVA PENTRU ANUL 2022**

TOTAL POSTURI: 541



STATUL DE FUNCTII
AL SPITALULUI CLINIC DE BOLI INFECTIOASE ŞI PNEUMFTIZIOLOGIE "VICTOR BABEŞ" CRAIOVA

Nr. Crt.	FUNCTIA,GRAD SAU TREAPTA	Nivel studii	Cuquantum post	Grad sau Treapta	Numar posturi aprobate	Numar posturi ocupate	Numar posturi vacante
CONDUCEREA SPITALULUI							
1,0	MANAGER	S	1,0	II	1,0	1,0	0,0
2,0	DIRECTOR MEDICAL	S	1,0	II	1,0	0,0	1,0
3,0	DIRECTOR FIN.CONTABIL	S	1,0	II	1,0	0,0	1,0
4,0	DIRECTOR INGRIJIRI MEDICALE	S	1,0	II	1,0	1,0	0,0
TOTAL CONDUCERE			4,0		4,0	2,0	2,0
COMPARTIMENT PREVENIRE INFECTII ASOCIATE ASISTENTEI MEDICALE							
5,0	MEDIC	S	1,0	PRIMAR	1,0	1,0	0,0
TOTAL PERSONAL SANITAR			1,0		1,0	1,0	0,0
6,0	ASISTENT MEDICAL	PL	1,0	PRINCIPAL	1,0	1,0	0,0
7,0	ASISTENT MEDICAL	PL	1,0	PRINCIPAL	1,0	1,0	0,0
TOTAL PERSONAL MEDIU			2,0		2,0	2,0	0,0
8,0	AGEN DDD	M	1,0		1,0	1,0	0,0
TOTAL PERSONAL AUXILIAR			1,0		1,0	1,0	0,0
CAMERA DE GARDA BOLI INFECTIOASE							
9,0	ASISTENT MEDICAL	PL	1,0	PRINCIPAL	1,0	1,0	0,0
10,0	ASISTENT MEDICAL	S	1,0	PRINCIPAL	1,0	1,0	0,0
11,0	ASISTENT MEDICAL	S	1,0	PRINCIPAL	1,0	1,0	0,0
12,0	ASISTENT MEDICAL	PL	1,0	PRINCIPAL	1,0	1,0	0,0
13,0	ASISTENT MEDICAL	S	1,0	PRINCIPAL	1,0	1,0	0,0
14,0	ASISTENT MEDICAL	S	1,0	PRINCIPAL	1,0	1,0	0,0
15,0	ASISTENT MEDICAL	PL	1,0	PRINCIPAL	1,0	1,0	0,0
16,0	ASISTENT MEDICAL	S	1,0	PRINCIPAL	1,0	1,0	0,0
17,0	ASISTENT MEDICAL	PL	1,0	PRINCIPAL	1,0	0,0	1,0
TOTAL ASISTENTE 3 TURE CAMERA DE GARDA			9,0		9,0	8,0	1,0
18,0	INFIRMIERA	M	1,0		1,0	1,0	0,0
19,0	INFIRMIERA	M	1,0		1,0	1,0	0,0
20,0	INFIRMIERA	M	1,0		1,0	1,0	0,0
21,0	INFIRMIERA	M	1,0		1,0	1,0	0,0
22,0	INFIRMIERA	G	1,0		1,0	0,0	1,0
TOTAL INFIRMIERE CAMERA DE GARDA			5,0		5,0	4,0	1,0
23,0	INGRIJITOARE	G	1,0		1,0	1,0	0,0
24,0	INGRIJITOARE	G	1,0		1,0	1,0	0,0
TOTAL INGRIJITOARE CAMERA DE GARDA			2,0		2,0	2,0	0,0
CAMERA GARDA PNEUMOLOGIE							
25,0	ASISTENT MEDICAL	PL	1,0	PRINCIPAL	1,0	1,0	0,0
26,0	ASISTENT MEDICAL	PL	1,0	PRINCIPAL	1,0	1,0	0,0
27,0	ASISTENT MEDICAL	PL	1,0	GENERALIST	1,0	0,0	1,0
TOTAL PERS.SANITAR MEDIU			3,0		3,0	2,0	1,0
SECTIA CLINICA DE BOLI INFECTIOASE ADULTI I - 65PATURI							
28,0	MEDIC SEF SECTIE	S	1,0	II	1,0	0,0	1,0
29,0	MEDIC	S	1,0	PRIMAR	1,0	1,0	0,0
30,0	MEDIC	S	1,0	SPECIALIST	1,0	1,0	0,0
30,5	MEDIC - As. Univ.	S	0,5	PRIMAR	0,5	0,5	0,0
31,5	MEDIC	S	1,0	PRIMAR	1,0	1,0	0,0
32,5	MEDIC	S	1,0	PRIMAR	1,0	1,0	0,0
TOTAL MEDICI			5,5		5,5	4,5	1,0
33,5	ASISTENT MEDICAL SEF	S	1,0	PRINCIPAL	1,0	1,0	0,0
34,5	ASISTENT MEDICAL	PL	1,0	PRINCIPAL	1,0	1,0	0,0
35,5	ASISTENT MEDICAL	PL	1,0	PRINCIPAL	1,0	1,0	0,0
36,5	ASISTENT MEDICAL	S	1,0	PRINCIPAL	1,0	1,0	0,0
37,5	ASISTENT MEDICAL	PL	1,0	PRINCIPAL	1,0	1,0	0,0
38,5	ASISTENT MEDICAL	S	1,0	PRINCIPAL	1,0	0,0	1,0
39,5	ASISTENT MEDICAL	S	1,0	PRINCIPAL	1,0	1,0	0,0
40,5	ASISTENT MEDICAL	PL	1,0	PRINCIPAL	1,0	1,0	0,0
41,5	ASISTENT MEDICAL	PL	1,0	PRINCIPAL	1,0	1,0	0,0
42,5	ASISTENT MEDICAL	PL	1,0	PRINCIPAL	1,0	1,0	0,0
43,5	ASISTENT MEDICAL	S	1,0	PRINCIPAL	1,0	1,0	0,0
44,5	ASISTENT MEDICAL	PL	1,0	PRINCIPAL	1,0	1,0	0,0
45,5	ASISTENT MEDICAL	S	1,0	GENERALIST	1,0	0,0	1,0
46,5	ASISTENT MEDICAL	S	1,0	PRINCIPAL	1,0	1,0	0,0
47,5	ASISTENT MEDICAL	PL	1,0	PRINCIPAL	1,0	1,0	0,0
48,5	ASISTENT MEDICAL	PL	1,0	PRINCIPAL	1,0	1,0	0,0
49,5	ASISTENT MEDICAL	PL	1,0	PRINCIPAL	1,0	1,0	0,0
50,5	ASISTENT MEDICAL	PL	1,0	PRINCIPAL	1,0	1,0	0,0

Nr. Crt.	FUNCTIA,GRAD SAU TREAPTA	Nivel studii	Cuquantum post	Grad sau Treapta	Numar posturi aprobate	Numar posturi ocupate	Numar posturi vacante
51,5	ASISTENT MEDICAL	PL	1,0	PRINCIPAL	1,0	1,0	0,0
TOTAL PERS.MEDIU TREI TURE			19,0		19,0	17,0	2,0
52,5	REGISTRATOR MEDICAL	M	1,0	DEBUTANT	1,0	0,0	1,0
TOTAL PERS.MEDIU POST FIX			1,0		1,0	0,0	1,0
53,5	INFIRMIERA	G	1,0		1,0	1,0	0,0
54,5	INFIRMIERA	G	1,0		1,0	1,0	0,0
55,5	INFIRMIERA	M	1,0		1,0	1,0	0,0
56,5	INFIRMIERA	G	1,0		1,0	0,0	1,0
57,5	INFIRMIERA	G	1,0		1,0	1,0	0,0
58,5	INFIRMIERA	G	1,0		1,0	1,0	0,0
59,5	INFIRMIERA	G	1,0		1,0	1,0	0,0
60,5	INFIRMIERA	M	1,0		1,0	1,0	0,0
61,5	INFIRMIERA	G	1,0		1,0	1,0	0,0
62,5	INFIRMIERA	G	1,0		1,0	1,0	0,0
63,5	INFIRMIERA	M	1,0		1,0	1,0	0,0
64,5	INFIRMIERA	M	1,0		1,0	1,0	0,0
65,5	INFIRMIERA	M	1,0		1,0	1,0	0,0
TOTAL INFIRMIERE			13,0		13,0	12,0	1,0
66,5	INGRIJITOARE	G	1,0		1,0	1,0	0,0
TOTAL INGRIJITOARE			1,0		1,0	1,0	0,0
COMPARTIMENT HIV/SIDA 15 PATURI							
67,5	MEDIC	S	1,0	SPECIALIST	1,0	1,0	0,0
TOTAL MEDICI			1,0		1,0	1,0	0,0
68,5	ASISTENT MEDICAL	S	1,0	PRINCIPAL	1,0	1,0	0,0
69,5	ASISTENT MEDICAL	PL	1,0	PRINCIPAL	1,0	1,0	0,0
70,5	ASISTENT MEDICAL	S	1,0	PRINCIPAL	1,0	1,0	0,0
71,5	ASISTENT MEDICAL	S	1,0	PRINCIPAL	1,0	1,0	0,0
72,5	ASISTENT MEDICAL	S	1,0	PRINCIPAL	1,0	1,0	0,0
73,5	ASISTENT MEDICAL	S	1,0	PRINCIPAL	1,0	1,0	0,0
74,5	ASISTENT MEDICAL	S	1,0	PRINCIPAL	1,0	1,0	0,0
TOTAL PERSONAL 3 TURE			7,0		7,0	7,0	0,0
75,5	INFIRMIERA	G	1,0		1,0	1,0	0,0
76,5	INFIRMIERA	G	1,0		1,0	1,0	0,0
77,5	INFIRMIERA	G	1,0		1,0	1,0	0,0
78,5	INFIRMIERA	G	1,0		1,0	1,0	0,0
79,5	INFIRMIERA	G	1,0		1,0	1,0	0,0
80,5	INFIRMIERA	G	1,0		1,0	1,0	0,0
TOTAL INFIRMIERE			6,0		6,0	6,0	0,0
SECTIA CLINICA BOLI INFECTIOASE ADULTI II - 65 PATURI							
81,5	MEDIC SEF SECTIE	S	1,0	II	1,0	1,0	0,0
82,5	MEDIC	S	1,0	SPECIALIST	1,0	1,0	0,0
83,5	MEDIC	S	1,0	PRIMAR	1,0	1,0	0,0
84,5	MEDIC	S	1,0	PRIMAR	1,0	1,0	0,0
85,5	MEDIC	S	1,0	PRIMAR	1,0	1,0	0,0
86,0	MEDIC - Sef lucr.	S	0,5	PRIMAR	0,5	0,5	0,0
TOTAL MEDICI			5,5		5,5	5,5	0,0
87,0	ASISTENT MEDICAL SEF	PL	1,0	PRINCIPAL	1,0	1,0	0,0
88,0	ASISTENT MEDICAL	PL	1,0	PRINCIPAL	1,0	0,0	1,0
89,0	ASISTENT MEDICAL	PL	1,0	PRINCIPAL	1,0	1,0	0,0
90,0	ASISTENT MEDICAL	PL	1,0	PRINCIPAL	1,0	1,0	0,0
91,0	ASISTENT MEDICAL	PL	1,0	PRINCIPAL	1,0	1,0	0,0
92,0	ASISTENT MEDICAL	S	1,0	PRINCIPAL	1,0	1,0	0,0
93,0	ASISTENT MEDICAL	PL	1,0	GENERALIST	1,0	1,0	0,0
94,0	ASISTENT MEDICAL	PL	1,0	PRINCIPAL	1,0	1,0	0,0
95,0	ASISTENT MEDICAL	S	1,0	PRINCIPAL	1,0	1,0	0,0
96,0	ASISTENT MEDICAL	S	1,0	PRINCIPAL	1,0	1,0	0,0
97,0	ASISTENT MEDICAL	S	1,0	GENERALIST	1,0	1,0	0,0
98,0	ASISTENT MEDICAL	S	1,0	PRINCIPAL	1,0	1,0	0,0
99,0	ASISTENT MEDICAL	S	1,0	PRINCIPAL	1,0	1,0	0,0
100,0	ASISTENT MEDICAL	PL	1,0	GENERALIST	1,0	1,0	0,0
101,0	ASISTENT MEDICAL	S	1,0	PRINCIPAL	1,0	1,0	0,0
102,0	ASISTENT MEDICAL	S	1,0	GENERALIST	1,0	1,0	0,0
103,0	ASISTENT MEDICAL	S	1,0	PRINCIPAL	1,0	1,0	0,0
104,0	ASISTENT MEDICAL	PL	1,0	GENERALIST	1,0	1,0	0,0
105,0	ASISTENT MEDICAL	PL	1,0	GENERALIST	1,0	1,0	0,0
106,0	ASISTENT MEDICAL	S	1,0	GENERALIST	1,0	0,0	1,0
107,0	ASISTENT MEDICAL	S	1,0	PRINCIPAL	1,0	0,0	1,0
TOTAL ASISTENTE 3 TURE			21,0		21,0	18,0	3,0
108,0	REGISTRATOR MEDICAL	M	1,0	DEBUTANT	1,0	0,0	1,0
TOTAL PERS.MEDIU POST FIX			1,0		1,0	0,0	1,0

Nr. Crt.	FUNCTIA,GRAD SAU TREAPTA	Nivel studii	Cuquantum post	Grad sau Treapta	Numar posturi aprobate	Numar posturi ocupate	Numar posturi vacante
109,0	INFIRMIERA	G	1,0		1,0	1,0	0,0
110,0	INFIRMIERA	M	1,0		1,0	0,0	1,0
111,0	INFIRMIERA	G	1,0		1,0	1,0	0,0
112,0	INFIRMIERA	G	1,0		1,0	0,0	1,0
113,0	INFIRMIERA	G	1,0		1,0	1,0	0,0
114,0	INFIRMIERA	G	1,0		1,0	1,0	0,0
115,0	INFIRMIERA	M	1,0		1,0	1,0	0,0
116,0	INFIRMIERA	M	1,0		1,0	1,0	0,0
117,0	INFIRMIERA	G	1,0		1,0	1,0	0,0
118,0	INFIRMIERA	G	1,0		1,0	1,0	0,0
119,0	INFIRMIERA	G	1,0		1,0	1,0	0,0
120,0	INFIRMIERA	G	1,0		1,0	1,0	0,0
TOTAL INFIRMIERE			12,0		12,0	10,0	2,0
121,0	INGRIJITOARE	G	1,0		1,0	1,0	0,0
122,0	INGRIJITOARE	G	1,0		1,0	1,0	0,0
TOTAL INGRIJITOARE			2,0		2,0	2,0	0,0
SECTIA CLINICA BOLI INFECTIOASE COPII - 60 PATURI							
123,0	MEDIC SEF SECTIE	S	1,0	II	1,0	0,0	1,0
124,0	MEDIC	S	1,0	SPECIALIST	1,0	1,0	0,0
125,0	MEDIC	S	1,0	SPECIALIST	1,0	1,0	0,0
126,0	MEDIC	S	1,0	PRIMAR	1,0	1,0	0,0
127,0	MEDIC	S	1,0	SPECIALIST	1,0	1,0	0,0
128,0	MEDIC	S	1,0	PRIMAR	1,0	1,0	0,0
TOTAL MEDICI			6,0		6,0	5,0	1,0
129,0	ASISTENT MEDICAL SEF	SSD	1,0	PRINCIPAL	1,0	1,0	0,0
130,0	ASISTENT MEDICAL	PL	1,0	PRINCIPAL	1,0	1,0	0,0
131,0	ASISTENT MEDICAL	PL	1,0	PRINCIPAL	1,0	1,0	0,0
132,0	ASISTENT MEDICAL	S	1,0	PRINCIPAL	1,0	1,0	0,0
133,0	ASISTENT MEDICAL	S	1,0	PRINCIPAL	1,0	1,0	0,0
134,0	ASISTENT MEDICAL	PL	1,0	PRINCIPAL	1,0	1,0	0,0
135,0	ASISTENT MEDICAL	PL	1,0	PRINCIPAL	1,0	1,0	0,0
136,0	ASISTENT MEDICAL	PL	1,0	PRINCIPAL	1,0	1,0	0,0
137,0	ASISTENT MEDICAL	S	1,0	GENERALIST	1,0	0,0	1,0
138,0	ASISTENT MEDICAL	PL	1,0	PRINCIPAL	1,0	1,0	0,0
139,0	ASISTENT MEDICAL	S	1,0	PRINCIPAL	1,0	0,0	1,0
140,0	ASISTENT MEDICAL	S	1,0	PRINCIPAL	1,0	0,0	1,0
141,0	ASISTENT MEDICAL	PL	1,0	PRINCIPAL	1,0	1,0	0,0
142,0	ASISTENT MEDICAL	PL	1,0	PRINCIPAL	1,0	1,0	0,0
143,0	ASISTENT MEDICAL	PL	1,0	PRINCIPAL	1,0	1,0	0,0
144,0	ASISTENT MEDICAL	PL	1,0	PRINCIPAL	1,0	1,0	0,0
145,0	ASISTENT MEDICAL	PL	1,0	PRINCIPAL	1,0	1,0	0,0
146,0	ASISTENT MEDICAL	PL	1,0	PRINCIPAL	1,0	1,0	0,0
147,0	ASISTENT MEDICAL	PL	1,0	PRINCIPAL	1,0	1,0	0,0
148,0	ASISTENT MEDICAL	S	1,0	PRINCIPAL	1,0	1,0	0,0
149,0	ASISTENT MEDICAL	PL	1,0	PRINCIPAL	1,0	1,0	0,0
TOTAL PERS.MED.TREI TURE			21,0		21,0	18,0	3,0
150,0	ASISTENT MEDICAL	S	1,0	PRINCIPAL	1,0	0,0	1,0
151,0	ASISTENT MEDICAL	PL	1,0	PRINCIPAL	1,0	1,0	0,0
152,0	ASISTENT MEDICAL	PL	1,0	PRINCIPAL	1,0	0,0	1,0
TOTAL PERS.MEDIU BIBERONERIE			3,0		3,0	1,0	2,0
153,0	REGISTRATOR MEDICAL	M	1,0		1,0	0,0	1,0
TOTAL PERS.MEDIU POST FIX			1,0		1,0	0,0	1,0
154,0	INFIRMIERA	M	1,0		1,0	1,0	0,0
155,0	INFIRMIERA	G	1,0		1,0	1,0	0,0
156,0	INFIRMIERA	G	1,0		1,0	1,0	0,0
157,0	INFIRMIERA	M	1,0		1,0	1,0	0,0
158,0	INFIRMIERA	G	1,0		1,0	1,0	0,0
159,0	INFIRMIERA	G	1,0		1,0	1,0	0,0
160,0	INFIRMIERA	G	1,0		1,0	1,0	0,0
161,0	INFIRMIERA	G	1,0		1,0	1,0	0,0
162,0	INFIRMIERA	M	1,0		1,0	1,0	0,0
163,0	INFIRMIERA	G	1,0		1,0	1,0	0,0
164,0	INFIRMIERA	G	1,0		1,0	1,0	0,0
165,0	INFIRMIERA	G	1,0		1,0	1,0	0,0
166,0	INFIRMIERA	M	1,0		1,0	1,0	0,0
167,0	INFIRMIERA	M	1,0		1,0	1,0	0,0
168,0	INFIRMIERA	M	1,0		1,0	1,0	0,0
169,0	INFIRMIERA	G	1,0		1,0	1,0	0,0
170,0	INFIRMIERA	G	1,0		1,0	1,0	0,0
TOTAL INFIRMIERE			17,0		17,0	17,0	0,0
171,0	INGRIJITOARE	G	1,0		1,0	1,0	0,0
172,0	INGRIJITOARE	G	1,0		1,0	1,0	0,0

Nr. Crt.	FUNCTIA,GRAD SAU TREAPTA	Nivel studii	Quantum post	Grad sau Treapta	Numar posturi aprobate	Numar posturi ocupate	Numar posturi vacante
173.0	INGRIJITOARE	G	1,0		1,0	1,0	0,0
174.0	INGRIJITOARE	G	1,0		1,0	1,0	0,0
175.0	INGRIJITOARE	G	1,0		1,0	1,0	0,0
176.0	INGRIJITOARE	G	1,0		1,0	1,0	0,0
TOTAL INGRIJITOARE			6,0		6,0	6,0	0,0
AMBULATORIU INTEGRAT BOLI INFECTIOASE							
Activitatea este asigurata de personalul unitatii							
COMPARTIMENT ATI - 10 PATURI							
177.0	MEDIC	S	1,0	SPECIALIST	1,0	1,0	0,0
178.0	MEDIC	S	1,0	SPECIALIST	1,0	1,0	0,0
179.0	MEDIC	S	1,0	SPECIALIST	1,0	1,0	0,0
TOTAL PERS.SUPERIOR			3,0		3,0	3,0	0,0
180.0	ASISTENT MEDICAL	S	1,0	PRINCIPAL	1,0	1,0	0,0
181.0	ASISTENT MEDICAL	S	1,0	PRINCIPAL	1,0	1,0	0,0
182.0	ASISTENT MEDICAL	S	1,0	PRINCIPAL	1,0	0,0	1,0
183.0	ASISTENT MEDICAL	PL	1,0	PRINCIPAL	1,0	1,0	0,0
184.0	ASISTENT MEDICAL	S	1,0	PRINCIPAL	1,0	1,0	0,0
185.0	ASISTENT MEDICAL	PL	1,0	PRINCIPAL	1,0	1,0	0,0
186.0	ASISTENT MEDICAL	PL	1,0	PRINCIPAL	1,0	1,0	0,0
187.0	ASISTENT MEDICAL	S	1,0	PRINCIPAL	1,0	1,0	0,0
188.0	ASISTENT MEDICAL	S	1,0	GENERALIST	1,0	1,0	0,0
189.0	ASISTENT MEDICAL	S	1,0	PRINCIPAL	1,0	1,0	0,0
190.0	ASISTENT MEDICAL	PL	1,0	PRINCIPAL	1,0	1,0	0,0
191.0	ASISTENT MEDICAL	S	1,0	PRINCIPAL	1,0	1,0	0,0
192.0	ASISTENT MEDICAL	PL	1,0	PRINCIPAL	1,0	0,0	1,0
193.0	ASISTENT MEDICAL	PL	1,0	PRINCIPAL	1,0	1,0	0,0
TOTAL PERS.SAN.MEDIU TREI TURE			14,0		14,0	12,0	2,0
194.0	INFIRMIERA	G	1,0		1,0	1,0	0,0
195.0	INFIRMIERA	M	1,0		1,0	1,0	0,0
196.0	INFIRMIERA	G	1,0		1,0	1,0	0,0
197.0	INFIRMIERA	G	1,0		1,0	1,0	0,0
198.0	INFIRMIERA	G	1,0		1,0	1,0	0,0
199.0	INFIRMIERA	M	1,0		1,0	1,0	0,0
200.0	INFIRMIERA	G	1,0		1,0	0,0	1,0
201.0	INFIRMIERA	G	1,0		1,0	1,0	0,0
TOTAL INFIRMIERE			8,0		8,0	7,0	1,0
SECTIA CLINICA DE PNEUMOLOGIE ADULTI I : 75 PATURI din care COMP. TBC 30 paturi SI PNEUMOLOGIE CRONICI 4 PATURI							
202.0	MEDIC SEF SECTIE	S	1,0	II	1,0	0,0	1,0
203.0	MEDIC	S	1,0	PRIMAR	1,0	1,0	0,0
204.0	MEDIC	S	1,0	PRIMAR	1,0	1,0	0,0
205.0	MEDIC	S	1,0	PRIMAR	1,0	1,0	0,0
206.0	MEDIC	S	1,0	PRIMAR	1,0	1,0	0,0
207.0	MEDIC	S	1,0	PRIMAR	1,0	1,0	0,0
207.5	MEDIC	S	0,5	PRIMAR	0,5	0,5	0,0
TOTAL PERS. SANITAR SUPERIOR			6,5		7,0	6,0	1,0
208.5	ASISTENT MEDICAL SEF	PL	1,0	PRINCIPAL	1,0	0,0	1,0
209.5	ASISTENT MEDICAL	S	1,0	PRINCIPAL	1,0	1,0	0,0
210.5	ASISTENT MEDICAL	S	1,0	PRINCIPAL	1,0	1,0	0,0
211.5	ASISTENT MEDICAL	PL	1,0	PRINCIPAL	1,0	1,0	0,0
212.5	ASISTENT MEDICAL	PL	1,0	PRINCIPAL	1,0	1,0	0,0
213.5	ASISTENT MEDICAL	PL	1,0	PRINCIPAL	1,0	0,0	1,0
214.5	KINETOTERAPEUT	S	1,0	PRINCIPAL	1,0	1,0	0,0
215.5	ASISTENT MEDICAL	PL	1,0	PRINCIPAL	1,0	1,0	0,0
216.5	ASISTENT MEDICAL	S	1,0	PRINCIPAL	1,0	1,0	0,0
217.5	ASISTENT MEDICAL	S	1,0	PRINCIPAL	1,0	1,0	0,0
218.5	ASISTENT MEDICAL	S	1,0	PRINCIPAL	1,0	0,0	1,0
219.5	ASISTENT MEDICAL	PL	1,0	PRINCIPAL	1,0	1,0	0,0
220.5	ASISTENT MEDICAL	PL	1,0	PRINCIPAL	1,0	1,0	0,0
221.5	ASISTENT MEDICAL	S	1,0	PRINCIPAL	1,0	1,0	0,0
222.5	ASISTENT MEDICAL	PL	1,0	PRINCIPAL	1,0	1,0	0,0
223.5	ASISTENT MEDICAL	S	1,0	PRINCIPAL	1,0	1,0	0,0
224.5	ASISTENT MEDICAL	S	1,0	PRINCIPAL	1,0	1,0	0,0
225.5	ASISTENT MEDICAL	PL	1,0	PRINCIPAL	1,0	1,0	0,0
226.5	ASISTENT MEDICAL	PL	1,0	GENERALIST	1,0	0,0	1,0
TOTAL PERS.SAN.MEDIU TREI TURE			19,0		19,0	15,0	4,0
227.5	ASISTENT MEDICAL	PL	1,0	PRINCIPAL	1,0	1,0	0,0
228.5	ASISTENT MEDICAL	S	1,0	GENERALIST	1,0	0,0	1,0
229.5	REGISTRATOR MEDICAL	M	1,0	DEBUTANT	1,0	0,0	1,0
TOTAL PERSONAL MED.POST FIX			3,0		3,0	1,0	2,0
230.5	INFIRMIERA	G	1,0		1,0	1,0	0,0
231.5	INFIRMIERA	G	1,0		1,0	1,0	0,0
232.5	INFIRMIERA	G	1,0	DEBUTANT	1,0	1,0	0,0
233.5	INFIRMIERA	G	1,0		1,0	1,0	0,0
234.5	INFIRMIERA	G	1,0		1,0	1,0	0,0
235.5	INFIRMIERA	G	1,0		1,0	1,0	0,0

Nr. Crt.	FUNCTIA,GRAD SAU TREAPTA	Nivel studii	Quantum post	Grad sau Treapta	Numar posturi aprobate	Numar posturi ocupate	Numar posturi vacante
236,5	INFIRMIERA	G	1,0		1,0	1,0	0,0
237,5	INFIRMIERA	G	1,0		1,0	1,0	0,0
238,5	INFIRMIERA	G	1,0		1,0	1,0	0,0
239,5	INFIRMIERA	G	1,0		1,0	0,0	1,0
240,5	INFIRMIERA	G	1,0		1,0	0,0	1,0
TOTAL INFIRMIERE			11,0		11,0	9,0	2,0
COMPARTIMENT ENDOSCOPIE BRONSICA							
Activitatea este asigurata de personalul unitatii							
SECTIA CLINICA DE PNEUMOLOGIE ADULTI II : 75 PATURI din care COMP. TBC 30 paturi SI PNEUMOLOGIE CRONICI 4 PATURI							
241,5	MEDIC SEF SECTIE	S	1,0	II	1,0	1,0	0,0
242,5	MEDIC	S	1,0	PRIMAR	1,0	1,0	0,0
243,5	MEDIC	S	1,0	PRIMAR	1,0	1,0	0,0
244,5	MEDIC	S	1,0	PRIMAR	1,0	1,0	0,0
245,0	MEDIC	S	0,5	PRIMAR	0,5	0,5	0,0
246,0	MEDIC	S	1,0	PRIMAR	1,0	0,0	1,0
TOTAL PERS.SANIT.SUPERIOR			5,5		5,5	4,5	1,0
247,0	ASISTENT MEDICAL SEF	S	1,0	PRINCIPAL	1,0	1,0	0,0
248,0	ASISTENT MEDICAL	PL	1,0	PRINCIPAL	1,0	1,0	0,0
249,0	ASISTENT MEDICAL	S	1,0	PRINCIPAL	1,0	1,0	0,0
250,0	ASISTENT MEDICAL	PL	1,0	GENERALIST	1,0	1,0	0,0
251,0	ASISTENT MEDICAL	S	1,0	PRINCIPAL	1,0	1,0	0,0
252,0	ASISTENT MEDICAL	S	1,0	PRINCIPAL	1,0	1,0	0,0
253,0	ASISTENT MEDICAL	S	1,0	PRINCIPAL	1,0	1,0	0,0
254,0	ASISTENT MEDICAL	S	1,0	PRINCIPAL	1,0	1,0	0,0
255,0	ASISTENT MEDICAL	S	1,0	PRINCIPAL	1,0	1,0	0,0
256,0	ASISTENT MEDICAL	S	1,0	PRINCIPAL	1,0	1,0	0,0
257,0	ASISTENT MEDICAL	S	1,0	PRINCIPAL	1,0	1,0	0,0
258,0	ASISTENT MEDICAL	S	1,0	PRINCIPAL	1,0	1,0	0,0
259,0	ASISTENT MEDICAL	PL	1,0	PRINCIPAL	1,0	1,0	0,0
260,0	ASISTENT MEDICAL	PL	1,0	GENERALIST	1,0	0,0	1,0
261,0	ASISTENT MEDICAL	PL	1,0	GENERALIST	1,0	0,0	1,0
262,0	KINETOTERAPEUT	S	1,0	DEBUTANT	1,0	1,0	0,0
TOTAL PERS.MED.TREI TURE			16,0		16,0	14,0	2,0
263,0	ASISTENT MEDICAL	S	1,0	PRINCIPAL	1,0	1,0	0,0
264,0	ASISTENT MEDICAL	PL	1,0	PRINCIPAL	1,0	1,0	0,0
265,0	REGISTRATOR MEDICAL	M	1,0	PRINCIPAL	1,0	0,0	1,0
TOTAL PERS.MED.POST FIX			3,0		3,0	2,0	1,0
266,0	INFIRMIERA	G	1,0		1,0	1,0	0,0
267,0	INFIRMIERA	M	1,0		1,0	0,0	1,0
268,0	INFIRMIERA	M	1,0		1,0	1,0	0,0
269,0	INFIRMIERA	G	1,0		1,0	1,0	0,0
270,0	INFIRMIERA	G	1,0		1,0	1,0	0,0
271,0	INFIRMIERA	G	1,0		1,0	1,0	0,0
272,0	INFIRMIERA	M	1,0		1,0	1,0	0,0
273,0	INFIRMIERA	G	1,0		1,0	1,0	0,0
274,0	INFIRMIERA	M	1,0		1,0	1,0	0,0
275,0	INFIRMIERA	G	1,0		1,0	0,0	1,0
TOTAL INFIRMIERE			10,0		10,0	8,0	2,0
276,0	INGRIJITOARE	G	1,0		1,0	1,0	0,0
277,0	INGRIJITOARE	G	1,0		1,0	1,0	0,0
TOTAL INGRIJITOARE			2,0		2,0	2,0	0,0
SECTIA CLINICA DE PNEUMOLOGIE COPII : 45 PATURI din care COMP.TBC 26 paturi							
278,0	MEDIC SEF SECTIE	S	1,0	II	1,0	0,0	1,0
279,0	MEDIC	S	1,0	PRIMAR	1,0	1,0	0,0
280,0	MEDIC	S	1,0	PRIMAR	1,0	1,0	0,0
281,0	MEDIC	S	1,0	PRIMAR	1,0	1,0	0,0
282,0	MEDIC	S	1,0	SPECIALIST	1,0	1,0	0,0
TOTAL MEDICI			5,0		5,0	4,0	1,0
283,0	ASISTENT MEDICAL SEF	S	1,0	PRINCIPAL	1,0	1,0	0,0
284,0	ASISTENT MEDICAL	S	1,0	PRINCIPAL	1,0	1,0	0,0
285,0	ASISTENT MEDICAL	PL	1,0	PRINCIPAL	1,0	1,0	0,0
286,0	ASISTENT MEDICAL	PL	1,0	PRINCIPAL	1,0	0,0	1,0
287,0	ASISTENT MEDICAL	S	1,0	PRINCIPAL	1,0	1,0	0,0
288,0	ASISTENT MEDICAL	S	1,0	PRINCIPAL	1,0	0,0	1,0
289,0	ASISTENT MEDICAL	PL	1,0	PRINCIPAL	1,0	1,0	0,0
290,0	ASISTENT MEDICAL	S	1,0	PRINCIPAL	1,0	1,0	0,0
291,0	ASISTENT MEDICAL	S	1,0	PRINCIPAL	1,0	1,0	0,0
292,0	ASISTENT MEDICAL	S	1,0	PRINCIPAL	1,0	1,0	0,0
293,0	ASISTENT MEDICAL	S	1,0	PRINCIPAL	1,0	1,0	0,0
294,0	ASISTENT MEDICAL	S	1,0	PRINCIPAL	1,0	1,0	0,0
295,0	ASISTENT MEDICAL	S	1,0	PRINCIPAL	1,0	1,0	0,0
TOTAL PERS.MED.TREI TURE			13,0		13,0	11,0	2,0

Nr. Crt.	FUNCTIA,GRAD SAU TREAPTA	Nivel studii	Cuquantum post	Grad sau Treapta	Numar posturi aprobate	Numar posturi ocupate	Numar posturi vacante
296,0	INFIRMIERA	G	1,0		1,0	0,0	1,0
297,0	INFIRMIERA	M	1,0		1,0	1,0	0,0
298,0	INFIRMIERA	G	1,0		1,0	1,0	0,0
299,0	INFIRMIERA	G	1,0		1,0	1,0	0,0
300,0	INFIRMIERA	G	1,0		1,0	0,0	1,0
301,0	INFIRMIERA	G	1,0		1,0	1,0	0,0
302,0	INFIRMIERA	G	1,0		1,0	1,0	0,0
303,0	INFIRMIERA	G	1,0		1,0	1,0	0,0
304,0	INFIRMIERA	M	1,0		1,0	1,0	0,0
305,0	INFIRMIERA	G	1,0		1,0	1,0	0,0
TOTAL INFIRMIERE			10,0		10,0	8,0	2,0
CABINET BOLI INFECTIOASE DISPENSARIZARE HEPATITA STERILIZARE							
306,0	ASISTENT MEDICAL	S	1,0	PRINCIPAL	1,0	1,0	0,0
307,0	ASISTENT MEDICAL	PL	1,0	PRINCIPAL	1,0	1,0	0,0
TOTAL PERS.MED.			2,0		2,0	2,0	0,0
CABINET BOLI INFECTIOASE VACCINARE ANTIRABICA							
Activitatea este asigurata de personalul unitatii							
CABINET O.R.L.							
308,0	MEDIC	S	1,0	PRIMAR	1,0	1,0	0,0
TOTAL PERSONAL SANITAR SUPERIOR			1,0		1,0	1,0	0,0
309,0	ASISTENT MEDICAL	S	1,0	PRINCIPAL	1,0	1,0	0,0
TOTAL PERSONAL MEDIU			1,0		1,0	1,0	0,0
CABINET CARDIOLOGIE							
310,0	MEDIC	S	1,0	PRIMAR	1,0	1,0	0,0
TOTAL PERSONAL SANITAR SUPERIOR			1,0		1,0	1,0	0,0
311,0	ASISTENT MEDICAL	PL	1,0	PRINCIPAL	1,0	1,0	0,0
TOTAL PERS. MED			1,0		1,0	1,0	0,0
CABINET NEUROLOGIE							
312,0	MEDIC	S	1,0	SPECIALIST	1,0	0,0	1,0
TOTAL PERSONAL SANITAR SUPERIOR			1,0		1,0	0,0	1,0
CABINET DIABET ZAHARAT, NUTRITIE SI BOLI METABOLICE							
313,0	MEDIC	S	1,0	SPECIALIST	1,0	0,0	1,0
TOTAL PERSONAL SANITAR SUPERIOR			1,0		1,0	0,0	1,0
SPITALIZARE DE ZI HIV/SIDA 25 PATURI							
314,0	MEDIC	S	1,0	PRIMAR	1,0	1,0	0,0
315,0	MEDIC SEF SECTIE	S	1,0	II	1,0	1,0	0,0
TOTAL PERSONAL SANITAR SUPERIOR			2,0		2,0	2,0	0,0
316,0	PSIHOLOG	S	1,0	PRINCIPAL	1,0	1,0	0,0
317,0	ASISTENT MEDICA SOCIAL	S	1,0	PRINCIPAL	1,0	1,0	0,0
TOTAL ALT PERSONAL SANITAR SUPERIOR			2,0		2,0	2,0	0,0
318,0	ASISTENT MEDICAL SEF	S	1,0	PRINCIPAL	1,0	1,0	0,0
319,0	ASISTENT MEDICAL	S	1,0	PRINCIPAL	1,0	1,0	0,0
320,0	ASISTENT MEDICAL	S	1,0	PRINCIPAL	1,0	1,0	0,0
321,0	ASISTENT MEDICAL	S	1,0	PRINCIPAL	1,0	1,0	0,0
322,0	ASISTENT MEDICAL	S	1,0	PRINCIPAL	1,0	1,0	0,0
323,0	REGISTRATOR MEDICAL	M	1,0		1,0	1,0	0,0
324,0	INGRIJITOARE	G	1,0		1,0	1,0	0,0
TOTAL PERS.SAN MEDIU POST FIX			7,0		7,0	7,0	0,0
CABINET DERMATOVENEROLOGIE HIV/SIDA							
325,0	MEDIC	S	1,0	PRIMAR	1,0	1,0	0,0
TOTAL PERSONAL SANITAR SUPERIOR			1,0		1,0	1,0	0,0
CABINET STOMATOLOGIE HIV/SIDA							
326,0	MEDIC	S	1,0	STOMATOLOG	1,0	1,0	0,0
327,0	MEDIC	S	1,0	STOMATOLOG	1,0	1,0	0,0
328,0	ASISTENT MEDICAL	S	1,0	GENERALIST	1,0	0,0	1,0
TOTAL PERSONAL SANITAR SUPERIOR			3,0		3,0	2,0	1,0
DISPENSAR T.B.C.							
329,0	MEDIC	S	1,0	SPECIALIST	1,0	1,0	0,0
330,0	MEDIC	S	1,0	PRIMAR	1,0	1,0	0,0
331,0	MEDIC	S	1,0	PRIMAR	1,0	1,0	0,0
332,0	MEDIC	S	1,0	PRIMAR	1,0	1,0	0,0
333,0	MEDIC	S	1,0	PRIMAR	1,0	1,0	0,0
334,0	MEDIC coordonator	S	1,0	PRIMAR	1,0	1,0	0,0
335,0	MEDIC	S	1,0	PRIMAR	1,0	1,0	0,0
TOTAL PERS.SAN.SUP			7,0		7,0	7,0	0,0

Nr. Crt.	FUNCTIA,GRAD SAU TREAPTA	Nivel studii	Quantum post	Grad sau Treapta	Numar posturi aprobate	Numar posturi ocupate	Numar posturi vacante
336,0	ASISTENT MEDICAL	S	1,0	PRINCIPAL	1,0	1,0	0,0
337,0	ASISTENT MEDICAL	S	1,0	PRINCIPAL	1,0	1,0	0,0
338,0	ASISTENT MEDICAL	S	1,0	PRINCIPAL	1,0	1,0	0,0
339,0	ASISTENT MEDICAL	PL	1,0	PRINCIPAL	1,0	1,0	0,0
340,0	ASISTENT MEDICAL coordonator	S	1,0	PRINCIPAL	1,0	1,0	0,0
341,0	ASISTENT MEDICAL	S	1,0	PRINCIPAL	1,0	1,0	0,0
342,0	ASISTENT MEDICAL	S	1,0	PRINCIPAL	1,0	1,0	0,0
343,0	ASISTENT MEDICAL	S	1,0	PRINCIPAL	1,0	1,0	0,0
344,0	ASISTENT MEDICAL	PL	1,0	PRINCIPAL	1,0	1,0	0,0
345,0	ASISTENT MEDICAL	S	1,0	PRINCIPAL	1,0	1,0	0,0
346,0	REGISTRATOR MEDICAL	M	1,0	PRINCIPAL	1,0	1,0	0,0
347,0	REGISTRATOR MEDICAL	M	1,0	PRINCIPAL	1,0	1,0	0,0
348,0	ASISTENT MEDICAL	PL	1,0	PRINCIPAL	1,0	1,0	0,0
349,0	INFORMATICIAN	S	1,0		1,0	1,0	0,0
TOTAL PERS.SANIT.MEDIU			14,0		14,0	14,0	0,0
350,0	INGRIJITOARE	G	1,0		1,0	1,0	0,0
351,0	INGRIJITOARE	M	1,0		1,0	1,0	0,0
TOTAL INGRIJITOARE			2,0		2,0	2,0	0,0
CABINET EXPLORARI FUNCTIONALE							
352,0	ASISTENT MEDICAL	PL	1,0	PRINCIPAL	1,0	1,0	0,0
TOTAL EXP.FUNCT			1,0		1,0	1,0	0,0
LABORATOR ANALIZE MEDICALE							
353,0	MEDIC SEF LABORATOR	S	1,0	II	1,0	1,0	0,0
354,0	MEDIC	S	1,0	PRIMAR	1,0	1,0	0,0
355,0	MEDIC	S	1,0	PRIMAR	1,0	1,0	0,0
356,0	MEDIC	S	1,0	PRIMAR	1,0	1,0	0,0
357,0	MEDIC	S	1,0	PRIMAR	1,0	1,0	0,0
358,0	MEDIC	S	1,0	PRIMAR	1,0	1,0	0,0
359,0	MEDIC	S	1,0	SPECIALIST	1,0	0,0	1,0
TOTAL PERSONAL SANITAR SUPERIOR			7,0		7,0	6,0	1,0
360,0	BIOLOG	S	1,0	PRINCIPAL	1,0	1,0	0,0
361,0	BIOLOG	S	1,0	PRINCIPAL	1,0	0,0	1,0
TOTAL ALT PERS.SUPERIOR			2,0		2,0	1,0	1,0
362,0	ASISTENT LABORATOR	PL	1,0	PRINCIPAL	1,0	1,0	0,0
363,0	ASISTENT LABORATOR	PL	1,0	PRINCIPAL	1,0	1,0	0,0
364,0	ASISTENT LABORATOR	PL	1,0	PRINCIPAL	1,0	0,0	1,0
365,0	ASISTENT LABORATOR	PL	1,0	PRINCIPAL	1,0	1,0	0,0
366,0	ASISTENT LABORATOR	S	1,0	PRINCIPAL	1,0	1,0	0,0
367,0	ASISTENT LABORATOR	PL	1,0	PRINCIPAL	1,0	1,0	0,0
368,0	ASISTENT LABORATOR	PL	1,0	PRINCIPAL	1,0	1,0	0,0
369,0	ASISTENT LABORATOR	PL	1,0	PRINCIPAL	1,0	1,0	0,0
370,0	ASISTENT LABORATOR	S	1,0	PRINCIPAL	1,0	1,0	0,0
371,0	ASISTENT LABORATOR	S	1,0	PRINCIPAL	1,0	1,0	0,0
372,0	ASISTENT LABORATOR	PL	1,0	PRINCIPAL	1,0	1,0	0,0
373,0	ASISTENT LABORATOR SEF	PL	1,0	PRINCIPAL	1,0	1,0	0,0
374,0	ASISTENT LABORATOR	PL	1,0	PRINCIPAL	1,0	1,0	0,0
375,0	ASISTENT LABORATOR	S	1,0	PRINCIPAL	1,0	1,0	0,0
376,0	ASISTENT LABORATOR	PL	1,0	PRINCIPAL	1,0	1,0	0,0
377,0	ASISTENT MEDICAL	PL	1,0	PRINCIPAL	1,0	1,0	0,0
378,0	REGISTRATOR MEDICAL	M	1,0		1,0	1,0	0,0
TOTAL PERS.SANITAR MEDIU			17,0		17,0	16,0	1,0
379,0	INGRIJITOARE	G	1,0		1,0	1,0	0,0
380,0	INGRIJITOARE	G	1,0		1,0	1,0	0,0
TOTAL INGRIJITOARE CURATENIE			2,0		2,0	2,0	0,0
COMPARTIMENT BK							
381,0	MEDIC	S	1,0	PRIMAR	1,0	1,0	0,0
382,0	MEDIC	S	1,0	SPECIALIST	1,0	1,0	0,0
383,0	MEDIC	S	1,0	SPECIALIST	1,0	0,0	1,0
TOTAL PERS.SAN.SUP			3,0		3,0	2,0	1,0
384,0	BIOLOG	S	1,0	PRINCIPAL	1,0	1,0	0,0
385,0	BIOLOG	S	1,0	SPECIALIST	1,0	1,0	0,0
386,0	BIOLOG	S	1,0		1,0	1,0	0,0
TOTAL ALT PERS.SUPERIOR			3,0		3,0	3,0	0,0
387,0	ASISTENT LABORATOR	PL	1,0	PRINCIPAL	1,0	1,0	0,0
388,0	ASISTENT LABORATOR	S	1,0	PRINCIPAL	1,0	1,0	0,0
TOTAL PERS.SANIT. POST FIX			2,0		2,0	2,0	0,0
389,0	INGRIJITOARE	G	1,0		1,0	1,0	0,0
TOTAL INGRIJITOARE			1,0		1,0	1,0	0,0
LABORATOR RADIOLOGIE SI IMAGISTICA MEDICALA							
390,0	MEDIC SEF LABORATOR	S	1,0	II	1,0	0,0	1,0
391,0	MEDIC	S	1,0	PRIMAR	1,0	1,0	0,0

Nr. Crt.	FUNCTIA,GRAD SAU TREAPTA	Nivel studii	Quantum post	Grad sau Treapta	Numar posturi aprobate	Numar posturi ocupate	Numar posturi vacante
392,0	MEDIC	S	1,0	SPECIALIST	1,0	0,0	1,0
392,5	MEDIC	S	0,5	PRIMAR	0,5	0,0	0,5
393,5	MEDIC (TBC)	S	1,0	PRIMAR	1,0	1,0	0,0
394,5	MEDIC (TBC)	S	1,0	PRIMAR	1,0	1,0	0,0
TOTAL PERS.SANIT.SUPERIOR			5,5		5,5	3,0	2,5
395,5	FIZICIAN	S	1,0	FIZICIAN	1,0	1,0	0,0
TOTAL ALT PERS. SANIT. SUPERIOR			1,0		1,0	1,0	0,0
396,5	ASISTENT RADIOLOGIE	PL	1,0	PRINCIPAL	1,0	1,0	0,0
397,5	ASISTENT RADIOLOGIE	PL	1,0	PRINCIPAL	1,0	1,0	0,0
398,5	ASISTENT RADIOLOGIE(TBC)	PL	1,0	PRINCIPAL	1,0	1,0	0,0
399,5	ASISTENT RADIOLOGIE(TBC)	PL	1,0	PRINCIPAL	1,0	1,0	0,0
400,5	ASISTENT RADIOLOGIE(TBC)	PL	1,0	PRINCIPAL	1,0	1,0	0,0
401,5	ASISTENT RADIOLOGIE(TBC)	PL	1,0	PRINCIPAL	1,0	1,0	0,0
402,5	ASISTENT RADIOLOGIE(TBC)	PL	1,0	PRINCIPAL	1,0	1,0	0,0
403,5	ASISTENT RADIOLOGIE(TBC)	PL	1,0	PRINCIPAL	1,0	1,0	0,0
404,5	ASISTENT RADIOLOGIE	S	1,0	DEBUTANT	1,0	0,0	1,0
405,5	ASISTENT RADIOLOGIE	S	1,0	GENERALIST	1,0	0,0	1,0
406,5	ASISTENT MEDICAL	S	1,0	PRINCIPAL	1,0	0,0	1,0
407,5	ASISTENT MEDICAL	S	1,0	GENERALIST	1,0	0,0	1,0
408,5	ASISTENT MEDICAL	PL	1,0	PRINCIPAL	1,0	0,0	1,0
409,5	ASISTENT MEDICAL	PL	1,0	GENERALIST	1,0	0,0	1,0
TOTAL PERS.SANIT.MEDIU			14,0		14,0	8,0	6,0
410,5	INGRIJITOARE	G	1,0		1,0	1,0	0,0
TOTAL INGRIJITOARE			1,0		1,0	1,0	0,0
LABORATOR ANATOMIE PATOLOGICA							
411,5	MEDIC	S	1,0	PRIMAR	1,0	1,0	0,0
412,0	MEDIC	S	0,5	SPECIALIST	0,5	0,5	0,0
TOTAL PERS.SANIT.SUPERIOR			1,5		1,5	1,5	0,0
413,0	ASISTENT LABORATOR	S	1,0	PRINCIPAL	1,0	1,0	0,0
414,0	ASISTENT LABORATOR autopsier	PL	1,0	PRINCIPAL	1,0	1,0	0,0
TOTAL PERS.MED.			2,0		2,0	2,0	0,0
415,0	INGRIJITOARE	G	1,0		1,0	1,0	0,0
TOTAL INGRIJITOARE			1,0		1,0	1,0	0,0
MEDIC INTREPRINDERE							
416,0	MEDIC	S	1,0	SPECIALIST	1,0	1,0	0,0
TOTAL MED.INTREPRINDERE			1,0		1,0	1,0	0,0
FARMACIE							
417,0	FARMACIST SEF	S	1,0	II	1,0	1,0	0,0
418,0	FARMACIST	S	1,0		1,0	0,0	1,0
419,0	FARMACIST	S	1,0	PRIMAR	1,0	1,0	0,0
420,0	FARMACIST	S	1,0	SPECIALIST	1,0	1,0	0,0
TOTAL FARMACISTI			4,0		4,0	3,0	1,0
421,0	ASISTENT FARMACIE	PL	1,0	PRINCIPAL	1,0	1,0	0,0
422,0	ASISTENT FARMACIE	PL	1,0	PRINCIPAL	1,0	1,0	0,0
423,0	ASISTENT FARMACIE	S	1,0	PRINCIPAL	1,0	1,0	0,0
424,0	ASISTENT FARMACIE	PL	1,0	PRINCIPAL	1,0	1,0	0,0
425,0	ASISTENT FARMACIE	PL	1,0	GENERALIST	1,0	1,0	0,0
TOTAL PERSONAL MEDIU			5,0		5,0	5,0	0,0
426,0	INGRIJITOARE	G	1,0		1,0	0,0	1,0
TOTAL INGRIJITOARE			1,0		1,0	0,0	1,0
APARAT FUNCTIONAL							
SERVICIU RESURSE UMANE							
427,0	ŞEF SERVICIU	S	1,0	II	1,0	1,0	0,0
428,0	ECONOMIST	S	1,0	IA	1,0	1,0	0,0
429,0	ECONOMIST	S	1,0	IA	1,0	1,0	0,0
430,0	ECONOMIST	S	1,0	I	1,0	1,0	0,0
431,0	ECONOMIST	S	1,0	I	1,0	1,0	0,0
TOTAL SERVICIU RESURSE UMANE			5,0		5,0	5,0	0,0
BIROU INFORMATICA							
432,0	ŞEF BIROU	S	1,0	II	1,0	1,0	0,0
433,0	ANALIST PROGRAMATOR	S	1,0	IA	1,0	1,0	0,0
434,0	ANALIST PROGRAMATOR	S	1,0	IA	1,0	1,0	0,0
TOTAL INFORMATICA			3,0		3,0	3,0	0,0
SERVICIU STATISTICA ŞI EVALUARE MEDICALA							
435,0	ŞEF SERVICIU	S	1,0	II	1,0	0,0	1,0
436,0	OPERATOR CONTROLOR DATE	M	1,0	I	1,0	1,0	0,0
437,0	OPERATOR CONTROLOR DATE	M	1,0	I	1,0	1,0	0,0
438,0	ECONOMIST	S	1,0	IA	1,0	1,0	0,0
439,0	REFERENT	M	1,0	IA	1,0	1,0	0,0

Nr. Crt.	FUNCTIA,GRAD SAU TREAPTA	Nivel studii	Cuquantum post	Grad sau Treapta	Numar posturi aprobate	Numar posturi ocupate	Numar posturi vacante
440,0	ECONOMIST	S	1,0	IA	1,0	1,0	0,0
441,0	INFORMATICIAN	S	1,0	I	1,0	1,0	0,0
442,0	ECONOMIST	S	1,0	II	1,0	1,0	0,0
443,0	ECONOMIST	S	1,0	IA	1,0	1,0	0,0
TOTAL SERVICIU STATISTICĂ ȘI EVALUARE MEDICALĂ			9,0		9,0	8,0	1,0
SERVICIU MANAGEMENT AL CALITĂȚII SERVICIILOR DE SANATATE							
444,0	ŞEF SERVICIU	S	1,0	I	1,0	0,0	1,0
445,0	MEDIC	S	1,0	SPECIALIST	1,0	0,0	1,0
446,0	REFERENT DE SPECIALITATE	S	1,0	I	1,0	0,0	1,0
447,0	REFERENT DE SPECIALITATE	S	1,0	IA	1,0	1,0	0,0
448,0	REFERENT DE SPECIALITATE	S	1,0	I	1,0	1,0	0,0
449,0	REFERENT DE SPECIALITATE	S	1,0	IA	1,0	1,0	0,0
450,0	REFERENT DE SPECIALITATE	S	1,0	II	1,0	0,0	1,0
TOTAL SERVICIU MANAGEMENT AL CALITĂȚII SERVICIILOR DE SAN			7,0		7,0	3,0	4,0
COMPARTIMENT JURIDIC							
451,0	CONSILIER JURIDIC	S	1,0	IA	1,0	1,0	0,0
TOTAL COMP JURIDIC			1,0		1,0	1,0	0,0
COMPARTIMENT AUDIT PUBLIC INTERN							
452,0	AUDITOR	S	1,0	IA	1,0	1,0	0,0
TOTAL COMPARTIMENT AUDIT PUBLIC INTERN			1,0		1,0	1,0	0,0
COMPARTIMENT CONFESIONAL							
453,0	PREOT	S	1,0	I	1,0	1,0	0,0
TOTAL COMPARTIMENT CONFESIONAL			1,0		1,0	1,0	0,0
SERVICIUL FINANCIAR-CONTABILITATE							
454,0	ŞEF SERVICIU	S	1,0	II	1,0	0,0	1,0
455,0	ECONOMIST	S	1,0	IA	1,0	1,0	0,0
456,0	ECONOMIST	S	1,0	IA	1,0	1,0	0,0
457,0	ECONOMIST	S	1,0	IA	1,0	1,0	0,0
458,0	ECONOMIST	S	1,0	IA	1,0	1,0	0,0
TOTAL SERVICIU FINANCIAR CONTABILITATE			5,0		5,0	4,0	1,0
SERVICIUL APROVIZIONARE - TRASNPORTURI							
459,0	ŞEF SERVICIU	S	1,0	II	1,0	0,0	1,0
460,0	ŞEF DEPOZIT MAGAZINER	M	1,0	I	1,0	0,0	1,0
461,0	ECONOMIST	S	1,0	IA	1,0	1,0	0,0
462,0	ECONOMIST	S	1,0	IA	1,0	1,0	0,0
463,0	ECONOMIST	S	1,0	IA	1,0	1,0	0,0
464,0	MAGAZINER	M	1,0		1,0	1,0	0,0
465,0	MAGAZINER	M	1,0		1,0	0,0	1,0
TOTAL APROVIZIONARE - TRASNPORTURI			7,0		7,0	4,0	3,0
COMPARTIMENT TRANSPORTURI							
466,0	SOFER (AUTOSANITARA)	M	1,0	II	1,0	1,0	0,0
467,0	SOFER (AUTOSANITARA)	M	1,0	II	1,0	1,0	0,0
468,0	SOFER	M	1,0	II	1,0	1,0	0,0
469,0	SOFER (AUTOSANITARA)	M	1,0	II	1,0	1,0	0,0
470,0	SOFER (AUTOSANITARA)	M	1,0	II	1,0	1,0	0,0
471,0	SOFER (AUTOSANITARA)	M	1,0	II	1,0	1,0	0,0
472,0	SOFER (AUTOSANITARA)	M	1,0	II	1,0	1,0	0,0
TOTAL COMPARTIMENT TRANSPORTURI			7,0		7,0	7,0	0,0
BIROUL ACHIZIȚII PUBLICE, CONTRACTARE							
473,0	ŞEF BIROU	S	1,0	II	1,0	1,0	0,0
474,0	ECONOMIST	S	1,0	IA	1,0	1,0	0,0
475,0	CONSILIER JURIDIC	S	1,0	IA	1,0	1,0	0,0
TOTAL BIROU ACHIZIȚII PUBLICE, CONTRACTARE			3,0		3,0	3,0	0,0
COMPARTIMENT ADMINISTRATIV- SECURITATEA MUNCII, PSI, PROTECTIE CIVILĂ ȘI SITUAȚII DE URGENȚĂ							
476,0	INGINER	S	1,0	IA	1,0	1,0	0,0
477,0	CASIER	M	1,0	I	1,0	1,0	0,0
TOTALCOMPARTIMENT ADMINISTRATIV- SECURITATEA MUNCII, PSI			2,0		2,0	2,0	0,0
SERVICIUL PRIVAT PENTRU SITUAȚII DE URGENTA							
478,0	ŞEF SERVICIU	S	1,0		1,0	0,0	1,0
479,0	POMPIER SERVANT	M	1,0	DEBUTANT	1,0	0,0	1,0
480,0	POMPIER SERVANT	M	1,0	DEBUTANT	1,0	0,0	1,0
481,0	POMPIER SERVANT	M	1,0		1,0	0,0	1,0
482,0	POMPIER SERVANT	M	1,0		1,0	0,0	1,0
483,0	POMPIER SERVANT	M	1,0		1,0	0,0	1,0
TOTAL SERVICIUL PRIVAT PENTRU SITUAȚII DE URGENTA			6,0		6,0	0,0	6,0
BLOC LENJERIE SPALATORIE							
484,0	SPALATOREASA	M	1,0	II	1,0	1,0	0,0
485,0	SPALATOREASA	M	1,0	II	1,0	1,0	0,0
486,0	SPALATOREASA	M	1,0	II	1,0	1,0	0,0
487,0	SPALATOREASA	M	1,0	II	1,0	1,0	0,0
488,0	SPALATOREASA	M	1,0	II	1,0	1,0	0,0

Nr. Crt.	FUNCTIA,GRAD SAU TREAPTA	Nivel studii	Cuantiu post	Grad sau Treapta	Numar posturi aprobate	Numar posturi ocupate	Numar posturi vacante
489,0	MUNCITOR (LENJEREASA)	M	1,0	II	1,0	1,0	0,0
TOTAL BLOC LENJERIE SPALATORIE			6,0		6,0	6,0	0,0
DESERVIRE							
490,0	PORTAR - I	M	1,0	I	1,0	1,0	0,0
491,0	PORTAR - I	M	1,0	I	1,0	1,0	0,0
492,0	PORTAR - I	M	1,0	I	1,0	1,0	0,0
493,0	PORTAR I	M	1,0	I	1,0	1,0	0,0
494,0	PORTAR- I	M	1,0	I	1,0	1,0	0,0
495,0	PORTAR- I	M	1,0		1,0	0,0	1,0
496,0	PORTAR- I	M	1,0	I	1,0	1,0	0,0
497,0	ARHIVAR I	M	1,0		1,0	1,0	0,0
498,0	CURIER I	M	1,0		1,0	1,0	0,0
TOTAL DESERVIRE			9,0		9,0	8,0	1,0
COMPARTIMENT DIETETICA SI BLOC ALIMENTAR							
499,0	ASISTENT MEDICAL	PL	1,0	PRINCIPAL	1,0	1,0	0,0
500,0	ASISTENT MEDICAL	PL	1,0	PRINCIPAL	1,0	1,0	0,0
501,0	MUNCITOR (BUCATAR)	M	1,0	I	1,0	1,0	0,0
502,0	MUNCITOR (BUCATAR)	M	1,0	I	1,0	1,0	0,0
503,0	MUNCITOR (BUCATAR)	M	1,0	I	1,0	1,0	0,0
504,0	MUNCITOR (BUCATAR)	M	1,0	I	1,0	1,0	0,0
505,0	MUNCITOR (BUCATAR)	M	1,0	I	1,0	1,0	0,0
506,0	MUNCITOR (BUCATAR)	M	1,0	I	1,0	1,0	0,0
507,0	MUNCITOR (BUCATAR)	M	1,0	I	1,0	1,0	0,0
508,0	MUNCITOR (BUCATAR)	M	1,0	IV	1,0	1,0	0,0
509,0	MUNCITOR (BUCATAR)	M	1,0	II	1,0	0,0	1,0
510,0	MUNCITOR (BUCATAR)	M	1,0	IV	1,0	1,0	0,0
511,0	MUNCITOR (BUCATAR)	M	1,0	IV	1,0	1,0	0,0
512,0	MUNCITOR (BUCATAR)	M	1,0	IV	1,0	1,0	0,0
TOTAL COMPARTIMENT DIETETICA SI BLOC ALIMENTAR			14,0		14,0	13,0	1,0
COMPARTIMENT LIFTURI - CENTRALA TELEFONICA							
513,0	MUNCITOR (LIFTIER)	M	1,0	I	1,0	1,0	0,0
514,0	MUNCITOR (LIFTIER)	M	1,0	III	1,0	1,0	0,0
515,0	MUNCITOR (LIFTIER)	M	1,0	III	1,0	1,0	0,0
516,0	MUNCITOR (LIFTIER)	M	1,0	I	1,0	1,0	0,0
517,0	MUNCITOR (LIFTIER)	M	1,0	II	1,0	1,0	0,0
TOTAL COMPARTIMENT LIFTURI - CENTRALA TELEFONICA			5,0		5,0	5,0	0,0
ACTIVITATE DE FRIZERIE							
518,0	MUNCITOR (FRIZER)	M	1,0	II	1,0	1,0	0,0
TOTAL FRIZERIE			1,0		1,0	1,0	0,0
APARATURA MEDICALA							
519,0	TEHNICIAN APARATURA MEDICALA	PL	1,0	PRINCIPAL	1,0	1,0	0,0
TOTAL APARATURA MEDICALA			1,0		1,0	1,0	0,0
COMPARTIMENT INTRETINERE CLADIRI, OXIGEN ,INSTALATII APA, LUMINA SI INCALZIRE, INTRETINERE SPATII VERZI							
520,0	MUNCITOR (INSTALATOR)	M	1,0	IV	1,0	1,0	0,0
521,0	MUNCITOR (INSTALATOR)	M	1,0	I	1,0	1,0	0,0
522,0	MUNCITOR (ELECTRICIAN)	M	1,0	I	1,0	1,0	0,0
523,0	MUNCITOR (ELECTRICIAN)	M	1,0	IV	1,0	1,0	0,0
524,0	MUNCITOR (LACATUS MECANIC)	M	1,0	I	1,0	1,0	0,0
525,0	MUNCITOR (LACATUS MECANIC)	M	1,0	IV	1,0	1,0	0,0
526,0	MUNCITOR (LACATUS MECANIC)	M	1,0	I	1,0	1,0	0,0
527,0	MUNCITOR (LACATUS MECANIC)	M	1,0	II	1,0	1,0	0,0
528,0	MUNCITOR (SUDOR)	M	1,0	II	1,0	1,0	0,0
529,0	MUNCITOR (LACATUS MECANIC)	M	1,0	I	1,0	1,0	0,0
530,0	MUNCITOR (LACATUS MECANIC)	M	1,0	III	1,0	1,0	0,0
531,0	MUNCITOR	M	1,0	I	1,0	1,0	0,0
532,0	MUNCITOR	M	1,0	I	1,0	0,0	1,0
TOTAL INTRETINERE CLADIRI, OXIGEN , INSTALATII APA, LUMINA S			13,0		13,0	12,0	1,0
COMPARTIMENT TEHNIC							
533,0	INGINER	S	1,0	I	1,0	1,0	0,0
534,0	INGINER	S	1,0	II	1,0	1,0	0,0
TOTAL COMPARTIMENT TEHNIC			2,0		2,0	2,0	0,0
COMP. CLORINARE (EPURARE APE UZATE SI REZIDUALE)							
535,0	SUBINGINER CHIMIST	SSD	1,0	SUBINGINER	1,0	1,0	0,0
TOTAL COMP. CLORINARE (EPURARE APE UZATE SI REZIDUALE)			1,0		1,0	1,0	0,0
EXPLOATARE CENTRALA TERMICA							
536,0	MUNCITOR (FOCHIST)	M	1,0	I	1,0	1,0	0,0
537,0	MUNCITOR (FOCHIST)	M	1,0	IV	1,0	1,0	0,0
538,0	MUNCITOR (FOCHIST)	M	1,0	I	1,0	1,0	0,0
539,0	MUNCITOR (FOCHIST)	M	1,0	IV	1,0	1,0	0,0
540,0	MUNCITOR (FOCHIST)	M	1,0	II	1,0	1,0	0,0
541,0	MUNCITOR (FOCHIST)	M	1,0	I	1,0	1,0	0,0

Nr. Crt.	FUNCTIA,GRAD SAU TREAPTA	Nivel studii	Cuquantum post	Grad sau Treapta	Numar posturi aprobate	Numar posturi ocupate	Numar posturi vacante
	TOTAL EXPLOATARE CENTRALA TERMICA		6,0		6,0	6,0	0,0
	TOTAL GENERAL		541,0		541,0	447,5	92,5
	* IN LABORATORUL DE RADIOLOGIE SI IMAGISTICA MEDICALA SUNT INCLUSI SI MEDICII SI ASISTENTII CARE DESERVESC DISPENSARUL TBC (TBC)*						