

HOTĂRÂREA NR. _____

privind modificarea Hotărârii Consiliului Local al Municipiului Craiova nr.253/2022 referitoare la aprobarea organigramei și statului de funcții ale Spitalului Clinic de Boli Infecțioase și Pneumoftiziologie „Victor Babeș” Craiova

Consiliul Local al Municipiului Craiova întrunit în ședința ordinară din data de 30.06.2022;

Având în vedere referatul de aprobare nr.113521/2022, raportul nr.115735/2022 întocmit de Serviciul Resurse Umane și raportul de avizare nr.115753/2022 întocmit de Direcția Juridică, Asistență de Specialitate și Contencios Administrativ prin care se propune modificarea Hotărârii Consiliului Local al Municipiului Craiova nr.253/2022 referitoare la aprobarea organigramei și statului de funcții ale Spitalului Clinic de Boli Infecțioase și Pneumoftiziologie „Victor Babeș” Craiova;

În conformitate cu prevederile Ordonanței de Urgență nr.57/2019 privind Codul Administrativ, cu modificările și completările ulterioare, Legii nr.95/2006, republicată, privind reforma în domeniul sănătății, cu modificările și completările ulterioare, Legii nr.53/2003, republicată – Codul Muncii, cu modificările și completările ulterioare, Ordinului nr.1312/250/2020 privind organizarea și funcționarea structurii de management al calității serviciilor de sănătate în cadrul unităților sanitare cu paturi și serviciilor de ambulanță, în procesul de implementare a sistemului de management al calității serviciilor de sănătate și siguranței pacientului, Ordinului nr.75/2019 pentru aprobarea Criteriilor de performanță privind constituirea, încadrarea și dotarea serviciilor voluntare și a serviciilor private pentru situații de urgență, cu modificările și completările ulterioare și Ordinului nr.1224/2010 privind aprobarea normativelor de personal pentru asistența medicală spitalicească, precum și pentru modificarea și completarea Ordinului ministrului sănătății publice nr.1778/2006 privind aprobarea normativelor de personal, cu modificările și completările ulterioare;

În temeiul art.129 alin.2 lit.a, coroborat cu alin.3 lit.c, art.139 alin.3 lit.h, art.154 alin.1 și art.196 alin.1 lit.a din Ordonanța de Urgență a Guvernului nr.57/2019 privind Codul administrativ, cu modificările și completările ulterioare;

HOTĂRĂȘTE:

Art.1. Se aprobă modificarea anexelor nr.1 și 2 ale Hotărârii Consiliului Local al Municipiului Craiova nr.253/2022 referitoare la aprobarea organigramei și statului de funcții ale Spitalului Clinic de Boli Infecțioase și Pneumoftiziologie „Victor Babeș” Craiova, conform anexelor nr.1 și 2 care fac parte integrantă din prezenta hotărâre.

Art.2. Primarul Municipiului Craiova, prin aparatul de specialitate: Serviciul Administrație Publică Locală, Serviciul Resurse Umane și Spitalul Clinic de Boli Infecțioase și Pneumoftiziologie „Victor Babeș” Craiova vor aduce la îndeplinire prevederile prezentei hotărâri.

INIȚIATOR,
PRIMAR,
Lia-Olguța VASILESCU

AVIZAT,
SECRETAR GENERAL,
Nicoleta MIULESCU

REFERAT DE APROBARE
A PROIECTULUI DE HOTARÂRE PRIVIND MODIFICAREA H.C.L. NR. 253/2022,
REFERITOARE LA APROBAREA ORGANIGramei ȘI STATULUI DE FUNCȚII ALE
SPITALULUI CLINIC DE BOLI INFECȚIOASE ȘI PNEUMOFTIZIOLOGIE „VICTOR
BABEȘ” CRAIOVA

Având în vedere:

- adresa Spitalului Clinic de Boli Infecțioase și Pneumoftiziologie „Victor Babeș” Craiova nr. 8066/2022, înregistrată la autoritatea locală sub nr. 107/2022;

- prevederile Legii nr. 95/2006, republicată, privind reforma în domeniul sănătății, cu modificările și completările ulterioare;

-prevederile Ordonanței de Urgență nr. 162/2008, privind transferul ansamblului de atribuții și competențe exercitate de Ministerul Sănătății Publice către autoritățile administrației publice locale, cu modificările și completările ulterioare;

- prevederile Ordinului nr. 1224/2010 privind aprobarea normativelor de personal pentru asistența medicală spitalicească, precum și pentru modificarea și completarea Ordinului ministrului sănătății publice nr. 1.778/2006 privind aprobarea normativelor de personal, cu modificările și completările ulterioare;

-prevederile Ordinului nr. 1312/250/2020 privind organizarea și funcționarea structurii de management al calității serviciilor de sănătate în cadrul unităților sanitare cu paturi și serviciilor de ambulanță, în procesul de implementare a sistemului de management al calității serviciilor de sănătate și siguranței pacientului;

-prevederile Ordinului nr. 75/2019 pentru aprobarea Criteriilor de performanță privind constituirea, încadrarea și dotarea serviciilor voluntare și a serviciilor private pentru situații de urgență, cu modificările și completările ulterioare;

-prevederile Ordonanței de urgență nr. 44/2022 privind stabilirea unor măsuri în cadrul sistemului de sănătate, precum și pentru interpretarea, modificarea și completarea unor acte normative;

-prevederile Ordonanței de Urgență nr. 57/2019, privind Codul administrativ, cu modificările și completările ulterioare;

propunem promovarea proiectului de hotarâre privind:

- modificarea H.C.L. nr. 253/2022, referitoare la aprobarea organigramei și statului de funcții ale Spitalului Clinic de Boli Infecțioase și Pneumoftiziologie „Victor Babeș” Craiova.

PRIMAR,
LIA –OLGUȚA VASILESCU

ÎNTOCMIT:
CAMELIA-NICOLETA FLOREA
Îmi asum responsabilitatea privind
fundamentarea, realitatea și legalitatea
întocmirii acestui act oficial
Data:22.06.2022
Semnătura: _____

RAPORT

privind modificarea Hotărârii Consiliului Local al municipiului Craiova nr. 253/2022, referitoare la aprobarea organigramei și statului de funcții ale Spitalului Clinic de Boli Infecțioase și Pneumoftiziologie „Victor Babeș” Craiova

În conformitate cu prevederile Ordonanței de Urgență a Guvernului României nr. 162/2008 pentru modificarea unor acte normative din domeniul sănătății în vederea descentralizării, a fost transferat ansamblul de atribuții și competențe ale Ministerului Sănătății Publice către autoritățile administrației publice locale, concomitent cu asigurarea resurselor umane, materiale și financiare necesare exercitării acestora.

Prin Hotărârea Guvernului României nr. 529/2010 pentru modificarea și completarea unor acte normative din domeniul sănătății a fost aprobată lista unităților sanitare publice cu paturi pentru care s-a transferat managementul asistenței medicale către autoritățile administrației publice locale, la pozițiile 148-150 din această listă regăsindu-se Spitalul Clinic Municipal „Filantropia” Craiova, Spitalul Clinic de Boli Infecțioase și Pneumoftiziologie „Victor Babeș” Craiova și Spitalul Clinic de Neuropsihiatrie Craiova.

În Monitorul Oficial nr. 658/2010 a fost publicat Ordinul nr. 1224/2010 privind aprobarea normativelor de personal pentru asistența medicală spitalicească, precum și pentru modificarea și completarea Ordinului ministrului sănătății publice nr. 1.778/2006 privind aprobarea normativelor de personal.

Potrivit art. 6 din actul normativ menționat, numărul de posturi, pe categorii de personal, între limita minimă și maximă, se stabilește de managerul fiecărei unități sanitare cu personalitate juridică, potrivit structurilor medicale aprobate, cu încadrarea în cheltuielile de personal aprobate ca limită maximă prin bugetul anual de venituri și cheltuieli.

Prin Hotărârea Consiliului Local al municipiului Craiova nr. 253/2022 au fost aprobate organigrama și statul de funcții ale Spitalului Clinic de Boli Infecțioase și Pneumoftiziologie „Victor Babeș” Craiova, pentru un număr de 539 posturi.

Prin adresa nr. 9032/24.06.2022, înregistrată la autoritatea locală sub nr.115706/27.06.2022, Spitalul Clinic de Boli Infecțioase și Pneumoftiziologie „Victor Babeș” Craiova a comunicat avizul Ministerului Sănătății cu privire la modificarea structurii organizatorice, prin înființarea a două cabinete medicale, după cum urmează:

- un cabinet medical de specialitate – neurologie;
- un cabinet medical de specialitate – diabet zaharat, nutriție și boli metabolice.

Conform notei de fundamentare și adresei nr.8066/2022, înregistrată la Consiliul Local al municipiului Craiova sub numărul 107/2022, Spitalul Clinic de Boli Infecțioase și Pneumoftiziologie „Victor Babeș” Craiova propune spre aprobare un număr de 541 posturi, cu o majorare de 2 posturi, cu următoarele modificări:

- se înființează un cabinet medical de specialitate – neurologie, cu un post vacant de medic specialist, specialitatea neurologie;
- se înființează un cabinet medical de specialitate – diabet zaharat, nutriție și boli metabolice,

cu un post vacant de medic specialist, specialitatea diabet zaharat, nutriție și boli metabolice.

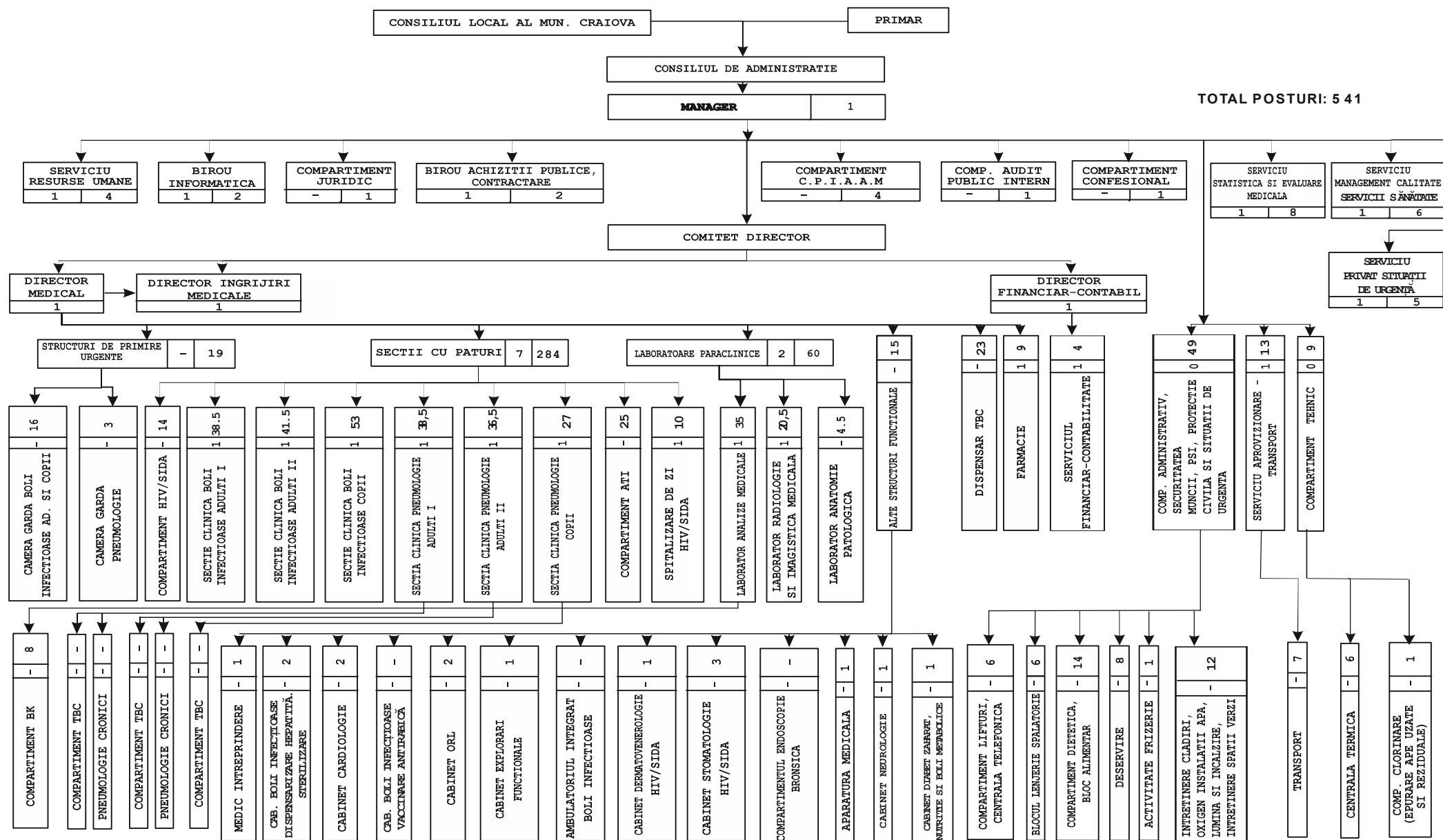
În conformitate cu prevederile art. 129 alin. 2 lit. "a" și alin. 3 lit. "c" din Ordonanța de Urgență nr. 57/2019 privind Codul administrativ, cu modificările și completările ulterioare, Consiliul Local exercită atribuții privind unitatea administrativ-teritorială, organizarea proprie, precum și organizarea și funcționarea aparatului de specialitate al primarului, ale instituțiilor publice de interes local și ale societăților și regiilor autonome de interes local. În exercitarea acestor atribuții, Consiliul Local aprobă, în condițiile legii, la propunerea primarului, înființarea, organizarea și statul de funcții ale aparatului de specialitate al primarului, ale instituțiilor publice de interes local, reorganizarea și statul de funcții ale regiilor autonome de interes local, precum și înființarea, reorganizarea sau desființarea de societăți de interes local și statul de funcții al acestora.

Având în vedere cele prezentate, propunem Consiliului Local al municipiului Craiova, în conformitate cu prevederile Ordonanței de Urgență nr. 57/2019 privind Codul Administrativ, cu modificările și completările ulterioare, Legii nr. 95/2006, republicată, privind reforma în domeniul sănătății, cu modificările și completările ulterioare, Legii nr. 53/2003, republicată – Codul Muncii, cu modificările și completările ulterioare, Ordinului nr. 1312/250/2020 privind organizarea și funcționarea structurii de management al calității serviciilor de sănătate în cadrul unităților sanitare cu paturi și serviciilor de ambulanță, în procesul de implementare a sistemului de management al calității serviciilor de sănătate și siguranței pacientului, Ordinului nr. 75/2019 pentru aprobarea Criteriilor de performanță privind constituirea, încadrarea și dotarea serviciilor voluntare și a serviciilor private pentru situații de urgență, cu modificările și completările ulterioare și Ordinului nr. 1224/2010 privind aprobarea normativelor de personal pentru asistența medicală spitalicească, precum și pentru modificarea și completarea Ordinului ministrului sănătății publice nr. 1.778/2006 privind aprobarea normativelor de personal, cu modificările și completările ulterioare, modificarea Hotărârii Consiliului Local al municipiului Craiova nr. 253/2022, referitoare la aprobarea organigramei și statului de funcții ale Spitalului Clinic de Boli Infecțioase și Pneumoftiziologie „Victor Babeș” Craiova, conform anexelor 1 și 2 la prezentul raport.

ȘEF SERVICIU,
CAMELIA NICOLETA FLOREA
Îmi asum responsabilitatea privind realitatea și
legalitatea în solidar cu întocmitorul înscrisului
Data:
Semnătura:

Întocmit,
Cons. GEORGETA-VIORICA GLIGORIJEVIĆ
Îmi asum responsabilitatea pentru fundamentarea,
realitatea și legalitatea întocmirii acestui act oficial
Data:
Semnătura:

ORGANIGRAMA SPITALULUI CLINIC DE BOLI INFECȚIOASE ȘI PNEUMOFTIZIOLOGIE „VICTOR BABEȘ” CRAIOVA



STAT DE FUNCTII AL SPITALULUI CLINIC DE BOLI INFECTIOASE ȘI PNEUMOTIZIOLOGIE "VICTOR BABEȘ" CRAIOVA

Nr. Crt.	FUNCTIA,GRAD SAU TREAPTA	Nivel studii	Cuquantum post	Grad sau Treapta	Numar posturi aprobate	Numar posturi ocupate	Numar posturi vacante
CONDUCEREA SPITALULUI							
1,0	MANAGER	S	1,0	II	1,0	1,0	0,0
2,0	DIRECTOR MEDICAL	S	1,0	II	1,0	0,0	1,0
3,0	DIRECTOR FIN.CONTABIL	S	1,0	II	1,0	0,0	1,0
4,0	DIRECTOR INGRIJIRI MEDICALE	S	1,0	II	1,0	1,0	0,0
TOTAL CONDUCERE			4,0		4,0	2,0	2,0
COMPARTIMENT PREVENIRE INFECTII ASOCIATE ASISTENTEI MEDICALE							
5,0	MEDIC	S	1,0	PRIMAR	1,0	1,0	0,0
TOTAL PERSONAL SANITAR			1,0		1,0	1,0	0,0
6,0	ASISTENT MEDICAL	PL	1,0	PRINCIPAL	1,0	1,0	0,0
7,0	ASISTENT MEDICAL	PL	1,0	PRINCIPAL	1,0	1,0	0,0
TOTAL PERSONAL MEDIU			2,0		2,0	2,0	0,0
8,0	AGEN DDD	M	1,0		1,0	1,0	0,0
TOTAL PERSONAL AUXILIAR			1,0		1,0	1,0	0,0
CAMERA DE GARDA BOLI INFECTIOASE							
9,0	ASISTENT MEDICAL	PL	1,0	PRINCIPAL	1,0	1,0	0,0
10,0	ASISTENT MEDICAL	S	1,0	PRINCIPAL	1,0	1,0	0,0
11,0	ASISTENT MEDICAL	S	1,0	PRINCIPAL	1,0	1,0	0,0
12,0	ASISTENT MEDICAL	PL	1,0	PRINCIPAL	1,0	1,0	0,0
13,0	ASISTENT MEDICAL	S	1,0	PRINCIPAL	1,0	1,0	0,0
14,0	ASISTENT MEDICAL	S	1,0	PRINCIPAL	1,0	1,0	0,0
15,0	ASISTENT MEDICAL	PL	1,0	PRINCIPAL	1,0	1,0	0,0
16,0	ASISTENT MEDICAL	S	1,0	PRINCIPAL	1,0	1,0	0,0
17,0	ASISTENT MEDICAL	PL	1,0	PRINCIPAL	1,0	0,0	1,0
TOTAL ASISTENTE 3 TURE CAMERA DE GARDA			9,0		9,0	8,0	1,0
18,0	INFIRMIERA	M	1,0		1,0	1,0	0,0
19,0	INFIRMIERA	M	1,0		1,0	1,0	0,0
20,0	INFIRMIERA	M	1,0		1,0	1,0	0,0
21,0	INFIRMIERA	M	1,0		1,0	1,0	0,0
22,0	INFIRMIERA	G	1,0		1,0	0,0	1,0
TOTAL INFIRMIERE CAMERA DE GARDA			5,0		5,0	4,0	1,0
23,0	INGRIJITOARE	G	1,0		1,0	1,0	0,0
24,0	INGRIJITOARE	G	1,0		1,0	1,0	0,0
TOTAL INGRIJITOARE CAMERA DE GARDA			2,0		2,0	2,0	0,0
CAMERA GARDA PNEUMOLOGIE							
25,0	ASISTENT MEDICAL	PL	1,0	PRINCIPAL	1,0	1,0	0,0
26,0	ASISTENT MEDICAL	PL	1,0	PRINCIPAL	1,0	1,0	0,0
27,0	ASISTENT MEDICAL	PL	1,0	GENERALIST	1,0	0,0	1,0
TOTAL PERS.SANITAR MEDIU			3,0		3,0	2,0	1,0
SECTIA CLINICA DE BOLI INFECTIOASE ADULTI I - 65PATURI							
28,0	MEDIC SEF SECTIE	S	1,0	II	1,0	0,0	1,0
29,0	MEDIC	S	1,0	PRIMAR	1,0	1,0	0,0
30,0	MEDIC	S	1,0	SPECIALIST	1,0	1,0	0,0
30,5	MEDIC - As. Univ.	S	0,5	PRIMAR	0,5	0,5	0,0
31,5	MEDIC	S	1,0	PRIMAR	1,0	1,0	0,0
32,5	MEDIC	S	1,0	PRIMAR	1,0	1,0	0,0
TOTAL MEDICI			5,5		5,5	4,5	1,0
33,5	ASISTENT MEDICAL SEF	S	1,0	PRINCIPAL	1,0	1,0	0,0
34,5	ASISTENT MEDICAL	PL	1,0	PRINCIPAL	1,0	1,0	0,0
35,5	ASISTENT MEDICAL	PL	1,0	PRINCIPAL	1,0	1,0	0,0
36,5	ASISTENT MEDICAL	S	1,0	PRINCIPAL	1,0	1,0	0,0
37,5	ASISTENT MEDICAL	PL	1,0	PRINCIPAL	1,0	1,0	0,0
38,5	ASISTENT MEDICAL	S	1,0	PRINCIPAL	1,0	0,0	1,0
39,5	ASISTENT MEDICAL	S	1,0	PRINCIPAL	1,0	1,0	0,0
40,5	ASISTENT MEDICAL	PL	1,0	PRINCIPAL	1,0	1,0	0,0
41,5	ASISTENT MEDICAL	PL	1,0	PRINCIPAL	1,0	1,0	0,0
42,5	ASISTENT MEDICAL	PL	1,0	PRINCIPAL	1,0	1,0	0,0
43,5	ASISTENT MEDICAL	S	1,0	PRINCIPAL	1,0	1,0	0,0
44,5	ASISTENT MEDICAL	PL	1,0	PRINCIPAL	1,0	1,0	0,0
45,5	ASISTENT MEDICAL	S	1,0	GENERALIST	1,0	0,0	1,0
46,5	ASISTENT MEDICAL	S	1,0	PRINCIPAL	1,0	1,0	0,0
47,5	ASISTENT MEDICAL	PL	1,0	PRINCIPAL	1,0	1,0	0,0
48,5	ASISTENT MEDICAL	PL	1,0	PRINCIPAL	1,0	1,0	0,0
49,5	ASISTENT MEDICAL	PL	1,0	PRINCIPAL	1,0	1,0	0,0
50,5	ASISTENT MEDICAL	PL	1,0	PRINCIPAL	1,0	1,0	0,0

Nr. Crt.	FUNCTIA,GRAD SAU TREAPTA	Nivel studii	Quantum post	Grad sau Treapta	Numar posturi aprobate	Numar posturi ocupate	Numar posturi vacante
51,5	ASISTENT MEDICAL	PL	1,0	PRINCIPAL	1,0	1,0	0,0
TOTAL PERS.MEDIU TREI TURE			19,0		19,0	17,0	2,0
52,5	REGISTRATOR MEDICAL	M	1,0	DEBUTANT	1,0	0,0	1,0
TOTAL PERS.MEDIU POST FIX			1,0		1,0	0,0	1,0
53,5	INFIRMIERA	G	1,0		1,0	1,0	0,0
54,5	INFIRMIERA	G	1,0		1,0	1,0	0,0
55,5	INFIRMIERA	M	1,0		1,0	1,0	0,0
56,5	INFIRMIERA	G	1,0		1,0	0,0	1,0
57,5	INFIRMIERA	G	1,0		1,0	1,0	0,0
58,5	INFIRMIERA	G	1,0		1,0	1,0	0,0
59,5	INFIRMIERA	G	1,0		1,0	1,0	0,0
60,5	INFIRMIERA	M	1,0		1,0	1,0	0,0
61,5	INFIRMIERA	G	1,0		1,0	1,0	0,0
62,5	INFIRMIERA	G	1,0		1,0	1,0	0,0
63,5	INFIRMIERA	M	1,0		1,0	1,0	0,0
64,5	INFIRMIERA	M	1,0		1,0	1,0	0,0
65,5	INFIRMIERA	M	1,0		1,0	1,0	0,0
TOTAL INFIRMIERE			13,0		13,0	12,0	1,0
66,5	INGRIJITOARE	G	1,0		1,0	1,0	0,0
TOTAL INGRIJITOARE			1,0		1,0	1,0	0,0
COMPARTIMENT HIV/SIDA 15 PATURI							
67,5	MEDIC	S	1,0	SPECIALIST	1,0	1,0	0,0
TOTAL MEDICI			1,0		1,0	1,0	0,0
68,5	ASISTENT MEDICAL	S	1,0	PRINCIPAL	1,0	1,0	0,0
69,5	ASISTENT MEDICAL	PL	1,0	PRINCIPAL	1,0	1,0	0,0
70,5	ASISTENT MEDICAL	S	1,0	PRINCIPAL	1,0	1,0	0,0
71,5	ASISTENT MEDICAL	S	1,0	PRINCIPAL	1,0	1,0	0,0
72,5	ASISTENT MEDICAL	S	1,0	PRINCIPAL	1,0	1,0	0,0
73,5	ASISTENT MEDICAL	S	1,0	PRINCIPAL	1,0	1,0	0,0
74,5	ASISTENT MEDICAL	S	1,0	PRINCIPAL	1,0	1,0	0,0
TOTAL PERSONAL 3 TURE			7,0		7,0	7,0	0,0
75,5	INFIRMIERA	G	1,0		1,0	1,0	0,0
76,5	INFIRMIERA	G	1,0		1,0	1,0	0,0
77,5	INFIRMIERA	G	1,0		1,0	1,0	0,0
78,5	INFIRMIERA	G	1,0		1,0	1,0	0,0
79,5	INFIRMIERA	G	1,0		1,0	1,0	0,0
80,5	INFIRMIERA	G	1,0		1,0	1,0	0,0
TOTAL INFIRMIERE			6,0		6,0	6,0	0,0
SECTIA CLINICA BOLI INFECTIOASE ADULTI II - 65 PATURI							
81,5	MEDIC SEF SECTIE	S	1,0	II	1,0	1,0	0,0
82,5	MEDIC	S	1,0	SPECIALIST	1,0	0,0	1,0
83,5	MEDIC	S	1,0	PRIMAR	1,0	1,0	0,0
84,5	MEDIC	S	1,0	PRIMAR	1,0	1,0	0,0
85,5	MEDIC	S	1,0	PRIMAR	1,0	1,0	0,0
86,0	MEDIC - Sef lucr.	S	0,5	PRIMAR	0,5	0,5	0,0
TOTAL MEDICI			5,5		5,5	4,5	1,0
87,0	ASISTENT MEDICAL SEF	PL	1,0	PRINCIPAL	1,0	1,0	0,0
88,0	ASISTENT MEDICAL	PL	1,0	PRINCIPAL	1,0	0,0	1,0
89,0	ASISTENT MEDICAL	PL	1,0	PRINCIPAL	1,0	1,0	0,0
90,0	ASISTENT MEDICAL	PL	1,0	PRINCIPAL	1,0	1,0	0,0
91,0	ASISTENT MEDICAL	PL	1,0	PRINCIPAL	1,0	1,0	0,0
92,0	ASISTENT MEDICAL	S	1,0	PRINCIPAL	1,0	1,0	0,0
93,0	ASISTENT MEDICAL	PL	1,0	PRINCIPAL	1,0	0,0	1,0
94,0	ASISTENT MEDICAL	PL	1,0	PRINCIPAL	1,0	1,0	0,0
95,0	ASISTENT MEDICAL	S	1,0	PRINCIPAL	1,0	1,0	0,0
96,0	ASISTENT MEDICAL	S	1,0	PRINCIPAL	1,0	1,0	0,0
97,0	ASISTENT MEDICAL	S	1,0	GENERALIST	1,0	1,0	0,0
98,0	ASISTENT MEDICAL	S	1,0	PRINCIPAL	1,0	1,0	0,0
99,0	ASISTENT MEDICAL	S	1,0	PRINCIPAL	1,0	1,0	0,0
100,0	ASISTENT MEDICAL	PL	1,0	GENERALIST	1,0	0,0	1,0
101,0	ASISTENT MEDICAL	S	1,0	PRINCIPAL	1,0	1,0	0,0
102,0	ASISTENT MEDICAL	S	1,0	GENERALIST	1,0	1,0	0,0
103,0	ASISTENT MEDICAL	S	1,0	PRINCIPAL	1,0	1,0	0,0
104,0	ASISTENT MEDICAL	PL	1,0	GENERALIST	1,0	1,0	0,0
105,0	ASISTENT MEDICAL	PL	1,0	GENERALIST	1,0	1,0	0,0
106,0	ASISTENT MEDICAL	S	1,0	GENERALIST	1,0	0,0	1,0
107,0	ASISTENT MEDICAL	S	1,0	PRINCIPAL	1,0	0,0	1,0
TOTAL ASISTENTE 3 TURE			21,0		21,0	16,0	5,0
108,0	REGISTRATOR MEDICAL	M	1,0	DEBUTANT	1,0	0,0	1,0
TOTAL PERS.MEDIU POST FIX			1,0		1,0	0,0	1,0

Nr. Crt.	FUNCTIA,GRAD SAU TREAPTA	Nivel studii	Cuquantum post	Grad sau Treapta	Numar posturi aprobate	Numar posturi ocupate	Numar posturi vacante
109,0	INFIRMIERA	G	1,0		1,0	1,0	0,0
110,0	INFIRMIERA	M	1,0		1,0	0,0	1,0
111,0	INFIRMIERA	G	1,0		1,0	1,0	0,0
112,0	INFIRMIERA	G	1,0		1,0	0,0	1,0
113,0	INFIRMIERA	G	1,0		1,0	1,0	0,0
114,0	INFIRMIERA	G	1,0		1,0	1,0	0,0
115,0	INFIRMIERA	M	1,0		1,0	1,0	0,0
116,0	INFIRMIERA	M	1,0		1,0	1,0	0,0
117,0	INFIRMIERA	G	1,0		1,0	1,0	0,0
118,0	INFIRMIERA	G	1,0		1,0	1,0	0,0
119,0	INFIRMIERA	G	1,0		1,0	0,0	1,0
120,0	INFIRMIERA	G	1,0		1,0	1,0	0,0
121,0	INFIRMIERA	G	1,0		1,0	1,0	0,0
TOTAL INFIRMIERE			13,0		13,0	10,0	3,0
122,0	INGRIJITOARE	G	1,0		1,0	1,0	0,0
123,0	INGRIJITOARE	G	1,0		1,0	1,0	0,0
TOTAL INGRIJITOARE			2,0		2,0	2,0	0,0
SECTIA CLINICA BOLI INFECTIOASE COPII - 60 PATURI							
124,0	MEDIC SEF SECTIE	S	1,0	II	1,0	0,0	1,0
125,0	MEDIC	S	1,0	SPECIALIST	1,0	1,0	0,0
126,0	MEDIC	S	1,0	SPECIALIST	1,0	0,0	1,0
127,0	MEDIC	S	1,0	PRIMAR	1,0	1,0	0,0
128,0	MEDIC	S	1,0	SPECIALIST	1,0	1,0	0,0
129,0	MEDIC	S	1,0	PRIMAR	1,0	1,0	0,0
TOTAL MEDICI			6,0		6,0	4,0	2,0
130,0	ASISTENT MEDICAL SEF	SSD	1,0	PRINCIPAL	1,0	1,0	0,0
131,0	ASISTENT MEDICAL	PL	1,0	PRINCIPAL	1,0	1,0	0,0
132,0	ASISTENT MEDICAL	PL	1,0	PRINCIPAL	1,0	1,0	0,0
133,0	ASISTENT MEDICAL	S	1,0	PRINCIPAL	1,0	1,0	0,0
134,0	ASISTENT MEDICAL	S	1,0	PRINCIPAL	1,0	1,0	0,0
135,0	ASISTENT MEDICAL	PL	1,0	PRINCIPAL	1,0	1,0	0,0
136,0	ASISTENT MEDICAL	PL	1,0	PRINCIPAL	1,0	1,0	0,0
137,0	ASISTENT MEDICAL	PL	1,0	PRINCIPAL	1,0	1,0	0,0
138,0	ASISTENT MEDICAL	S	1,0	GENERALIST	1,0	0,0	1,0
139,0	ASISTENT MEDICAL	PL	1,0	PRINCIPAL	1,0	1,0	0,0
140,0	ASISTENT MEDICAL	S	1,0	PRINCIPAL	1,0	0,0	1,0
141,0	ASISTENT MEDICAL	S	1,0	PRINCIPAL	1,0	0,0	1,0
142,0	ASISTENT MEDICAL	PL	1,0	PRINCIPAL	1,0	1,0	0,0
143,0	ASISTENT MEDICAL	PL	1,0	PRINCIPAL	1,0	1,0	0,0
144,0	ASISTENT MEDICAL	PL	1,0	PRINCIPAL	1,0	1,0	0,0
145,0	ASISTENT MEDICAL	PL	1,0	PRINCIPAL	1,0	1,0	0,0
146,0	ASISTENT MEDICAL	PL	1,0	PRINCIPAL	1,0	1,0	0,0
147,0	ASISTENT MEDICAL	PL	1,0	PRINCIPAL	1,0	1,0	0,0
148,0	ASISTENT MEDICAL	PL	1,0	PRINCIPAL	1,0	1,0	0,0
149,0	ASISTENT MEDICAL	S	1,0	PRINCIPAL	1,0	1,0	0,0
150,0	ASISTENT MEDICAL	PL	1,0	GENERALIST	1,0	0,0	1,0
TOTAL PERS.MED.TREI TURE			21,0		21,0	17,0	4,0
151,0	ASISTENT MEDICAL	S	1,0	PRINCIPAL	1,0	0,0	1,0
152,0	ASISTENT MEDICAL	PL	1,0	PRINCIPAL	1,0	1,0	0,0
153,0	ASISTENT MEDICAL	PL	1,0	PRINCIPAL	1,0	0,0	1,0
TOTAL PERS.MEDIU BIBERONERIE			3,0		3,0	1,0	2,0
154,0	REGISTRATOR MEDICAL	M	1,0		1,0	0,0	1,0
TOTAL PERS.MEDIU POST FIX			1,0		1,0	0,0	1,0
155,0	INFIRMIERA	M	1,0		1,0	1,0	0,0
156,0	INFIRMIERA	G	1,0		1,0	1,0	0,0
157,0	INFIRMIERA	G	1,0		1,0	1,0	0,0
158,0	INFIRMIERA	M	1,0		1,0	1,0	0,0
159,0	INFIRMIERA	G	1,0		1,0	1,0	0,0
160,0	INFIRMIERA	G	1,0		1,0	1,0	0,0
161,0	INFIRMIERA	G	1,0		1,0	1,0	0,0
162,0	INFIRMIERA	G	1,0		1,0	1,0	0,0
163,0	INFIRMIERA	M	1,0		1,0	1,0	0,0
164,0	INFIRMIERA	G	1,0		1,0	1,0	0,0
165,0	INFIRMIERA	G	1,0		1,0	1,0	0,0
166,0	INFIRMIERA	G	1,0		1,0	1,0	0,0
167,0	INFIRMIERA	M	1,0		1,0	1,0	0,0
168,0	INFIRMIERA	M	1,0		1,0	1,0	0,0
169,0	INFIRMIERA	M	1,0		1,0	1,0	0,0
170,0	INFIRMIERA	G	1,0		1,0	1,0	0,0
171,0	INFIRMIERA	G	1,0		1,0	1,0	0,0
TOTAL INFIRMIERE			17,0		17,0	17,0	0,0
172,0	INGRIJITOARE	G	1,0		1,0	1,0	0,0
173,0	INGRIJITOARE	G	1,0		1,0	1,0	0,0

Nr. Crt.	FUNCTIA,GRAD SAU TREAPTA	Nivel studii	Quantum post	Grad sau Treapta	Numar posturi aprobate	Numar posturi ocupate	Numar posturi vacante
174,0	INGRIJITOARE	G	1,0		1,0	1,0	0,0
175,0	INGRIJITOARE	G	1,0		1,0	1,0	0,0
176,0	INGRIJITOARE	G	1,0		1,0	1,0	0,0
177,0	INGRIJITOARE	G	1,0		1,0	1,0	0,0
TOTAL INGRIJITOARE			6,0		6,0	6,0	0,0
AMBULATORIU INTEGRAT BOLI INFECTIOASE							
Activitatea este asigurata de personalul unitatii							
COMPARTIMENT ATI - 10 PATURI							
178,0	MEDIC	S	1,0	SPECIALIST	1,0	1,0	0,0
179,0	MEDIC	S	1,0	SPECIALIST	1,0	1,0	0,0
180,0	MEDIC	S	1,0	SPECIALIST	1,0	1,0	0,0
TOTAL PERS.SUPERIOR			3,0		3,0	3,0	0,0
181,0	ASISTENT MEDICAL	S	1,0	PRINCIPAL	1,0	1,0	0,0
182,0	ASISTENT MEDICAL	S	1,0	PRINCIPAL	1,0	1,0	0,0
183,0	ASISTENT MEDICAL	S	1,0	PRINCIPAL	1,0	0,0	1,0
184,0	ASISTENT MEDICAL	PL	1,0	PRINCIPAL	1,0	1,0	0,0
185,0	ASISTENT MEDICAL	S	1,0	PRINCIPAL	1,0	1,0	0,0
186,0	ASISTENT MEDICAL	PL	1,0	PRINCIPAL	1,0	1,0	0,0
187,0	ASISTENT MEDICAL	PL	1,0	PRINCIPAL	1,0	1,0	0,0
188,0	ASISTENT MEDICAL	S	1,0	PRINCIPAL	1,0	1,0	0,0
189,0	ASISTENT MEDICAL	S	1,0	GENERALIST	1,0	1,0	0,0
190,0	ASISTENT MEDICAL	S	1,0	PRINCIPAL	1,0	1,0	0,0
191,0	ASISTENT MEDICAL	PL	1,0	PRINCIPAL	1,0	1,0	0,0
192,0	ASISTENT MEDICAL	S	1,0	PRINCIPAL	1,0	1,0	0,0
193,0	ASISTENT MEDICAL	PL	1,0	PRINCIPAL	1,0	0,0	1,0
194,0	ASISTENT MEDICAL	PL	1,0	PRINCIPAL	1,0	1,0	0,0
TOTAL PERS.SAN.MEDIU TREI TURE			14,0		14,0	12,0	2,0
195,0	INFIRMIERA	G	1,0		1,0	1,0	0,0
196,0	INFIRMIERA	M	1,0		1,0	1,0	0,0
197,0	INFIRMIERA	G	1,0		1,0	1,0	0,0
198,0	INFIRMIERA	G	1,0		1,0	1,0	0,0
199,0	INFIRMIERA	G	1,0		1,0	1,0	0,0
200,0	INFIRMIERA	M	1,0		1,0	1,0	0,0
201,0	INFIRMIERA	G	1,0		1,0	0,0	1,0
202,0	INFIRMIERA	G	1,0		1,0	1,0	0,0
TOTAL INFIRMIERE			8,0		8,0	7,0	1,0
SECTIA CLINICA DE PNEUMOLOGIE ADULTI I : 75 PATURI din care COMP. TBC 30 paturi SI PNEUMOLOGIE CRONICI 4 PATURI							
203,0	MEDIC SEF SECTIE	S	1,0	II	1,0	0,0	1,0
204,0	MEDIC	S	1,0	PRIMAR	1,0	1,0	0,0
205,0	MEDIC	S	1,0	PRIMAR	1,0	1,0	0,0
206,0	MEDIC	S	1,0	PRIMAR	1,0	1,0	0,0
207,0	MEDIC	S	1,0	PRIMAR	1,0	1,0	0,0
208,0	MEDIC	S	1,0	PRIMAR	1,0	1,0	0,0
208,5	MEDIC	S	0,5	PRIMAR	0,5	0,5	0,0
TOTAL PERS. SANITAR SUPERIOR			6,5		6,5	5,5	1,0
209,5	ASISTENT MEDICAL SEF	PL	1,0	PRINCIPAL	1,0	0,0	1,0
210,5	ASISTENT MEDICAL	S	1,0	PRINCIPAL	1,0	1,0	0,0
211,5	ASISTENT MEDICAL	S	1,0	PRINCIPAL	1,0	1,0	0,0
212,5	ASISTENT MEDICAL	PL	1,0	PRINCIPAL	1,0	1,0	0,0
213,5	ASISTENT MEDICAL	PL	1,0	PRINCIPAL	1,0	1,0	0,0
214,5	ASISTENT MEDICAL	PL	1,0	PRINCIPAL	1,0	0,0	1,0
215,5	KINETOTERAPEUT	S	1,0	PRINCIPAL	1,0	1,0	0,0
216,5	ASISTENT MEDICAL	PL	1,0	PRINCIPAL	1,0	1,0	0,0
217,5	ASISTENT MEDICAL	S	1,0	PRINCIPAL	1,0	1,0	0,0
218,5	ASISTENT MEDICAL	S	1,0	PRINCIPAL	1,0	1,0	0,0
219,5	ASISTENT MEDICAL	S	1,0	PRINCIPAL	1,0	0,0	1,0
220,5	ASISTENT MEDICAL	PL	1,0	PRINCIPAL	1,0	1,0	0,0
221,5	ASISTENT MEDICAL	PL	1,0	PRINCIPAL	1,0	1,0	0,0
222,5	ASISTENT MEDICAL	S	1,0	PRINCIPAL	1,0	1,0	0,0
223,5	ASISTENT MEDICAL	PL	1,0	PRINCIPAL	1,0	1,0	0,0
224,5	ASISTENT MEDICAL	S	1,0	PRINCIPAL	1,0	1,0	0,0
225,5	ASISTENT MEDICAL	S	1,0	PRINCIPAL	1,0	1,0	0,0
226,5	ASISTENT MEDICAL	PL	1,0	PRINCIPAL	1,0	1,0	0,0
227,5	ASISTENT MEDICAL	PL	1,0	GENERALIST	1,0	0,0	1,0
TOTAL PERS.SAN.MEDIU TREI TURE			19,0		19,0	15,0	4,0
228,5	ASISTENT MEDICAL	PL	1,0	PRINCIPAL	1,0	1,0	0,0
229,5	ASISTENT MEDICAL	S	1,0	GENERALIST	1,0	0,0	1,0
230,5	REGISTRATOR MEDICAL	M	1,0	DEBUTANT	1,0	0,0	1,0
TOTAL PERSONAL MED.POST FIX			3,0		3,0	1,0	2,0
231,5	INFIRMIERA	G	1,0		1,0	1,0	0,0
232,5	INFIRMIERA	G	1,0		1,0	1,0	0,0
233,5	INFIRMIERA	G	1,0	DEBUTANT	1,0	1,0	0,0
234,5	INFIRMIERA	G	1,0		1,0	1,0	0,0
235,5	INFIRMIERA	G	1,0		1,0	1,0	0,0
236,5	INFIRMIERA	G	1,0		1,0	1,0	0,0

Nr. Crt.	FUNCTIA,GRAD SAU TREAPTA	Nivel studii	Quantum post	Grad sau Treapta	Numar posturi aprobate	Numar posturi ocupate	Numar posturi vacante
237,5	INFIRMIERA	G	1,0		1,0	1,0	0,0
238,5	INFIRMIERA	G	1,0		1,0	1,0	0,0
239,5	INFIRMIERA	G	1,0		1,0	1,0	0,0
240,5	INFIRMIERA	G	1,0		1,0	1,0	0,0
241,5	INFIRMIERA	G	1,0		1,0	0,0	1,0
TOTAL INFIRMIERE			11,0		11,0	10,0	1,0
COMPARTIMENT ENDOSCOPIE BRONSICA							
Activitatea este asigurata de personalul unitatii							
SECTIA CLINICA DE PNEUMOLOGIE ADULTI II : 75 PATURI din care COMP. TBC 30 paturi SI PNEUMOLOGIE CRONICI 4 PATURI							
242,5	MEDIC SEF SECTIE	S	1,0	II	1,0	1,0	0,0
243,5	MEDIC	S	1,0	PRIMAR	1,0	0,0	1,0
244,5	MEDIC	S	1,0	PRIMAR	1,0	1,0	0,0
245,0	MEDIC	S	0,5	PRIMAR	0,5	0,5	0,0
246,0	MEDIC	S	1,0	PRIMAR	1,0	1,0	0,0
TOTAL PERS.SANIT.SUPERIOR			4,5		4,5	3,5	1,0
247,0	ASISTENT MEDICAL SEF	S	1,0	PRINCIPAL	1,0	1,0	0,0
248,0	ASISTENT MEDICAL	PL	1,0	PRINCIPAL	1,0	1,0	0,0
249,0	ASISTENT MEDICAL	S	1,0	PRINCIPAL	1,0	1,0	0,0
250,0	ASISTENT MEDICAL	PL	1,0	GENERALIST	1,0	1,0	0,0
251,0	ASISTENT MEDICAL	PL	1,0	PRINCIPAL	1,0	0,0	1,0
252,0	ASISTENT MEDICAL	S	1,0	PRINCIPAL	1,0	1,0	0,0
253,0	ASISTENT MEDICAL	S	1,0	PRINCIPAL	1,0	0,0	1,0
254,0	ASISTENT MEDICAL	S	1,0	PRINCIPAL	1,0	1,0	0,0
255,0	ASISTENT MEDICAL	S	1,0	PRINCIPAL	1,0	1,0	0,0
256,0	ASISTENT MEDICAL	S	1,0	PRINCIPAL	1,0	1,0	0,0
257,0	ASISTENT MEDICAL	S	1,0	PRINCIPAL	1,0	1,0	0,0
258,0	ASISTENT MEDICAL	S	1,0	PRINCIPAL	1,0	1,0	0,0
259,0	ASISTENT MEDICAL	S	1,0	PRINCIPAL	1,0	1,0	0,0
260,0	ASISTENT MEDICAL	S	1,0	PRINCIPAL	1,0	1,0	0,0
261,0	ASISTENT MEDICAL	PL	1,0	PRINCIPAL	1,0	1,0	0,0
262,0	ASISTENT MEDICAL	PL	1,0	GENERALIST	1,0	0,0	1,0
263,0	ASISTENT MEDICAL	PL	1,0	GENERALIST	1,0	0,0	1,0
264,0	KINETOTERAPEUT	S	1,0	DEBUTANT	1,0	1,0	0,0
TOTAL PERS.MED.TREI TURE			18,0		18,0	14,0	4,0
265,0	ASISTENT MEDICAL	S	1,0	PRINCIPAL	1,0	1,0	0,0
266,0	ASISTENT MEDICAL	PL	1,0	PRINCIPAL	1,0	1,0	0,0
267,0	REGISTRATOR MEDICAL	M	1,0	PRINCIPAL	1,0	0,0	1,0
TOTAL PERS.MED.POST FIX			3,0		3,0	2,0	1,0
268,0	INFIRMIERA	G	1,0		1,0	1,0	0,0
269,0	INFIRMIERA	M	1,0		1,0	0,0	1,0
270,0	INFIRMIERA	M	1,0		1,0	1,0	0,0
271,0	INFIRMIERA	G	1,0		1,0	1,0	0,0
272,0	INFIRMIERA	G	1,0		1,0	1,0	0,0
273,0	INFIRMIERA	G	1,0		1,0	1,0	0,0
274,0	INFIRMIERA	M	1,0		1,0	1,0	0,0
275,0	INFIRMIERA	G	1,0		1,0	1,0	0,0
276,0	INFIRMIERA	M	1,0		1,0	1,0	0,0
277,0	INFIRMIERA	G	1,0		1,0	0,0	1,0
TOTAL INFIRMIERE			10,0		10,0	8,0	2,0
278,0	INGRIJITOARE	G	1,0		1,0	1,0	0,0
279,0	INGRIJITOARE	G	1,0		1,0	1,0	0,0
TOTAL INGRIJITOARE			2,0		2,0	2,0	0,0
SECTIA CLINICA DE PNEUMOLOGIE COPII : 45 PATURI din care COMP.TBC 26 paturi							
280,0	MEDIC SEF SECTIE	S	1,0	II	1,0	0,0	1,0
281,0	MEDIC	S	1,0	PRIMAR	1,0	1,0	0,0
282,0	MEDIC	S	1,0	PRIMAR	1,0	1,0	0,0
283,0	MEDIC	S	1,0	PRIMAR	1,0	1,0	0,0
284,0	MEDIC	S	1,0	SPECIALIST	1,0	1,0	0,0
TOTAL MEDICI			5,0		5,0	4,0	1,0
285,0	ASISTENT MEDICAL SEF	S	1,0	PRINCIPAL	1,0	1,0	0,0
286,0	ASISTENT MEDICAL	S	1,0	PRINCIPAL	1,0	1,0	0,0
287,0	ASISTENT MEDICAL	PL	1,0	PRINCIPAL	1,0	1,0	0,0
288,0	ASISTENT MEDICAL	PL	1,0	PRINCIPAL	1,0	0,0	1,0
289,0	ASISTENT MEDICAL	S	1,0	PRINCIPAL	1,0	1,0	0,0
290,0	ASISTENT MEDICAL	S	1,0	PRINCIPAL	1,0	0,0	1,0
291,0	ASISTENT MEDICAL	PL	1,0	PRINCIPAL	1,0	1,0	0,0
292,0	ASISTENT MEDICAL	S	1,0	PRINCIPAL	1,0	1,0	0,0
293,0	ASISTENT MEDICAL	S	1,0	PRINCIPAL	1,0	1,0	0,0
294,0	ASISTENT MEDICAL	S	1,0	PRINCIPAL	1,0	1,0	0,0
295,0	ASISTENT MEDICAL	S	1,0	PRINCIPAL	1,0	1,0	0,0
296,0	ASISTENT MEDICAL	S	1,0	PRINCIPAL	1,0	1,0	0,0
297,0	ASISTENT MEDICAL	S	1,0	PRINCIPAL	1,0	1,0	0,0
TOTAL PERS.MED.TREI TURE			13,0		13,0	11,0	2,0

Nr. Crt.	FUNCTIA,GRAD SAU TREAPTA	Nivel studii	Cuquantum post	Grad sau Treapta	Numar posturi aprobate	Numar posturi ocupate	Numar posturi vacante
298,0	INFIRMIERA	G	1,0		1,0	0,0	1,0
299,0	INFIRMIERA	M	1,0		1,0	1,0	0,0
300,0	INFIRMIERA	G	1,0		1,0	1,0	0,0
301,0	INFIRMIERA	G	1,0		1,0	1,0	0,0
302,0	INFIRMIERA	G	1,0		1,0	0,0	1,0
303,0	INFIRMIERA	G	1,0		1,0	1,0	0,0
304,0	INFIRMIERA	G	1,0		1,0	1,0	0,0
305,0	INFIRMIERA	G	1,0		1,0	1,0	0,0
306,0	INFIRMIERA	M	1,0		1,0	1,0	0,0
307,0	INFIRMIERA	G	1,0		1,0	1,0	0,0
TOTAL INFIRMIERE			10,0		10,0	8,0	2,0
CABINET BOLI INFECTIOASE DISPENSARIZARE HEPATITA STERILIZARE							
308,0	ASISTENT MEDICAL	S	1,0	PRINCIPAL	1,0	1,0	0,0
309,0	ASISTENT MEDICAL	PL	1,0	PRINCIPAL	1,0	1,0	0,0
TOTAL PERS.MED.			2,0		2,0	2,0	0,0
CABINET BOLI INFECTIOASE VACCINARE ANTIRABICA							
Activitatea este asigurata de personalul unitatii							
CABINET O.R.L.							
310,0	MEDIC	S	1,0	PRIMAR	1,0	1,0	0,0
TOTAL PERSONAL SANITAR SUPERIOR			1,0		1,0	1,0	0,0
311,0	ASISTENT MEDICAL	S	1,0	PRINCIPAL	1,0	1,0	0,0
TOTAL PERSONAL MEDIU			1,0		1,0	1,0	0,0
CABINET CARDIOLOGIE							
312,0	MEDIC	S	1,0	PRIMAR	1,0	1,0	0,0
TOTAL PERSONAL SANITAR SUPERIOR			1,0		1,0	1,0	0,0
313,0	ASISTENT MEDICAL	PL	1,0	PRINCIPAL	1,0	1,0	0,0
TOTAL PERS. MED			1,0		1,0	1,0	0,0
CABINET NEUROLOGIE							
314,0	MEDIC	S	1,0	SPECIALIST	1,0	0,0	1,0
TOTAL PERSONAL SANITAR SUPERIOR			1,0		1,0	0,0	1,0
CABINET DIABET ZAHARAT, NUTRITIE SI BOLI METABOLICE							
315,0	MEDIC	S	1,0	SPECIALIST	1,0	0,0	1,0
TOTAL PERSONAL SANITAR SUPERIOR			1,0		1,0	0,0	1,0
SPITALIZARE DE ZI HIV/SIDA 25 PATURI							
316,0	MEDIC	S	1,0	PRIMAR	1,0	1,0	0,0
317,0	MEDIC SEF SECTIE	S	1,0	II	1,0	1,0	0,0
TOTAL PERSONAL SANITAR SUPERIOR			2,0		2,0	2,0	0,0
318,0	PSIHOLOG	S	1,0	PRINCIPAL	1,0	1,0	0,0
319,0	ASISTENT MEDICA SOCIAL	S	1,0	PRINCIPAL	1,0	1,0	0,0
TOTAL ALT PERSONAL SANITAR SUPERIOR			2,0		2,0	2,0	0,0
320,0	ASISTENT MEDICAL SEF	S	1,0	PRINCIPAL	1,0	1,0	0,0
321,0	ASISTENT MEDICAL	S	1,0	PRINCIPAL	1,0	1,0	0,0
322,0	ASISTENT MEDICAL	S	1,0	PRINCIPAL	1,0	1,0	0,0
323,0	ASISTENT MEDICAL	S	1,0	PRINCIPAL	1,0	1,0	0,0
324,0	ASISTENT MEDICAL	S	1,0	PRINCIPAL	1,0	1,0	0,0
325,0	REGISTRATOR MEDICAL	M	1,0		1,0	1,0	0,0
326,0	INGRIJITOARE	G	1,0		1,0	1,0	0,0
TOTAL PERS.SAN MEDIU POST FIX			7,0		7,0	7,0	0,0
CABINET DERMATOVENEROLOGIE HIV/SIDA							
327,0	MEDIC	S	1,0	PRIMAR	1,0	1,0	0,0
TOTAL PERSONAL SANITAR SUPERIOR			1,0		1,0	1,0	0,0
CABINET STOMATOLOGIE HIV/SIDA							
328,0	MEDIC	S	1,0	STOMATOLOG	1,0	1,0	0,0
329,0	MEDIC	S	1,0	STOMATOLOG	1,0	1,0	0,0
330,0	ASISTENT MEDICAL	S	1,0	GENERALIST	1,0	0,0	1,0
TOTAL PERSONAL SANITAR SUPERIOR			3,0		3,0	2,0	1,0
DISPENSAR T.B.C.							
331,0	MEDIC	S	1,0	SPECIALIST	1,0	0,0	1,0
332,0	MEDIC	S	1,0	PRIMAR	1,0	1,0	0,0
333,0	MEDIC	S	1,0	PRIMAR	1,0	1,0	0,0
334,0	MEDIC	S	1,0	PRIMAR	1,0	1,0	0,0
335,0	MEDIC	S	1,0	PRIMAR	1,0	1,0	0,0
336,0	MEDIC coordonator	S	1,0	PRIMAR	1,0	1,0	0,0
337,0	MEDIC	S	1,0	PRIMAR	1,0	1,0	0,0
TOTAL PERS.SAN.SUP			7,0		7,0	6,0	1,0
338,0	ASISTENT MEDICAL	S	1,0	PRINCIPAL	1,0	1,0	0,0
339,0	ASISTENT MEDICAL	S	1,0	PRINCIPAL	1,0	1,0	0,0
340,0	ASISTENT MEDICAL	S	1,0	PRINCIPAL	1,0	1,0	0,0

Nr. Crt.	FUNCTIA,GRAD SAU TREAPTA	Nivel studii	Quantum post	Grad sau Treapta	Numar posturi aprobate	Numar posturi ocupate	Numar posturi vacante
341.0	ASISTENT MEDICAL	PL	1,0	PRINCIPAL	1,0	1,0	0,0
342.0	ASISTENT MEDICAL coordonator	S	1,0	PRINCIPAL	1,0	1,0	0,0
343.0	ASISTENT MEDICAL	S	1,0	PRINCIPAL	1,0	1,0	0,0
344.0	ASISTENT MEDICAL	S	1,0	PRINCIPAL	1,0	1,0	0,0
345.0	ASISTENT MEDICAL	S	1,0	PRINCIPAL	1,0	1,0	0,0
346.0	ASISTENT MEDICAL	PL	1,0	PRINCIPAL	1,0	1,0	0,0
347.0	ASISTENT MEDICAL	S	1,0	PRINCIPAL	1,0	1,0	0,0
348.0	REGISTRATOR MEDICAL	M	1,0	PRINCIPAL	1,0	1,0	0,0
349.0	REGISTRATOR MEDICAL	M	1,0	PRINCIPAL	1,0	1,0	0,0
350.0	ASISTENT MEDICAL	PL	1,0	PRINCIPAL	1,0	1,0	0,0
351.0	INFORMATICIAN	S	1,0		1,0	1,0	0,0
TOTAL PERS.SANIT.MEDIU			14,0		14,0	14,0	0,0
352.0	INGRIJITOARE	G	1,0		1,0	1,0	0,0
353.0	INGRIJITOARE	M	1,0		1,0	1,0	0,0
TOTAL INGRIJITOARE			2,0		2,0	2,0	0,0
CABINET EXPLORARI FUNCTIONALE							
354.0	ASISTENT MEDICAL	PL	1,0	PRINCIPAL	1,0	1,0	0,0
TOTAL EXP.FUNCT			1,0		1,0	1,0	0,0
LABORATOR ANALIZE MEDICALE							
355.0	MEDIC SEF LABORATOR	S	1,0	II	1,0	1,0	0,0
356.0	MEDIC	S	1,0	PRIMAR	1,0	1,0	0,0
357.0	MEDIC	S	1,0	PRIMAR	1,0	1,0	0,0
358.0	MEDIC	S	1,0	PRIMAR	1,0	1,0	0,0
359.0	MEDIC	S	1,0	PRIMAR	1,0	1,0	0,0
360.0	MEDIC	S	1,0	PRIMAR	1,0	1,0	0,0
361.0	MEDIC	S	1,0	SPECIALIST	1,0	0,0	1,0
TOTAL PERSONAL SANITAR SUPERIOR			7,0		7,0	6,0	1,0
362.0	BIOLOG	S	1,0	PRINCIPAL	1,0	1,0	0,0
363.0	BIOLOG	S	1,0	PRINCIPAL	1,0	0,0	1,0
TOTAL ALT PERS.SUPERIOR			2,0		2,0	1,0	1,0
364.0	ASISTENT LABORATOR	PL	1,0	PRINCIPAL	1,0	1,0	0,0
365.0	ASISTENT LABORATOR	PL	1,0	PRINCIPAL	1,0	1,0	0,0
366.0	ASISTENT LABORATOR	PL	1,0	PRINCIPAL	1,0	0,0	1,0
367.0	ASISTENT LABORATOR	PL	1,0	PRINCIPAL	1,0	1,0	0,0
368.0	ASISTENT LABORATOR	S	1,0	PRINCIPAL	1,0	1,0	0,0
369.0	ASISTENT LABORATOR	PL	1,0	PRINCIPAL	1,0	1,0	0,0
370.0	ASISTENT LABORATOR	PL	1,0	PRINCIPAL	1,0	1,0	0,0
371.0	ASISTENT LABORATOR	PL	1,0	PRINCIPAL	1,0	1,0	0,0
372.0	ASISTENT LABORATOR	S	1,0	PRINCIPAL	1,0	1,0	0,0
373.0	ASISTENT LABORATOR	S	1,0	PRINCIPAL	1,0	1,0	0,0
374.0	ASISTENT LABORATOR	PL	1,0	PRINCIPAL	1,0	1,0	0,0
375.0	ASISTENT LABORATOR SEF	PL	1,0	PRINCIPAL	1,0	1,0	0,0
376.0	ASISTENT LABORATOR	PL	1,0	PRINCIPAL	1,0	1,0	0,0
377.0	ASISTENT LABORATOR	S	1,0	PRINCIPAL	1,0	1,0	0,0
378.0	ASISTENT LABORATOR	PL	1,0	PRINCIPAL	1,0	1,0	0,0
379.0	ASISTENT MEDICAL	PL	1,0	PRINCIPAL	1,0	1,0	0,0
380.0	REGISTRATOR MEDICAL	M	1,0		1,0	1,0	0,0
TOTAL PERS.SANITAR MEDIU			17,0		17,0	16,0	1,0
381.0	INGRIJITOARE	G	1,0		1,0	1,0	0,0
382.0	INGRIJITOARE	G	1,0		1,0	1,0	0,0
TOTAL INGRIJITOARE CURATENIE			2,0		2,0	2,0	0,0
COMPARTIMENT BK							
383.0	MEDIC	S	1,0	PRIMAR	1,0	1,0	0,0
384.0	MEDIC	S	1,0	SPECIALIST	1,0	1,0	0,0
TOTAL PERS.SAN.SUP			2,0		2,0	2,0	0,0
385.0	BIOLOG	S	1,0	PRINCIPAL	1,0	1,0	0,0
386.0	BIOLOG	S	1,0	SPECIALIST	1,0	1,0	0,0
387.0	BIOLOG	S	1,0		1,0	1,0	0,0
TOTAL ALT PERS.SUPERIOR			3,0		3,0	3,0	0,0
388.0	ASISTENT LABORATOR	PL	1,0	PRINCIPAL	1,0	1,0	0,0
389.0	ASISTENT LABORATOR	S	1,0	PRINCIPAL	1,0	1,0	0,0
TOTAL PERS.SANIT. POST FIX			2,0		2,0	2,0	0,0
390.0	INGRIJITOARE	G	1,0		1,0	1,0	0,0
TOTAL INGRIJITOARE			1,0		1,0	1,0	0,0
LABORATOR RADIOLOGIE SI IMAGISTICA MEDICALA							
391.0	MEDIC SEF LABORATOR	S	1,0	II	1,0	0,0	1,0
392.0	MEDIC	S	1,0	PRIMAR	1,0	1,0	0,0
393.0	MEDIC	S	1,0	SPECIALIST	1,0	0,0	1,0
393,5	MEDIC	S	0,5	PRIMAR	0,5	0,0	0,5
394,5	MEDIC (TBC)	S	1,0	PRIMAR	1,0	1,0	0,0

Nr. Crt.	FUNCTIA,GRAD SAU TREAPTA	Nivel studii	Quantum post	Grad sau Treapta	Numar posturi aprobate	Numar posturi ocupate	Numar posturi vacante
395,5	MEDIC (TBC)	S	1,0	PRIMAR	1,0	1,0	0,0
TOTAL PERS.SANIT.SUPERIOR			5,5		5,5	3,0	2,5
396,5	FIZICIAN	S	1,0	FIZICIAN	1,0	1,0	0,0
TOTAL ALT PERS. SANIT. SUPERIOR			1,0		1,0	1,0	0,0
397,5	ASISTENT RADIOLOGIE	PL	1,0	PRINCIPAL	1,0	1,0	0,0
398,5	ASISTENT RADIOLOGIE	PL	1,0	PRINCIPAL	1,0	1,0	0,0
399,5	ASISTENT RADIOLOGIE(TBC)	PL	1,0	PRINCIPAL	1,0	1,0	0,0
400,5	ASISTENT RADIOLOGIE(TBC)	PL	1,0	PRINCIPAL	1,0	1,0	0,0
401,5	ASISTENT RADIOLOGIE(TBC)	PL	1,0	PRINCIPAL	1,0	1,0	0,0
402,5	ASISTENT RADIOLOGIE(TBC)	PL	1,0	PRINCIPAL	1,0	1,0	0,0
403,5	ASISTENT RADIOLOGIE(TBC)	PL	1,0	PRINCIPAL	1,0	1,0	0,0
404,5	ASISTENT RADIOLOGIE(TBC)	PL	1,0	PRINCIPAL	1,0	1,0	0,0
405,5	ASISTENT RADIOLOGIE	S	1,0	DEBUTANT	1,0	0,0	1,0
406,5	ASISTENT RADIOLOGIE	S	1,0	GENERALIST	1,0	0,0	1,0
407,5	ASISTENT MEDICAL	S	1,0	PRINCIPAL	1,0	0,0	1,0
408,5	ASISTENT MEDICAL	S	1,0	GENERALIST	1,0	0,0	1,0
409,5	ASISTENT MEDICAL	PL	1,0	PRINCIPAL	1,0	0,0	1,0
410,5	ASISTENT MEDICAL	PL	1,0	GENERALIST	1,0	0,0	1,0
TOTAL PERS.SANIT.MEDIU			14,0		14,0	8,0	6,0
411,5	INGRIJITOARE	G	1,0		1,0	1,0	0,0
TOTAL INGRIJITOARE			1,0		1,0	1,0	0,0
LABORATOR ANATOMIE PATOLOGICA							
412,5	MEDIC	S	1,0	PRIMAR	1,0	1,0	0,0
413,0	MEDIC	S	0,5	SPECIALIST	0,5	0,5	0,0
TOTAL PERS.SANIT.SUPERIOR			1,5		1,5	1,5	0,0
414,0	ASISTENT LABORATOR	S	1,0	PRINCIPAL	1,0	1,0	0,0
415,0	ASISTENT LABORATOR autopsier	PL	1,0	PRINCIPAL	1,0	1,0	0,0
TOTAL PERS.MED.			2,0		2,0	2,0	0,0
416,0	INGRIJITOARE	G	1,0		1,0	1,0	0,0
TOTAL INGRIJITOARE			1,0		1,0	1,0	0,0
MEDIC INTREPRINDERE							
417,0	MEDIC	S	1,0	SPECIALIST	1,0	1,0	0,0
TOTAL MED.INTREPRINDERE			1,0		1,0	1,0	0,0
FARMACIE							
418,0	FARMACIST SEF	S	1,0	II	1,0	1,0	0,0
419,0	FARMACIST	S	1,0	PRINCIPAL	1,0	1,0	0,0
420,0	FARMACIST	S	1,0	PRINCIPAL	1,0	1,0	0,0
421,0	FARMACIST	S	1,0	SPECIALIST	1,0	1,0	0,0
TOTAL FARMACISTI			4,0		4,0	4,0	0,0
422,0	ASISTENT FARMACIE	PL	1,0	PRINCIPAL	1,0	1,0	0,0
423,0	ASISTENT FARMACIE	PL	1,0	PRINCIPAL	1,0	1,0	0,0
424,0	ASISTENT FARMACIE	S	1,0	PRINCIPAL	1,0	1,0	0,0
425,0	ASISTENT FARMACIE	PL	1,0	PRINCIPAL	1,0	1,0	0,0
426,0	ASISTENT FARMACIE	PL	1,0	GENERALIST	1,0	1,0	0,0
TOTAL PERSONAL MEDIU			5,0		5,0	5,0	0,0
427,0	INGRIJITOARE	G	1,0		1,0	0,0	1,0
TOTAL INGRIJITOARE			1,0		1,0	0,0	1,0
APARAT FUNCTIONAL							
SERVICIU RESURSE UMANE							
428,0	ŞEF SERVICIU	S	1,0	II	1,0	1,0	0,0
429,0	ECONOMIST	S	1,0	IA	1,0	1,0	0,0
430,0	ECONOMIST	S	1,0	IA	1,0	1,0	0,0
431,0	ECONOMIST	S	1,0	I	1,0	1,0	0,0
432,0	ECONOMIST	S	1,0	I	1,0	1,0	0,0
TOTAL SERVICIU RESURSE UMANE			5,0		5,0	5,0	0,0
BIROU INFORMATICA							
433,0	ŞEF BIROU	S	1,0	II	1,0	1,0	0,0
434,0	ANALIST PROGRAMATOR	S	1,0	IA	1,0	1,0	0,0
435,0	ANALIST PROGRAMATOR	S	1,0	IA	1,0	1,0	0,0
TOTAL INFORMATICA			3,0		3,0	3,0	0,0
SERVICIU STATISTICĂ ŞI EVALUARE MEDICALĂ							
436,0	ŞEF SERVICIU	S	1,0	II	1,0	0,0	1,0
437,0	OPERATOR CONTROLOR DATE	M	1,0	I	1,0	1,0	0,0
438,0	OPERATOR CONTROLOR DATE	M	1,0	I	1,0	1,0	0,0
439,0	ECONOMIST	S	1,0	IA	1,0	1,0	0,0
440,0	REFERENT	M	1,0	IA	1,0	1,0	0,0
441,0	ECONOMIST	S	1,0	IA	1,0	1,0	0,0
442,0	INFORMATICIAN	S	1,0	I	1,0	1,0	0,0
443,0	ECONOMIST	S	1,0	II	1,0	1,0	0,0
444,0	ECONOMIST	S	1,0	IA	1,0	1,0	0,0

Nr. Crt.	FUNCTIA,GRAD SAU TREAPTA	Nivel studii	Cuantiu post	Grad sau Treapta	Numar posturi aprobate	Numar posturi ocupate	Numar posturi vacante
TOTAL SERVICIU STATISTICĂ ȘI EVALUARE MEDICALĂ			9,0		9,0	8,0	1,0
SERVICIU MANAGEMENT AL CALITĂȚII SERVICIILOR DE SANATATE							
445,0	SEF SERVICIU	S	1,0	I	1,0	0,0	1,0
446,0	MEDIC	S	1,0	SPECIALIST	1,0	0,0	1,0
447,0	REFERENT DE SPECIALITATE	S	1,0	I	1,0	0,0	1,0
448,0	REFERENT DE SPECIALITATE	S	1,0	IA	1,0	1,0	0,0
449,0	REFERENT DE SPECIALITATE	S	1,0	I	1,0	1,0	0,0
450,0	REFERENT DE SPECIALITATE	S	1,0	IA	1,0	1,0	0,0
451,0	REFERENT DE SPECIALITATE	S	1,0	II	1,0	0,0	1,0
TOTAL SERVICIU MANAGEMENT AL CALITĂȚII SERVICIILOR DE SAN			7,0		7,0	3,0	4,0
COMPARTIMENT JURIDIC							
452,0	CONSILIER JURIDIC	S	1,0	IA	1,0	1,0	0,0
TOTAL COMP JURIDIC			1,0		1,0	1,0	0,0
COMPARTIMENT AUDIT PUBLIC INTERN							
453,0	AUDITOR	S	1,0	IA	1,0	1,0	0,0
TOTAL COMPARTIMENT AUDIT PUBLIC INTERN			1,0		1,0	1,0	0,0
COMPARTIMENT CONFESIONAL							
454,0	PREOT	S	1,0	I	1,0	1,0	0,0
TOTAL COMPARTIMENT CONFESIONAL			1,0		1,0	1,0	0,0
SERVICIUL FINANCIAR-CONTABILITATE							
455,0	SEF SERVICIU	S	1,0	II	1,0	0,0	1,0
456,0	ECONOMIST	S	1,0	IA	1,0	1,0	0,0
457,0	ECONOMIST	S	1,0	IA	1,0	1,0	0,0
458,0	ECONOMIST	S	1,0	IA	1,0	1,0	0,0
459,0	ECONOMIST	S	1,0	IA	1,0	1,0	0,0
TOTAL SERVICIU FINANCIAR CONTABILITATE			5,0		5,0	4,0	1,0
SERVICIUL APROVIZIONARE - TRASNPORTURI							
460,0	SEF SERVICIU	S	1,0	II	1,0	0,0	1,0
461,0	SEF DEPOZIT MAGAZINER	M	1,0	I	1,0	0,0	1,0
462,0	ECONOMIST	S	1,0	IA	1,0	1,0	0,0
463,0	ECONOMIST	S	1,0	IA	1,0	1,0	0,0
464,0	ECONOMIST	S	1,0	IA	1,0	1,0	0,0
465,0	MAGAZINER	M	1,0		1,0	1,0	0,0
466,0	MAGAZINER	M	1,0		1,0	0,0	1,0
TOTAL APROVIZIONARE - TRASNPORTURI			7,0		7,0	4,0	3,0
COMPARTIMENT TRANSPORTURI							
467,0	SOFER (AUTOSANITARA)	M	1,0	II	1,0	0,0	1,0
468,0	SOFER (AUTOSANITARA)	M	1,0	II	1,0	1,0	0,0
469,0	SOFER	M	1,0	II	1,0	1,0	0,0
470,0	SOFER (AUTOSANITARA)	M	1,0	II	1,0	1,0	0,0
471,0	SOFER (AUTOSANITARA)	M	1,0	II	1,0	1,0	0,0
472,0	SOFER (AUTOSANITARA)	M	1,0	II	1,0	1,0	0,0
473,0	SOFER (AUTOSANITARA)	M	1,0	II	1,0	1,0	0,0
TOTAL COMPARTIMENT TRANSPORTURI			7,0		7,0	6,0	1,0
BIROUL ACHIZIȚII PUBLICE, CONTRACTARE							
474,0	SEF BIROU	S	1,0	II	1,0	1,0	0,0
475,0	ECONOMIST	S	1,0	IA	1,0	1,0	0,0
476,0	CONSILIER JURIDIC	S	1,0	IA	1,0	1,0	0,0
TOTAL BIROU ACHIZIȚII PUBLICE, CONTRACTARE			3,0		3,0	3,0	0,0
COMPARTIMENT ADMINISTRATIV- SECURITATEA MUNCII, PSI, PROTECTIE CIVILĂ ȘI SITUAȚII DE URGENȚĂ							
477,0	INGINER	S	1,0	IA	1,0	1,0	0,0
478,0	CASIER	M	1,0	I	1,0	1,0	0,0
TOTALCOMPARTIMENT ADMINISTRATIV- SECURITATEA MUNCII, PSI			2,0		2,0	2,0	0,0
SERVICIUL PRIVAT PENTRU SITUAȚII DE URGENTA							
479,0	SEF SERVICIU	S	1,0		1,0	0,0	1,0
480,0	POMPIER SERVANT	M	1,0	DEBUTANT	1,0	0,0	1,0
481,0	POMPIER SERVANT	M	1,0	DEBUTANT	1,0	0,0	1,0
482,0	POMPIER SERVANT	M	1,0		1,0	0,0	1,0
483,0	POMPIER SERVANT	M	1,0		1,0	0,0	1,0
484,0	POMPIER SERVANT	M	1,0		1,0	0,0	1,0
TOTAL SERVICIUL PRIVAT PENTRU SITUAȚII DE URGENTA			6,0		6,0	0,0	6,0
BLOC LENJERIE SPALATORIE							
485,0	SPALATOREASA	M	1,0	II	1,0	0,0	1,0
486,0	SPALATOREASA	M	1,0	II	1,0	1,0	0,0
487,0	SPALATOREASA	M	1,0	II	1,0	1,0	0,0
488,0	SPALATOREASA	M	1,0	II	1,0	0,0	1,0
489,0	SPALATOREASA	M	1,0	II	1,0	1,0	0,0
490,0	MUNCITOR (LENJEREASA)	M	1,0	II	1,0	1,0	0,0
TOTAL BLOC LENJERIE SPALATORIE			6,0		6,0	4,0	2,0
DESERVIRE							

Nr. Crt.	FUNCTIA,GRAD SAU TREAPTA	Nivel studii	Quantum post	Grad sau Treapta	Numar posturi aprobate	Numar posturi ocupate	Numar posturi vacante
491,0	PORTAR - I	M	1,0	I	1,0	1,0	0,0
492,0	PORTAR - I	M	1,0	I	1,0	1,0	0,0
493,0	PORTAR - I	M	1,0	I	1,0	1,0	0,0
494,0	PORTAR - I (MUNCITOR I)	M	1,0	I	1,0	1,0	0,0
495,0	PORTAR I	M	1,0	I	1,0	1,0	0,0
496,0	PORTAR-I	M	1,0	I	1,0	1,0	0,0
497,0	ARHIVAR I	M	1,0	I	1,0	1,0	0,0
498,0	CURIER I	M	1,0	I	1,0	1,0	0,0
TOTAL DESERVIRE			8,0		8,0	8,0	0,0
COMPARTIMENT DIETETICA SI BLOC ALIMENTAR							
499,0	ASISTENT MEDICAL	PL	1,0	PRINCIPAL	1,0	1,0	0,0
500,0	ASISTENT MEDICAL	PL	1,0	PRINCIPAL	1,0	1,0	0,0
501,0	MUNCITOR (BUCATAR)	M	1,0	I	1,0	1,0	0,0
502,0	MUNCITOR (BUCATAR)	M	1,0	I	1,0	1,0	0,0
503,0	MUNCITOR (BUCATAR)	M	1,0	I	1,0	1,0	0,0
504,0	MUNCITOR (BUCATAR)	M	1,0	I	1,0	0,0	1,0
505,0	MUNCITOR (BUCATAR)	M	1,0	I	1,0	1,0	0,0
506,0	MUNCITOR (BUCATAR)	M	1,0	I	1,0	1,0	0,0
507,0	MUNCITOR (BUCATAR)	M	1,0	I	1,0	1,0	0,0
508,0	MUNCITOR (BUCATAR)	M	1,0	IV	1,0	1,0	0,0
509,0	MUNCITOR (BUCATAR)	M	1,0	II	1,0	0,0	1,0
510,0	MUNCITOR (BUCATAR)	M	1,0	IV	1,0	1,0	0,0
511,0	MUNCITOR (BUCATAR)	M	1,0	IV	1,0	1,0	0,0
512,0	MUNCITOR (BUCATAR)	M	1,0	IV	1,0	1,0	0,0
TOTAL COMPARTIMENT DIETETICA SI BLOC ALIMENTAR			14,0		14,0	12,0	2,0
COMPARTIMENT LIFTURI - CENTRALA TELEFONICA							
513,0	MUNCITOR (LIFTIER)	M	1,0	III	1,0	1,0	0,0
514,0	MUNCITOR (LIFTIER)	M	1,0	I	1,0	1,0	0,0
515,0	MUNCITOR (LIFTIER)	M	1,0	III	1,0	1,0	0,0
516,0	MUNCITOR (LIFTIER)	M	1,0	III	1,0	1,0	0,0
517,0	MUNCITOR (LIFTIER)	M	1,0	IV	1,0	1,0	0,0
518,0	MUNCITOR (LIFTIER)	M	1,0	II	1,0	1,0	0,0
TOTAL COMPARTIMENT LIFTURI - CENTRALA TELEFONICA			6,0		6,0	6,0	0,0
ACTIVITATE DE FRIZERIE							
519,0	MUNCITOR (FRIZER)	M	1,0	II	1,0	1,0	0,0
TOTAL FRIZERIE			1,0		1,0	1,0	0,0
APARATURA MEDICALA							
520,0	TEHNICIAN APARATURA MEDICALA	PL	1,0	PRINCIPAL	1,0	1,0	0,0
TOTAL APARATURA MEDICALA			1,0		1,0	1,0	0,0
COMPARTIMENT INTRETINERE CLADIRI, OXIGEN ,INSTALATII APA, LUMINA SI INCALZIRE, INTRETINERE SPATII VERZI							
521,0	MUNCITOR (INSTALATOR)	M	1,0	IV	1,0	1,0	0,0
522,0	MUNCITOR (INSTALATOR)	M	1,0	I	1,0	1,0	0,0
523,0	MUNCITOR (ELECTRICIAN)	M	1,0	I	1,0	1,0	0,0
524,0	MUNCITOR (ELECTRICIAN)	M	1,0	IV	1,0	1,0	0,0
525,0	MUNCITOR (LACATUS MECANIC)	M	1,0	I	1,0	1,0	0,0
526,0	MUNCITOR (LACATUS MECANIC)	M	1,0	I	1,0	1,0	0,0
527,0	MUNCITOR (LACATUS MECANIC)	M	1,0	II	1,0	1,0	0,0
528,0	MUNCITOR (SUDOR)	M	1,0	II	1,0	1,0	0,0
529,0	MUNCITOR (LACATUS MECANIC)	M	1,0	I	1,0	1,0	0,0
530,0	MUNCITOR	M	1,0	I	1,0	1,0	0,0
531,0	MUNCITOR	M	1,0	I	1,0	0,0	1,0
532,0	MUNCITOR	M	1,0	I	1,0	1,0	0,0
TOTAL INTRETINERE CLADIRI, OXIGEN , INSTALATII APA, LUMINA S			12,0		12,0	11,0	1,0
COMPARTIMENT TEHNIC							
533,0	INGINER	S	1,0	I	1,0	1,0	0,0
534,0	INGINER	S	1,0	II	1,0	1,0	0,0
TOTAL COMPARTIMENT TEHNIC			2,0		2,0	2,0	0,0
COMP. CLORINARE (EPURARE APE UZATE SI REZIDUALE)							
535,0	SUBINGINER CHIMIST	SSD	1,0	SUBINGINER	1,0	1,0	0,0
TOTAL COMP. CLORINARE (EPURARE APE UZATE SI REZIDUALE)			1,0		1,0	1,0	0,0
EXPLOATARE CENTRALA TERMICA							
536,0	MUNCITOR (FOCHIST)	M	1,0	I	1,0	1,0	0,0
537,0	MUNCITOR (FOCHIST)	M	1,0	I	1,0	0,0	1,0
538,0	MUNCITOR (FOCHIST)	M	1,0	I	1,0	1,0	0,0
539,0	MUNCITOR (FOCHIST)	M	1,0	IV	1,0	0,0	1,0
540,0	MUNCITOR (FOCHIST)	M	1,0	II	1,0	1,0	0,0
541,0	MUNCITOR (FOCHIST)	M	1,0	I	1,0	1,0	0,0
TOTAL EXPLOATARE CENTRALA TERMICA			6,0		6,0	4,0	2,0
TOTAL GENERAL			541,0		541,0	448,5	92,5
* IN LABORATORUL DE RADIOLOGIE SI IMAGISTICA MEDICALA SUNT INCLUSI SI MEDICII SI ASISTENTII CARE DESERVESC DISPENSARUL TBC (TBC)*							

Nr. Crt.	FUNCTIA,GRAD SAU TREAPTA	Nivel studii	Cuatum post	Grad sau Treapta	Numar posturi aprobate	Numar posturi ocupate	Numar posturi vacante
----------	--------------------------	--------------	-------------	------------------	------------------------	-----------------------	-----------------------

RAPORT DE AVIZARE

Având în vedere:

-Referatul de aprobare nr. 113521/22.06.2022,

-Raportul nr. 115735/27.06.2022 privind modificarea Hotărârii Consiliului Local al municipiului Craiova nr. 253/2022, referitoare la aprobarea organigramei și statului de funcții ale Spitalului Clinic de Boli Infecțioase și Pneumoftiziologie „Victor Babeș” Craiova,

-În conformitate cu prevederile Ordonanței de Urgență nr. 57/2019 privind Codul Administrativ, cu modificările și completările ulterioare, Legii nr. 95/2006, republicată, privind reforma în domeniul sănătății, cu modificările și completările ulterioare, Legii nr. 53/2003, republicată – Codul Muncii, cu modificările și completările ulterioare, Ordinului nr. 1312/250/2020 privind organizarea și funcționarea structurii de management al calității serviciilor de sănătate în cadrul unităților sanitare cu paturi și serviciilor de ambulanță, în procesul de implementare a sistemului de management al calității serviciilor de sănătate și siguranței pacientului, Ordinului nr. 75/2019 pentru aprobarea Criteriilor de performanță privind constituirea, încadrarea și dotarea serviciilor voluntare și a serviciilor private pentru situații de urgență, cu modificările și completările ulterioare și Ordinului nr. 1224/2010 privind aprobarea normativelor de personal pentru asistența medicală spitalicească, precum și pentru modificarea și completarea Ordinului ministrului sănătății publice nr. 1.778/2006 privind aprobarea normativelor de personal, cu modificările și completările ulterioare, HCL 253/2022,

-Nota de fundamentare nr. 8066/2022 înregistrată la Consiliul Local al municipiului Craiova sub numărul 107/2022, adresa nr. 9032/24.06.2022, înregistrată la autoritatea locală sub nr.115706/27.06.2022, a Spitalului Clinic de Boli Infecțioase și Pneumoftiziologie „Victor Babeș” Craiova prin care a comunicat avizul Ministerului Sănătății,

- În conformitate cu prevederile art. 129 alin. 2 lit. “a” și alin. 3 lit. “c”, coroborat cu art. 196 alin 1 lit a din Ordonanța de Urgență nr. 57/2019 privind Codul administrativ, cu modificările și completările ulterioare

- Potrivit Legii nr. 514/2003 privind organizarea si exercitarea profesiei de consilier juridic;

AVIZĂM FAVORABIL

proponerea Serviciului Resurse Umane privind modificarea Hotărârii Consiliului Local al municipiului Craiova nr. 253/2022, referitoare la aprobarea organigramei și statului de funcții ale Spitalului Clinic de Boli Infecțioase și Pneumoftiziologie „Victor Babeș” Craiova.

Director Executiv,
Ovidiu Mischianu

Îmi asum responsabilitatea privind realitatea
si legalitatea in solidar cu intocmitorul in scrisului
Semnatura:

Intocmit,
Cons.jur.Lia Martha Toncea

Imi asum responsabilitatea privind legalitatea actului
administrativ
Semnatura:

NR.....

CATRE
CONSILIUL LOCAL AL MUNICIPIULUI CRAIOVA

Va inaintam alaturat spre aprobare statul de functii al unitatii noastre, si organigrama, valabile cu 01.07.2022 intocmit cu respectarea numarului mediu de posturi stabilit de managerul unitatii pentru asistenta medicala spitaliceasca si ambulatorie si a numarului mediu de posturi aprobat de Ministerul Sanatatii pentru asistenta medicala finantata de la Bugetul de Stat – Capitolul Transferuri.

Numarul mediu de posturi , s-a stabilit de catre Managerul spitalului in conformitate cu prevederile art. 185 din Legea 95/2006 privind reforma in domeniul sanatatii si a normativelor de personal in vigoare (Ordin MS nr. 1224/2010), si a numarului de rezidenti distribuiti de Ministerul Sanatatii (pe locuri, nu pe posturi).

Posturi finantate din Fondul National Unic de Asigurari de Sanatate in asistenta medicala spitaliceasca:

Nr. Crt.	Nr. Total de posturi pe 2021	Din care	
		Personal sanitar (medici, alt personal superior sanitar si personal mediu sanitar)	Personal conducere,auxiliar sanitar, tehnic, economic, administrativ si muncitori
1	499	270 din care:	229 din care:
2		61 medici	114 personal auxiliar
3		10 alt personal superior	28 tesa
4		199 personal mediu	45 muncitori
			7 soferi
5			4 Conducere
6			9 statistica Şi evaluare medicala
7			7 management calitate servicii
8			1 preot
9			8 deservire
10			6 serviciu privat situatii urgenta

Posturi finantate de la Bugetul de Stat – Capitolul Transferuri:

Nr. Crt.	Nr. Total de posturi pe 2021	Din care	
		Personal sanitar (medici, alt personal superior sanitar si personal mediu sanitar)	Personal auxiliar sanitar, tehnic, economic, administrativ si muncitori
1	228 (din care 186 rezidenti pe loc)	225 din care:	3 din care:
2		11 medici	3 personal auxiliar
3		3 alt personal superior	-
4		25 personal mediu	-
5		186 medici rezidenti pe loc	

Manager
Dr. Turcu Adina Andreea

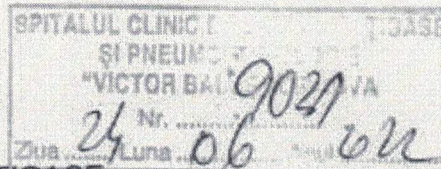
Sef Serviciu Resurse Umane
C.J. Buliteanu Veronica



MINISTERUL SĂNĂTĂȚII

Direcția Generală Resurse Umane, Structuri și Politici Salariale
 Serviciul Management și Structuri Sanitare
 Compartiment Structuri Sanitare

Nr. REG1/12533/SMSS3803/3970/4130/AR9896/10477/24.06.2022



CĂTRE SPITALUL CLINIC DE BOLI INFECȚIOASE
ȘI PNEUMOPTIZIOLOGIE "VICTOR BABEȘ" CRAIOVA
Calea București nr. 126, Craiova, județul Dolj
Email: vbabes@rdscv.ro

În atenția doamnei manager, Ș.L. Dr. Adina Andreea TURCU

Urmare adresei dvs. nr. 8515/2022, avizată de conducerea Consiliului Local Craiova, în conformitate cu atribuțiile prevăzute la art. 4 alin.(1) pct. 37 din H.G. nr. 144/2010 privind organizarea și funcționarea Ministerului Sănătății, cu modificările și completările ulterioare și cu prevederile art.172, alin.(7) din Legea nr. 95/2006 privind reforma în domeniul sănătății, republicată, cu modificările și completările ulterioare, conducerea Ministerului Sănătății a avizat completarea structurii medicale organizatorice a Spitalului Clinic de Boli Infecțioase și Pneumoftiziologie "Victor Babeș" Craiova, cu sediul în municipiul Craiova, str. Calea București nr. 126, cu următoarele:

- Un cabinet medical de specialitate – neurologie
- Un cabinet medical de specialitate – diabet zaharat, nutriție și boli metabolice.

Totodată, vă comunicăm faptul că, ulterior organizării acestor cabinete medicale, este necesar să se asigure prin statul de funcții, minimum necesar de posturi, prevăzut de dispozițiile O.M.S. nr.1224.2010, cu modificările și completările ulterioare.

DIRECTOR GENERAL
DOINA DIANA TENEA



Șef Serviciu
Mihaela DOBRE

Întocmit,
Consilier principal
Luminița V



**SPITALUL CLINIC DE BOLI
INFECȚIOASE ȘI
PNEUMOFTIZIOLOGIE
„VICTOR BABEȘ“ CRAIOVA**



Adresa: Bvd. Calea București , nr.126
Tel: +40251-542.333, Fax: +40251-543157
Web: www.vbabes-cv.ro, E-mail: spital@vbabes-cv.ro

Fundamentare Stat Functii 2022

Normativul Spitalului Clinic de Boli Infecțioase și Pneumoftiziologie Victor Babeș Craiova este stabilit , la un număr mediu de posturi, în conformitate cu prevederile art. 185 din Legea 95/2006 privind reforma în domeniul sănătății și a normativelor de personal în vigoare (Ordin MS nr. 1224/2010).

Astfel pe parte medicală , conform Anexei nr.1 din normativul mai sus menționat - asistentă la paturi s-a calculat la medici la un număr de 10 paturi (exemplu 75 paturi : 10 = 7,5 medici), la asistente la 10 paturi (exemplu – 75 paturi : 10 X 3 = 22 asistente la 3 ture), iar la infirmiere la 12.5 paturi (exemplu 75 paturi : 12.5 X 3 = 18 infirmiere la 3 ture .La posturile fixe s-a calculat pentru asistente astfel : 15.5 paturi (exemplu 75 paturi : 15,5 X 3 = 14).

Conform normativului, unitatea are un normat de 697 posturi și propunere spre aprobare, pentru anul 2022 de 541 de posturi.

Fata de aprobatul de 541 posturi, în stat se regăsesc, în plus și cei 186 rezidenți alocați unității noastre de către Ministerul Sănătății pe locuri de rezidențiat, care nu afectează posturile unității fiind plătiți de la Bugetul de stat-Capitolul transferuri –rezidenți.

La Tesa normarea s-a calculat conform Anexei nr.9 punctul 3 unități între 301 și 500 de paturi, lună de lună în calcul normarea la 410 paturi spitalizare continuă.

Se vor efectua următoarele modificări :

MODIFICARI DE PERSONAL :

Se înființează următoarele posturi :

- 1 post de medic specialist neurologie (poz.314 stat funcții)
- 1 post de medic specialist diabet zaharat, nutriție și boli metabolice (poz. 315 stat funcții)

În toată perioada pandemiei de SARS COV 2 am acordat servicii medicale unui număr de 10.218 pacienți COVID 19. Dintre aceștia la mai mult de o treime, medicii curanți au solicitat consulturi interclinice de Diabet zaharat, nutriție și boli metabolice și consulturi interclinice neurologice. Consulturile s-au desfășurat cu mare greutate, pacienții fiind greu deplasabili datorită patologiei respiratorii (saturații oscilante) , consulturile fiind în imposibilitatea de a fi realizate în timp util.

Mai mult la nivelul unității noastre, între anii 2019-2021, a fost o creștere dinamică a pacienților internați care au avut nevoie de consulturi interclinice, consulturi greu de realizat în alte unități sanitare(greu deplasabili, scheme de tratament de urmărit în dinamică, unități închise temporar COVID 19 etc).

Astfel in anii :

- 2019 dintr-un numar de 11270 internari, un numar de 3020 pacienti au fost consultati neurologic si 4032 au avut nevoie de consult Diabet zaharat, nutrititie si boli metabolice;
- 2020 dintr-un numar de 8036 internari, un numar de 2010 pacienti au fost consultati neurologic si 2900 au avut nevoie de consult Diabet zaharat, nutrititie si boli metabolice ;
- 2021 dintr-un numar de 5740 internari, un numar de 1920 pacienti au fost consultati neurologic si 2250 au avut nevoie de consult Diabet zaharat, nutrititie si boli metabolice ;

De asemenea la nivelul unitatii functioneaza o Sectie de zi imunodeficienti, unde se adreseaza pacientii din intreaga regiune Oltenia (Dolj, Olt, Gorj, Mehedinti) si unde din numarul total de pacienti au avut nevoie de consulturi astfel:

- 2019 dintr-un numar de 3562 internari, un numar de 1114 pacienti au fost consultati neurologic si 970 au avut nevoie de consult Diabet zaharat, nutrititie si boli metabolice ;
- 2020 dintr-un numar de 3090 internari, un numar de 840 pacienti au fost consultati neurologic si 915 au avut nevoie de consult Diabet zaharat, nutrititie si boli metabolice .
- 2021 dintr-un numar de 3724 internari, un numar de 965 pacienti au fost consultati neurologic si 1150 au avut nevoie de consult Diabet zaharat, nutrititie si boli metabolice ;

Pentru pacientii mai sus mentionati, internati in sectia de zi imunodeficienti, intampinam probleme la efectuarea consulturilor interclinice, acestia dorind sa nu expuna in alte unitati spitalicesti .

Cabinetele mai sus mentionate, vor functiona in cadrul spitalului, in locatii disponibile, cu circuite functionale separate .

Modificari de structura :

In baza Dispozitiei nr.113/03.06.2022 se infiinteaza in cadrul spitalului (Alte structuri functionale) :

- Cabinet medical de specialitate – neurologie
- Cabinet medical de specialitate – diabet zaharat, nutritie si boli metabolice;

Diverse :

- S-a dat o noua numerotare statului de functii ;

Manager

Sef Lucrari Dr.Turcu Andreea Adina

Director Medical

Dr.Nicolosu Dragos

Director Financiar-Contabil

Ec.Vasiluta Cosmin

Director de Ingrijiri Medicale

As.Med.Pr.Poenaru Luminita

Sef Serviciu Resurse Umane

Cj Buliteanu Veronica

**ORGANIGRAMA SPITALULUI CLINIC DE BOLI INFECȚIOASE
 ȘI PNEUMFTIZIOLOGIE „VICTOR BABEȘ” CRAIOVA PENTRU ANUL 2022**

